

CITY OF PRINCE GEORGE  
BYLAW NO. 8937

**A Bylaw of the City of Prince George to permanently close a portion of road located near 4<sup>th</sup> Avenue to remove its highway dedication for the purpose of future disposal of the lands.**

**WHEREAS** the Council of the City of Prince George deems it desirable that an approximate 139.5 square metres (.034 acres) of road dedicated on Plan 1268 be closed to traffic, and that the highway dedication thereof be removed;

**AND WHEREAS**, in accordance with section 40 of the *Community Charter*, notice of intention to adopt this bylaw has been delivered, posted and published, and an opportunity has been provided for persons who consider they are affected by this bylaw to make representations to Council;

**NOW THEREFORE** the Council of the City of Prince George, in open meeting assembled, **ENACTS AS FOLLOWS:**

1. That the portion of highway dedicated on Plan 1268, District Lot 343, Cariboo District as shown outlined in bold black on the Proposed Road Closure drawing attached hereto as Appendix "A" and forming part of this Bylaw, is closed to traffic.
2. That the dedication of the portion of highway dedicated by Plan 1268, District Lot 343, Cariboo District, as shown outlined in bold black on the Proposed Road Closure drawing, attached hereto as Appendix "A" and forming part of this Bylaw, is removed.
3. The Mayor and Corporate Officer are hereby empowered to do all things necessary to give effect to this Bylaw.
4. This Bylaw shall come into full force and take effect upon its adoption and shall be filed with the Registrar of the applicable Land Title Office.
5. This Bylaw may be cited for all purposes as "4th Avenue Road Closure Bylaw No. 8937, 2018".

READ A FIRST TIME THIS 28<sup>TH</sup> DAY OF MAY , 2018.

READ A SECOND TIME THIS 28<sup>TH</sup> DAY OF MAY , 2018.

First two readings passed by a unanimous decision of Members of City Council present and eligible to vote.

READ A THIRD TIME THIS 25<sup>TH</sup> DAY OF JUNE , 2018.

Third reading passed by a decision of Members of City Council present and eligible to vote.

Certified correct as passed third reading, this 27<sup>TH</sup> day of JUNE , 2018.

  
CORPORATE OFFICER OF  
THE CITY OF PRINCE GEORGE

APPROVED BY THE MINISTER OF TRANSPORTATION AND INFRASTRUCTURE PURSUANT TO THE PROVISIONS OF SECTION 41(3) OF THE COMMUNITY CHARTER THIS 11<sup>th</sup> DAY OF July , 2018.

  
for MINISTER OF TRANSPORTATION  
AND INFRASTRUCTURE

ADOPTED THIS 30<sup>th</sup> DAY OF JULY , 2018,  
BY A UNANIMOUS DECISION OF ALL MEMBERS OF CITY COUNCIL PRESENT AND ELIGIBLE TO VOTE.

  
MAYOR

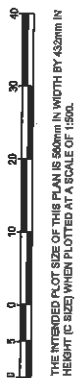
  
CORPORATE OFFICER

PLAN EPP81512

**REFERENCE PLAN TO ACCOMPANY BY-LAW No. 8937 (PRINCE GEORGE) CLOSING OF LANE BETWEEN AMENDED LOT 9 (66913M) AND LOT 10, PLAN 1268; AND AMENDED LOT 12 (66913M) AND LOT 11, PLAN 1268; ALL WITHIN BLOCK 146, AS SHOWN DEDICATED ON PLAN 1268, DISTRICT LOT 343, CARIBOO DISTRICT.**

PURSUANT TO SECTION 120 OF THE LAND TITLE ACT AND SECTION 40 OF THE COMMUNITY CHARTER.

INTEGRATED SURVEY AREA No. 39 PRINCE GEORGE, BC, NAD83 (CSRS) 4,0,0,BC.1  
BCGS 93G.097



ALL DISTANCES ARE IN METERS AND DECIMALS THEREOF.  
GRID BEARINGS ARE DERIVED FROM OBSERVATIONS BETWEEN GEODETIC CONTROL MONUMENTS 84H1289 AND 84H1320.  
THE UTM COORDINATES AND ESTIMATED HORIZONTAL POSITIONAL ACCURACIES HAVE BEEN DETERMINED FROM THE MEASURED COORDINATES AND STANDARD DEVIATIONS FOR GEODETIC CONTROL MONUMENTS 84H1289 AND 84H1320.

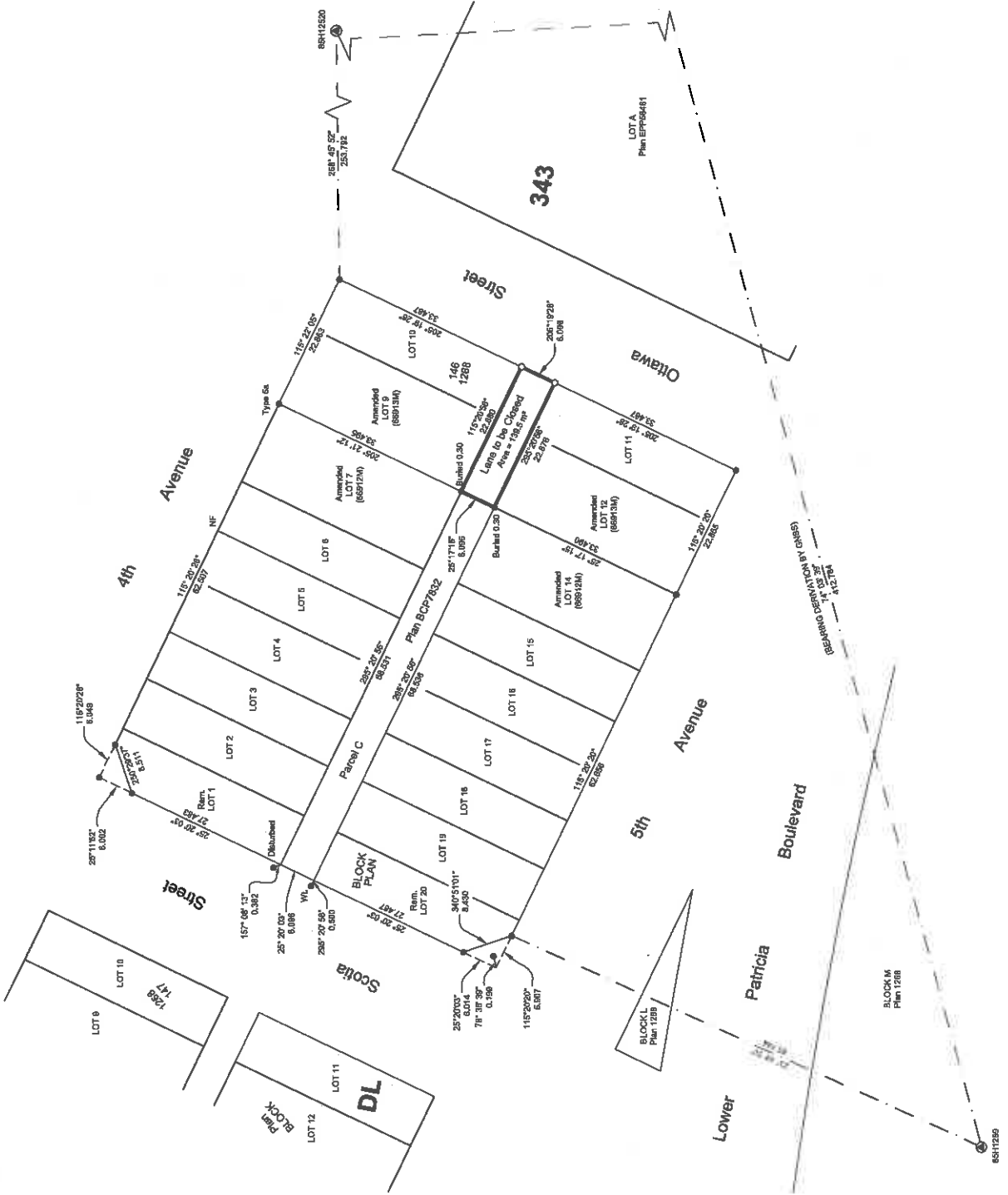
THIS PLAN SHOWS HORIZONTAL GROUND LEVEL DISTANCES UNLESS OTHERWISE SPECIFIED. TO COMPUTE GRID DISTANCES, MULTIPLY GROUND-LEVEL DISTANCES BY THE AVERAGE COMBINED FACTOR OF 0.998552 WHICH HAS BEEN DERIVED FROM CONTROL MONUMENT 84H1289.

NOTE: THIS PLAN SHOWS ONE OR MORE WITNESS POSTS WHICH ARE NOT SET ON THE TRUE CORNERS. SOME POSTS ARE ENLARGED FOR CLARITY.

**LEGEND**

- SYMBOLS FOUND PLACED
- DESCRIPTION
- CONTROL MONUMENT
- STANDARD IRON POST
- COMBINED SCALE FACTOR
- ESTIMATED HORIZONTAL POSITIONAL ACCURACY

UTM COORDINATES, ZONE 10, NAD 83 (CSRS), 4,0,0,BC.1			
STATION	NORTHING	EASTING	CSF
84H1289	5973816.78	517117.25	0.998552
84H1320	5973832.03	517813.97	0.998552



CHD FILE NO.: RES 1572

THE FIELD SURVEY REPRESENTED BY THIS PLAN WAS COMPLETED ON THE 9TH DAY OF MARCH, 2016

ALBERT HOEHLER, BOLS 874

THIS PLAN LIES WITHIN THE REGIONAL DISTRICT OF FRASER-FORT GEORGE.

FILE: 18T12-RC  
KUMBLE LAND SURVEYING INC.  
1388 LYON STREET SOUTH  
PRINCE GEORGE, BC V2N 1T3  
TEL: (250) 514-9703