

CITY OF PRINCE GEORGE
BYLAW NO. 9056, 2019

A Bylaw of the City of Prince George to permanently close a portion of road located near 1357 PG Pulpmill Road to remove its highway dedication for the purpose of future disposal of the lands.

WHEREAS the Council of the City of Prince George deems it desirable that an approximate 0.50 hectares of road dedicated on Plan 14534, District Lot 823, Cariboo District, as shown on Reference Plan EPP95003, be closed to traffic, and that the highway dedication thereof be removed;

AND WHEREAS, in accordance with section 40 of the *Community Charter*, notice of intention to adopt this bylaw has been delivered, posted and published, and an opportunity has been provided for persons who consider they are affected by this bylaw to make representations to Council;

NOW THEREFORE the Council of the City of Prince George, in open meeting assembled, **ENACTS AS FOLLOWS:**

1. That the portion of road shown dedicated on Plan 14534, District Lot 823, Cariboo District, as shown outlined in bold black on Reference Plan EPP95003, attached hereto as Appendix "A" and forming part of this Bylaw, is closed to traffic.
2. That the dedication of the portion of road dedicated by Plan 14534, District Lot 823, Cariboo District, as shown outlined in bold black on Reference Plan EPP95003, attached hereto as Appendix "A" and forming part of this Bylaw, is removed.
3. The Mayor and Corporate Officer are hereby empowered to do all things necessary to give effect to this Bylaw.
4. This Bylaw shall come into full force and take effect upon its adoption and shall be filed with the Registrar of the applicable Land Title Office.
5. This Bylaw may be cited for all purposes as "City of Prince George 1357 PG Pulpmill Road, Road Closure Bylaw No. 9056, 2019".

READ A FIRST TIME THIS **23RD** DAY OF **OCTOBER** , 2019.

READ A SECOND TIME THIS **23RD** DAY OF **OCTOBER** , 2019.

First two readings passed by a **UNANIMOUS** decision of Members of City Council present and eligible to vote.

READ A THIRD TIME THIS **18TH** DAY OF **NOVEMBER** , 2019.

Third reading passed by a **UNANIMOUS** decision of Members of City Council present and eligible to vote.

ADOPTED THIS **4th** DAY OF **DECEMBER** , 2019, BY A **UNANIMOUS**
DECISION OF ALL MEMBERS OF CITY COUNCIL PRESENT AND ELIGIBLE TO VOTE.



MAYOR



CORPORATE OFFICER

**REFERENCE PLAN TO ACCOMPANY BY-LAW NUMBER 9056 (PRINCE GEORGE)
TO CLOSE A PORTION OF ROAD SHOWN DEDICATED ON PLAN 14534,
DISTRICT LOT 823, CARIBOO DISTRICT.**

PLAN EPP95003

PURSUANT TO SECTION 120 OF THE LAND TITLE ACT AND SECTION 40 OF THE COMMUNITY CHARTER

THIS PLAN LIES WITHIN INTEGRATED SURVEY AREA
No. 39 PRINCE GEORGE, BC, NAD83 (CSRS) 4.0.0.BC.1
BOGS 933.087



THE INTENDED PLOT SIZE OF THIS PLAN IS 600mm IN WIDTH BY 432mm IN HEIGHT (C SIZE) WHEN PLOTTED AT A SCALE OF 1:1250.

ALL DISTANCES ARE IN METRES AND DECIMALS THEREOF.

GRID BEARINGS ARE DERIVED FROM OBSERVATIONS TO GEODETIC CONTROL MONUMENTS 8911698 AND 8911691.

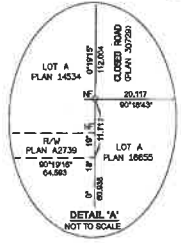
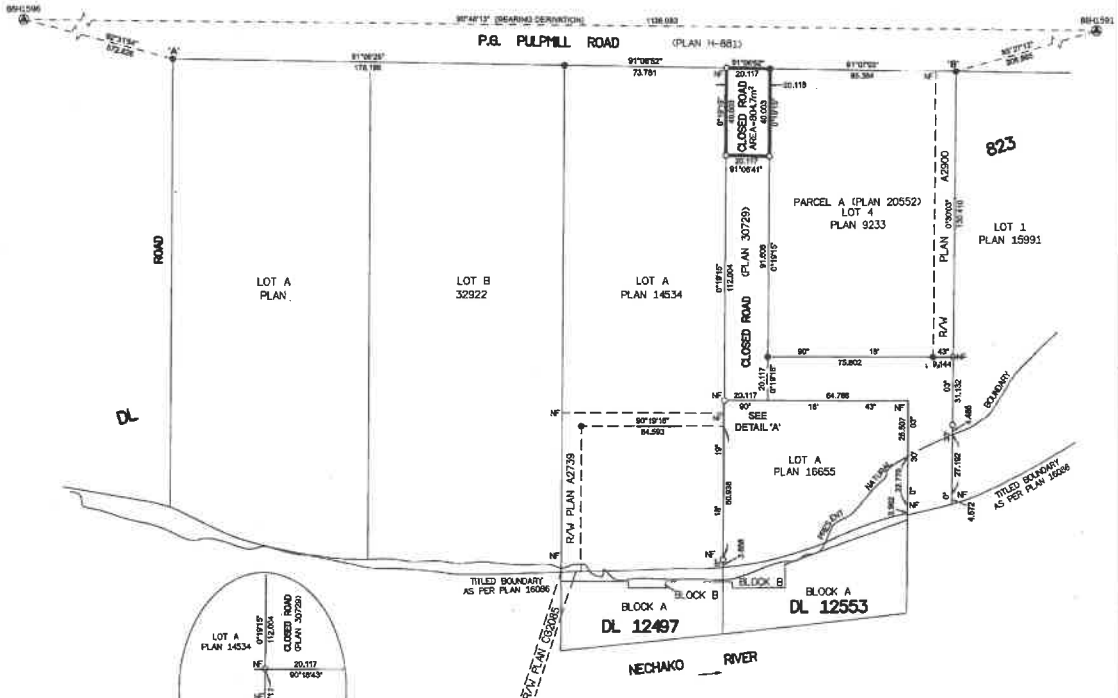
THE UTM COORDINATES AND ESTIMATED ABSOLUTE ACCURACY ACHIEVED HAVE BEEN DERIVED FROM BARCOT PUBLISHED COORDINATES AND STANDARD DEVIATIONS FOR GEODETIC CONTROL MONUMENT 8911691.

THIS PLAN SHOWS HORIZONTAL GROUND LEVEL DISTANCES UNLESS OTHERWISE SPECIFIED. TO COMPUTE GRID DISTANCES, MATRIPLY GROUND-LEVEL DISTANCES BY THE COMBINED FACTOR OF 0.9999188 WHICH HAS BEEN DERIVED FROM GEODETIC CONTROL MONUMENT 8911691.

LEGEND

| SYMBOLS | DESCRIPTION |
|--------------|-----------------------------|
| FOUND PLACED | |
| ⊙ | CONTROL MONUMENT |
| ● | STANDARD IRON POST |
| CBF | COMBINED SCALE FACTOR |
| EAA | ESTIMATED ABSOLUTE ACCURACY |

| GEO-REFERENCING POSITIONS | | | | |
|---|------------|-----------|------|-----------|
| UTM COORDINATES, ZONE 10, NAD 83 (CSRS), 4.0.0.BC.1 | | | | |
| STATION | NORTHING | EASTING | EAA | CBF |
| Fg. IP 'K' | 6876712.46 | 517378.11 | 0.10 | 0.9999181 |
| Fg. IP 'W' | 6876706.44 | 617736.33 | 0.10 | 0.9999188 |



THE FIELD SURVEY REPRESENTED BY THIS PLAN WAS COMPLETED
ON THE 19th DAY OF AUGUST, 2019
SHARINA C. GOERTZEN, BCI 6798

THIS PLAN LIES WITHIN THE REGIONAL DISTRICT OF FRASER-FORT GEORGE.

McElhanney
McELHANNHEY ASSOCIATES
LAND SURVEYING LTD.
Suite 12
850 North Macleod Road
Prince George BC
Canada V2C 1A1
781.250.661/2229
File No. 2341-6714-RC