

CITY OF PRINCE GEORGE
BYLAW NO. 8849

A Bylaw of the City of Prince George to permanently close a portion of road located adjacent to Giscome Road and to remove its highway dedication for the purpose of future disposal of lands.

WHEREAS the Council of the City of Prince George deems it desirable that an approximate 0.15 acres (597.4 metres squared (m²)) of road dedicated on Plan 24137, District Lot 633, Cariboo District be closed to traffic, and that the highway dedication thereof be removed;

AND WHEREAS, in accordance with section 40 of the *Community Charter*, notice of intention to adopt this bylaw has been delivered, posted and published, and an opportunity has been provided for persons who consider they are affected by this bylaw to make representations to Council;

NOW THEREFORE the Council of the City of Prince George, in open meeting assembled, **ENACTS AS FOLLOWS:**

1. That the portion of highway dedicated on Plan 24137, District Lot 633, Cariboo District, as shown outlined in bold black on Appendix "A", attached to and forming part of this Bylaw, is closed.
2. That the dedication of the portion of highway dedicated by Plan 24137, District Lot 633, Cariboo District, as shown outlined in bold black on Appendix "A", attached to and forming part of this Bylaw, is removed.
3. The Mayor and Corporate Officer are hereby empowered to do all things necessary to give effect to this Bylaw.
4. This Bylaw shall come into full force and take effect upon its adoption and shall be filed with the Registrar of the applicable Land Title Office.
5. This Bylaw may be cited for all purposes as "Giscome Road Closure Bylaw No. 8849, 2017".

READ A FIRST TIME THIS 4th DAY OF DECEMBER , 2017.

READ A SECOND TIME THIS 4th DAY OF DECEMBER , 2017.

First two readings passed by a UNANIMOUS decision of Members of City Council present and eligible to vote.

READ A THIRD TIME THIS 18th DAY OF DECEMBER , 2017.

Third reading passed by a UNANIMOUS decision of Members of City Council present and eligible to vote.

Certified correct as passed third reading, this 19th day of December , 2017.

W. B. Q.

CORPORATE OFFICER OF THE CITY OF PRINCE GEORGE

ADOPTED THIS 8th BY A UNANIMOUS AND ELIGIBLE TO VOTE.

DAY OF JANUARY , 2018, DECISION OF ALL MEMBERS OF CITY COUNCIL PRESENT

[Signature]

MAYOR

W. B. Q.

CORPORATE OFFICER

**REFERENCE PLAN TO ACCOMPANY ROAD CLOSURE,
BY-LAW No. 8849 (PRINCE GEORGE), TO CLOSE ROAD
DEDICATED ON PLAN 24137, DISTRICT LOT 633,
CARIBOO DISTRICT.**

PLAN EPP77158

PURSUANT TO SECTION 120 OF THE LAND TITLE ACT AND SECTION 40
OF THE COMMUNITY CHARTER.

INTEGRATED SURVEY AREA No. 39 PRINCE GEORGE, BC, NAD83 (CSRS) 4.0.0.BC.1

BCGS 93G.087



THE INTENDED PLOT SIZE OF THIS PLAN IS 560mm IN WIDTH BY 432mm IN
HEIGHT (C SIZE) WHEN PLOTTED AT A SCALE OF 1:200.

ALL DISTANCES ARE IN METRES AND DECIMALS THEREOF.

GRID BEARINGS ARE DERIVED FROM OBSERVATIONS BETWEEN GEODETIC
CONTROL MONUMENTS 85H1279 AND 85H1834.

THE UTM COORDINATES AND ESTIMATED HORIZONTAL POSITIONAL
ACCURACY ACHIEVED HAVE BEEN DERIVED FROM MASCOT PUBLISHED
COORDINATES AND STANDARD DEVIATIONS FOR GEODETIC CONTROL
MONUMENT 85H1279.

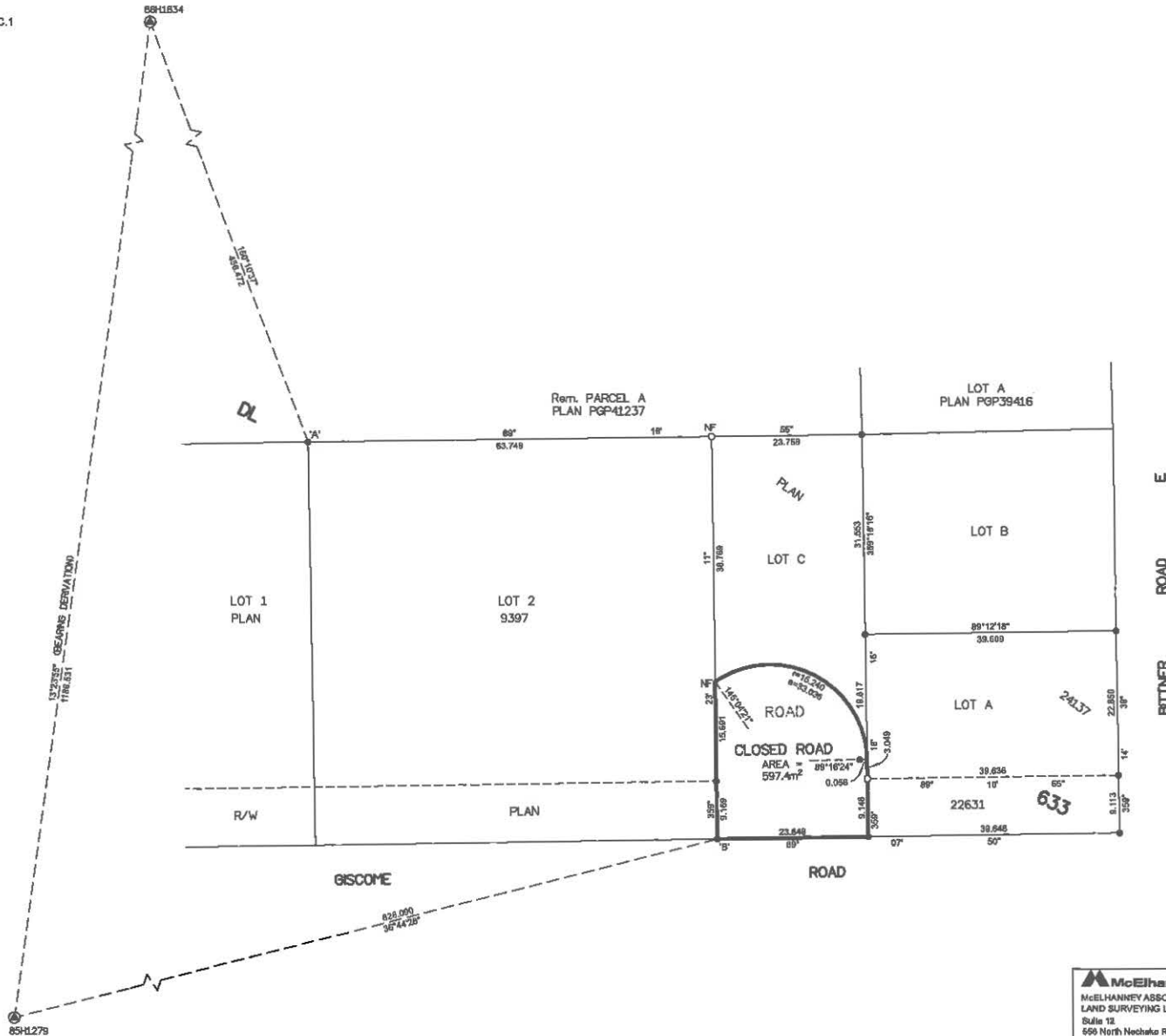
THIS PLAN SHOWS HORIZONTAL GROUND-LEVEL DISTANCES UNLESS
OTHERWISE SPECIFIED. TO COMPUTE GRID DISTANCES, MULTIPLY
GROUND-LEVEL DISTANCES BY THE AVERAGE COMBINED FACTOR OF
0.9995027 WHICH HAS BEEN DERIVED FROM CONTROL MONUMENTS 85H1279
AND 85H1834.

NOTE:
SOME POSTS ARE EXAGGERATED FOR CLARITY.

LEGEND

SYMBOLS	DESCRIPTION
FOUND PLACED	
⊙	CONTROL MONUMENT
●	STANDARD IRON POST
○	COMBINED SCALE FACTOR
EHPA	ESTIMATED HORIZONTAL POSITIONAL ACCURACY

GEOREFERENCING POSITIONS UTM COORDINATES, ZONE 10, NAD 83 (CSRS), 4.0.0.BC.1				
STATION	NORTHING	EASTING	EHPA	CSF
FILE IP 'A'	8972384.28	524019.81	0.12	0.9995027
FILE IP 'B'	8972291.48	524084.00	0.12	0.9995027



THE ASSOCIATION OF BC LAND SURVEYORS HAS GRANTED RELIEF FROM
COMPLIANCE WITH GSI RULE 5-4(2) FOR THIS SURVEY SINCE THE STANDARD
DEVIATIONS OF THE ISA MONUMENTS DO NOT MEET THE REQUIREMENTS OF
SAID RULE.

THE FIELD SURVEY REPRESENTED BY THIS PLAN WAS COMPLETED
ON THE 10th DAY OF OCTOBER, 2017
SHALINA C. COERTZEN, BCLS 798

THIS PLAN LIES WITHIN THE REGIONAL DISTRICT OF FRASER-FORT GEORGE.

McElhanney
McELHANNEY ASSOCIATES
LAND SURVEYING LTD.
Suite 12
550 North Nechako Road
Prince George BC
Canada V2K 1A1
Tel 250 861 2229
File No. 2341-8818-RC

APPENDIX "A" to Bylaw No. 8849