

CITY OF PRINCE GEORGE
BYLAW NO. 8694

A City of Prince George Bylaw to permanently close a portion of lane adjacent to City Land at 693 4th Avenue and to remove its highway dedication for the purpose of future disposal of the lands.

WHEREAS pursuant to Section 40 of the *Community Charter* S.B.C. 2003, c. 26, Council may by bylaw close a portion of a highway to traffic and remove its highway dedication;

AND WHEREAS, in accordance with section 40 of the *Community Charter*, notice of intention to adopt this bylaw has been delivered, posted and published, and an opportunity has been provided for persons who consider they are affected by this bylaw to make representations to Council;

NOW THEREFORE the Council of the City of Prince George, in open meeting assembled, **ENACTS AS FOLLOWS:**

1. That the portion of highway shown as lane on Plan 1268, outlined in bold black on the reduced copy of "Reference Plan to Accompany Bylaw No. 8694 Closing Part of Lane Adjacent to Lots 1 to 5, Inclusive, Lots 16 to 20, Inclusive, Block 145, District Lot 343, Cariboo District, Plan 1268", referred to as Schedule "A", attached to and forming part of this bylaw, is hereby closed to traffic.
2. That the highway dedication of the portion of highway shown as lane on Plan 1268, District Lot 343, outlined in bold black on the reduced copy of "Reference Plan to Accompany Bylaw No. 8694 Closing Part of Lane Adjacent to Lots 1 to 5, Inclusive, Lots 16 to 20, Inclusive, Block 145, District Lot 343, Cariboo District, Plan 1268", referred to as Schedule "A", attached to and forming part of this bylaw, is hereby removed.
3. The Mayor and Clerk are hereby empowered to do all things necessary to give effect to this Bylaw.
4. This bylaw shall come into full force and take effect upon its adoption and shall be filed with the Registrar of the applicable Land Title Office.
5. This bylaw may be cited for all purposes as "4th Avenue Lane Closure and Removal of Highway Dedication Bylaw No. 8694, 2015".

READ A FIRST TIME THIS 30th DAY OF NOVEMBER , 2015.

READ A SECOND TIME THIS 30th DAY OF NOVEMBER , 2015.

First two readings passed by a **unanimous** decision of Members of City Council present and eligible to vote.

READ A THIRD TIME THIS **14th** DAY OF **DECEMBER**, 2015.

Third reading passed by a **unanimous** decision of Members of City Council present and eligible to vote.

Certified correct as passed third reading, this **15th** day of **December**, 2015.

M. Connelly.
D/CORPORATE OFFICER OF
THE CITY OF PRINCE GEORGE

APPROVED BY THE MINISTER OF TRANSPORTATION AND INFRASTRUCTURE PURSUANT TO THE PROVISIONS OF SECTION 41(3) OF THE COMMUNITY CHARTER THIS **16th** DAY OF **December**, 2015

Kali Haham.
for MINISTER OF TRANSPORTATION
AND INFRASTRUCTURE

ADOPTED THIS **18th** DAY OF **JANUARY**, 2016,
BY A **UNANIMOUS** DECISION OF ALL MEMBERS OF CITY COUNCIL PRESENT AND ELIGIBLE TO VOTE.

[Signature]
MAYOR

[Signature]
CORPORATE OFFICER

**REFERENCE PLAN TO ACCOMPANY
CITY OF PRINCE GEORGE BYLAW No. 8694
CLOSING PART OF LANE ADJACENT TO LOTS 1 TO 5,
INCLUSIVE, LOTS 16 TO 20, INCLUSIVE, BLOCK 145,
DISTRICT LOT 343, CARIBOO DISTRICT, PLAN 1268.**

PURSUANT TO SECTION 120 OF THE LAND TITLE ACT
AND SECTION 40 OF THE COMMUNITY CHARTER.

BCGS 936.097

INTEGRATED SURVEY AREA No. 39, PRINCE GEORGE, M40B3 (CSRS)

THE INTENDED PLOT SIZE OF THIS PLAN IS 432mm IN WIDTH BY
560mm IN HEIGHT (O SIZE) WHEN PLOTTED AT A SCALE OF 1:1000



ALL DISTANCES ARE HORIZONTAL GROUND-LEVEL AND ARE SHOWN
IN METRES AND DECIMALS THEREOF, UNLESS OTHERWISE INDICATED.

GRID BEARINGS ARE DERIVED FROM OBSERVATIONS BETWEEN
GEODETIC CONTROL MONUMENTS BSH1091 AND BSH12520.

THIS PLAN SHOWS HORIZONTAL GROUND-LEVEL DISTANCES, UNLESS
OTHERWISE SPECIFIED. TO COMPUTE GRID DISTANCES, MULTIPLY
GROUND-LEVEL DISTANCES BY THE AVERAGE CORRECTION FACTOR OF
0.9992168 WHICH HAS BEEN DERIVED FROM GEODETIC CONTROL
MONUMENTS BSH1091 AND BSH12520.

THE UTM COORDINATES AND ESTIMATED NETWORK HORIZONTAL POSITIONAL
ACCURACY ACHIEVED ARE DERIVED FROM GEODETIC CONTROL MONUMENT
BSH12520.

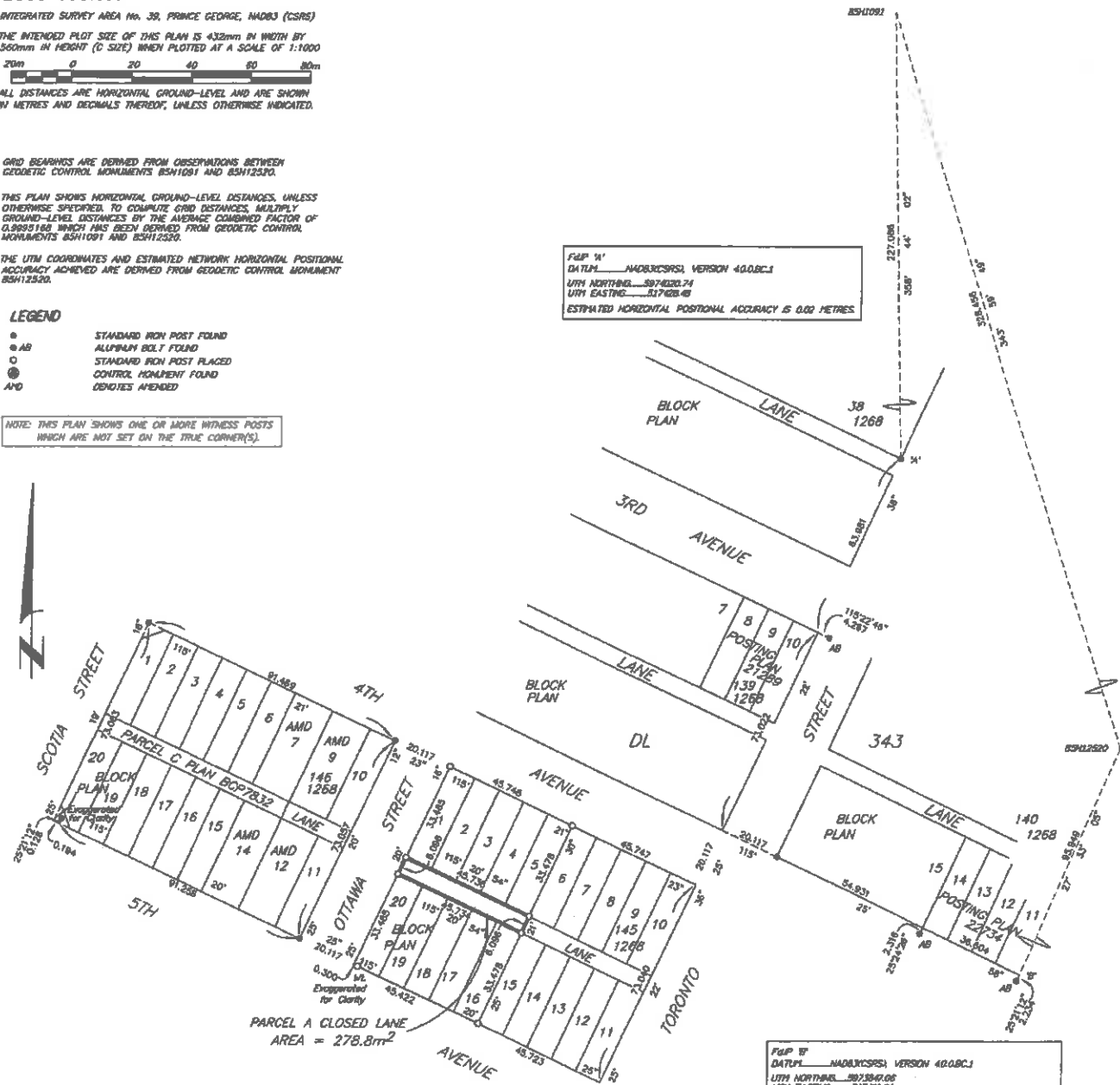
LEGEND

- STANDARD IRON POST FOUND
- AB ALUMINUM BOLT FOUND
- STANDARD IRON POST PLACED
- CONTROL MONUMENT FOUND
- AND DENOTES ADJACENT

NOTE: THIS PLAN SHOWS ONE OR MORE WITNESS POSTS
WHICH ARE NOT SET ON THE TRUE CORNER(S).

F&P '1'
DATUM: NAD83(CSRS), VERSION 4.0(B.C.)
UTM NORTHING: 5974020.74
UTM EASTING: 517408.48
ESTIMATED HORIZONTAL POSITIONAL ACCURACY IS 0.02 METRES.

F&P 'B'
DATUM: NAD83(CSRS), VERSION 4.0(B.C.)
UTM NORTHING: 5973941.06
UTM EASTING: 517408.81
ESTIMATED HORIZONTAL POSITIONAL ACCURACY IS 0.02 METRES.



PARCEL A CLOSED LANE
AREA = 278.8m²

THE FIELD SURVEY REPRESENTED BY THIS PLAN
WAS COMPLETED ON THE 15th DAY OF OCTOBER, 2015.
SHAMM GOERTZEN, BCLS 798

THIS PLAN LIES WITHIN THE REGIONAL DISTRICT OF FRASER - FORT GEORGE.

McShannay
McShannay Associates
Lead Surveying Ltd.
Prince George, B.C.
E-mail: pgma@mcshannay.com
Ph: (250) 561-2229