

CITY OF PRINCE GEORGE
BYLAW NO. 8762

A Bylaw of the City of Prince George to permanently close a portion of road at 1780 Boundary Road and to remove its highway dedication for the purpose of future disposal of the lands.

WHEREAS the Council of the City of Prince George deems it desirable that an approximate 0.062 hectares of road dedicated on Plan 902, District Lot 629, Cariboo District be closed to traffic, and that the highway dedication thereof be removed;

AND WHEREAS, in accordance with section 40 of the *Community Charter*, notice of intention to adopt this bylaw has been delivered, posted and published, and an opportunity has been provided for persons who consider they are affected by this bylaw to make representation to Council;

NOW THEREFORE the Council of the City of Prince George, in open meeting assembled, **ENACTS AS FOLLOWS:**

1. That the portion of highway dedicated on Plan 902, District Lot 629, Cariboo District, as shown outlined in bold black on the Reference Plan attached hereto as Appendix "A" and forming part of this Bylaw, is closed to traffic.
2. That the dedication of the portion of highway dedicated by Plan 902, District Lot 629, Cariboo District, as shown outlined in bold black on the Reference Plan attached hereto as Appendix "A" and forming part of this Bylaw, is removed.
3. The Mayor and Corporate Officer are hereby empowered to do all things necessary to give effect to this Bylaw.
4. This Bylaw shall come into full force and take effect upon its adoption and shall be filed with the Registrar of the applicable Land Title Office.
5. This Bylaw may be cited for all purposes as "1780 Boundary Road Closure Bylaw No. 8762, 2016".

READ A FIRST TIME THIS 17th DAY OF OCTOBER , 2016.

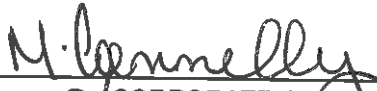
READ A SECOND TIME THIS 17th DAY OF OCTOBER , 2016.

First two readings passed by a **UNANIMOUS** decision of Members of City Council
present and eligible to vote.

READ A THIRD TIME THIS 9th DAY OF NOVEMBER, 2016.

Third reading passed by a UNANIMOUS decision of Members of City Council present and eligible to vote.

Certified correct as passed third reading, this 14th day of November, 2016.


D/CORPORATE OFFICER OF
THE CITY OF PRINCE GEORGE

APPROVED BY THE MINISTER OF TRANSPORTATION AND INFRASTRUCTURE PURSUANT TO THE PROVISIONS OF SECTION 41(3) OF THE COMMUNITY CHARTER THIS 9th DAY OF December, 2016.


FOR MINISTER OF TRANSPORTATION
AND INFRASTRUCTURE

ADOPTED THIS 19th DAY OF DECEMBER, 2016,
BY A UNANIMOUS DECISION OF ALL MEMBERS OF CITY COUNCIL PRESENT AND
ELIGIBLE TO VOTE.


MAYOR


CORPORATE OFFICER

REFERENCE PLAN TO ACCOMPANY BYLAW No. 8762 (PRINCE GEORGE) CLOSING A PORTION OF ROAD SHOWN DEDICATED ON PLAN 902, DISTRICT LOT 629, CARIBOO DISTRICT.

PURSUANT TO SECTION 120 OF THE LAND TITLE ACT AND SECTION 40 OF THE COMMUNITY CHARTER.

INTEGRATED SURVEY AREA No. 39 PRINCE GEORGE, BC
BCGS 93G.097



THE INTENDED PLOT SIZE OF THIS PLAN IS 432 mm IN WIDTH BY 560 mm IN HEIGHT (C SIZE) WHEN PLOTTED AT A SCALE OF 1:800.
ALL DISTANCES ARE IN METRES AND DECIMALS THEREOF.

GRID BEARINGS ARE DERIVED FROM OBSERVATIONS BETWEEN GEODETIC CONTROL MONUMENTS 85H1287 AND 85H1287.

THE UTM COORDINATES AND ESTIMATED HORIZONTAL POSITIONAL ACCURACY ACHIEVED HAVE BEEN DERIVED FROM MASCOT PUBLISHED COORDINATES AND STANDARD DEVIATIONS FOR GEODETIC CONTROL MONUMENTS 85H1287 AND 85H1287.

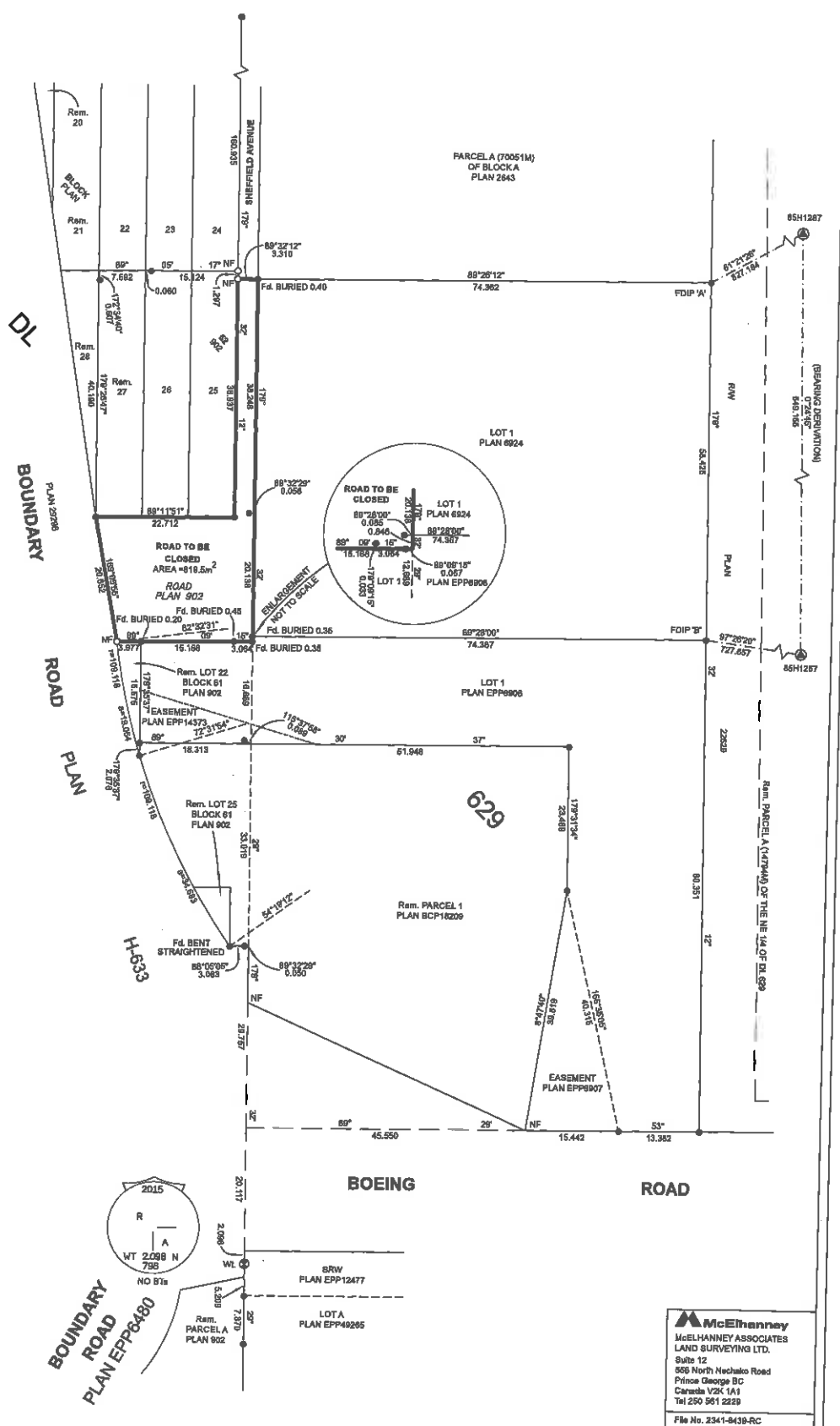
THIS PLAN SHOWS HORIZONTAL GROUND-LEVEL DISTANCES UNLESS OTHERWISE SPECIFIED. TO COMPUTE GRID DISTANCES, MULTIPLY GROUND-LEVEL DISTANCES BY THE AVERAGE COMBINED FACTOR OF 0.9995020 WHICH HAS BEEN DERIVED FROM CONTROL MONUMENT 85H1287.

NOTE:
THIS PLAN SHOWS ONE OR MORE WITNESS POSTS WHICH ARE NOT SET ON THE TRUE CORNER(S).
SOME POSTS ARE EXAGGERATED FOR CLARITY.

LEGEND

SYMBOLS FOUND	DESCRIPTION PLACED
⊙	CONTROL MONUMENT
⊕	STANDARD CAPPED POST
●	STANDARD IRON POST

GEOREFERENCING POSITIONS			
UTM COORDINATES, ZONE 19, NAD 83 (CSRS), 4.0.0.BC.1			
STATION	NORTHING	EASTING	ESTIMATED HORIZONTAL POSITIONAL ACCURACY
FDIP 'A'	8972804.11	521244.53	0.05
FDIP 'B'	8972745.72	521245.00	0.06



THE FIELD SURVEY REPRESENTED BY THIS PLAN WAS COMPLETED ON THE 2ND DAY OF AUGUST, 2015
DARREN KENT, BCLS 694

THIS PLAN LIES WITHIN THE REGIONAL DISTRICT OF FRASER-FORT GEORGE

McElhanney
McELHANNEY ASSOCIATES
LAND SURVEYING LTD.
Suite 12
855 North Nechako Road
Prince George BC
Canada V2K 1A1
Tel 250 561 2229
File No. 2341-843B-RC