

**CITY OF PRINCE GEORGE**  
**BYLAW NO. 8857**

**A Bylaw of the City of Prince George to permanently close a portion of road located adjacent to 1755 Foothills Boulevard and to remove its highway dedication for the purpose of future disposal of the lands.**

**WHEREAS** the Council of the City of Prince George deems it desirable that an approximate .357 hectares (.88 acre) of road dedicated on Plan 837, District Lot 2508, Cariboo District (Reference Plan EPP72102) be closed to traffic, and that the highway dedication thereof be removed;

**AND WHEREAS**, in accordance with section 40 of the *Community Charter*, notice of intention to adopt this bylaw has been delivered, posted and published, and an opportunity has been provided for persons who consider they are affected by this bylaw to make representations to Council;

**NOW THEREFORE** the Council of the City of Prince George, in open meeting assembled, **ENACTS AS FOLLOWS:**

1. That the portion of highway dedicated on Plan 837, District Lot 2508, Cariboo District, as shown outlined in bold black on the Reference Plan EPP72102 attached hereto as Appendix "A" and forming part of this Bylaw, is closed to traffic.
2. That the dedication of the portion of highway dedicated by Plan 837, District Lot 2508, Cariboo District, as shown outlined in bold black on the Reference Plan EPP72102, attached hereto as Appendix "A" and forming part of this Bylaw, is removed.
3. The Mayor and Corporate Officer are hereby empowered to do all things necessary to give effect to this Bylaw.
4. This Bylaw shall come into full force and take effect upon its adoption and shall be filed with the Registrar of the applicable Land Title Office.
5. This Bylaw may be cited for all purposes as "1755 Foothills Road Closure Bylaw No. 8857, 2017".

READ A FIRST TIME THIS 26<sup>th</sup> DAY OF JUNE , 2017.

READ A SECOND TIME THIS 26<sup>th</sup> DAY OF JUNE , 2017.

First two readings passed by a UNANIMOUS decision of Members of City Council present and eligible to vote.

READ A THIRD TIME THIS 24<sup>th</sup> DAY OF JULY , 2017.

Third reading passed by a UNANIMOUS decision of Members of City Council present and eligible to vote.

Certified correct as passed third reading, this 26<sup>th</sup> day of July , 2017.

  
CORPORATE OFFICER OF  
THE CITY OF PRINCE GEORGE

ADOPTED THIS 21<sup>st</sup> DAY OF AUGUST , 2017,  
BY A UNANIMOUS DECISION OF ALL MEMBERS OF CITY COUNCIL PRESENT AND  
ELIGIBLE TO VOTE.

  
MAYOR

  
CORPORATE OFFICER

**REFERENCE PLAN TO ACCOMPANY ROAD CLOSURE, BY-LAW No. 8857  
(PRINCE GEORGE), TO CLOSE ROAD DEDICATED ON PLAN 837,  
DISTRICT LOT 2508, CARIBOO DISTRICT.**

**PLAN EPP72102**

PURSUANT TO SECTION 120 OF THE LAND TITLE ACT AND SECTION 40 OF THE COMMUNITY CHARTER.

INTEGRATED SURVEY AREA No. 39 PRINCE GEORGE, BC, NAD83 (CRS) 4.0.0.BC.1  
BCOB 99G.068



THE INTENDED PLOT SIZE OF THIS PLAN IS 600m IN WIDTH BY 432m IN HEIGHT (C 622) WHEN PLOTTED AT A SCALE OF 1:750.

ALL DISTANCES ARE IN METRES AND DECIMALS THEREOF.

GRID BEARINGS ARE DERIVED FROM OBSERVATIONS BETWEEN GEODETIC CONTROL MONUMENTS 88H1310 AND 88H1208.

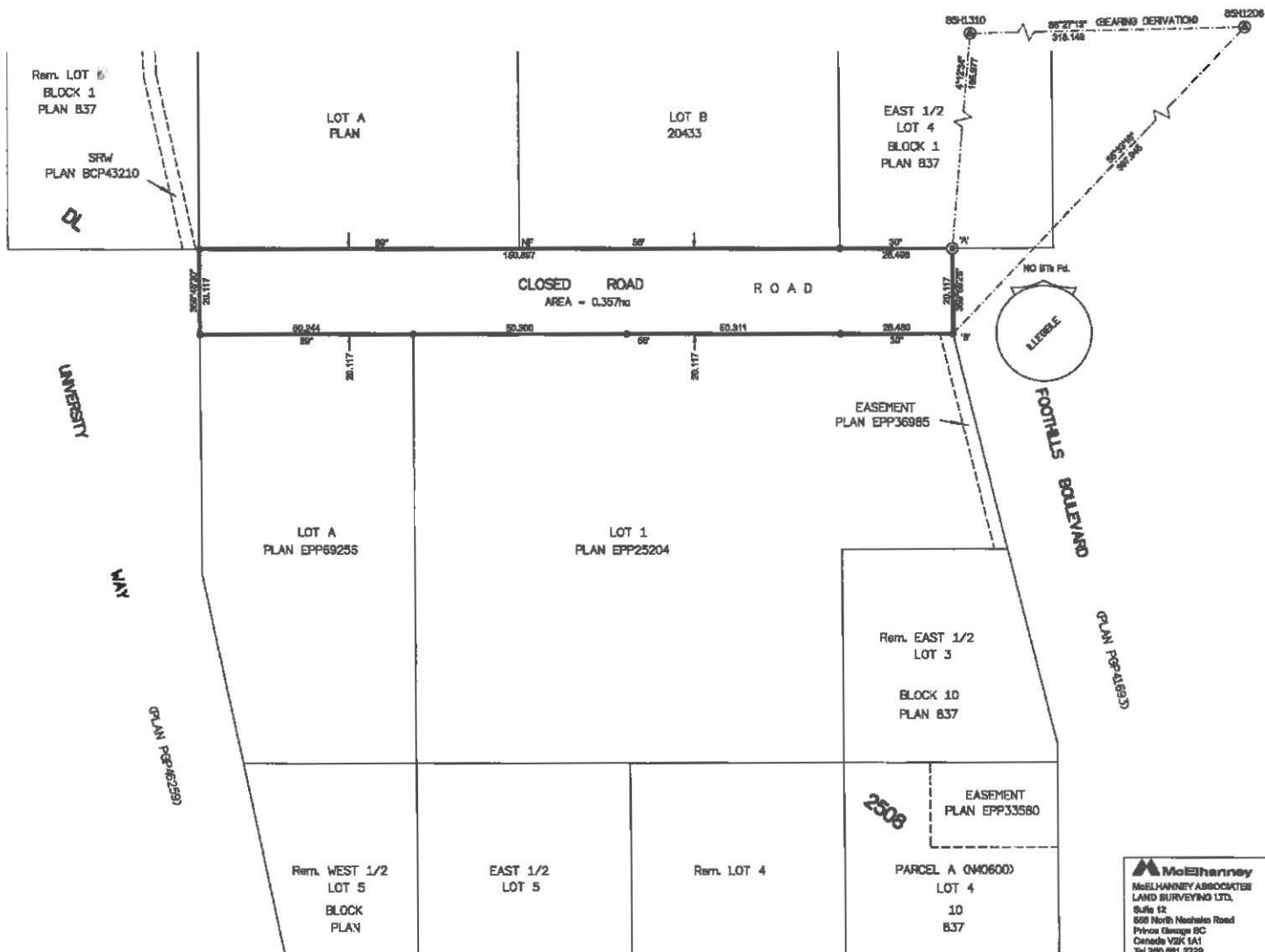
THE UTM COORDINATES AND ESTIMATED HORIZONTAL POSITIONAL ACCURACY ACHIEVED HAVE BEEN DERIVED FROM MARCO PUBLISHED COORDINATES AND STANDARD DEVIATIONS FOR GEODETIC CONTROL MONUMENT 88H1310.

THIS PLAN SHOWS HORIZONTAL GROUND-LEVEL DISTANCES UNLESS OTHERWISE SPECIFIED. TO COMPUTE GRID DISTANCES, MULTIPLY GROUND-LEVEL DISTANCES BY THE COMBINED FACTOR OF 0.9999928 WHICH HAS BEEN DERIVED FROM GEODETIC CONTROL MONUMENT 88H1310.

**LEGEND**

- |               |  |
|---------------|--|
| SYMBOLS FOUND | DESCRIPTION                              |
| ⊙             | CONTROL MONUMENT                         |
| ●             | STANDARD IRON POST                       |
| ⊙             | STANDARD CONCRETE POST                   |
| CSF           | COMBINED SCALE FACTOR                    |
| EHPA          | ESTIMATED HORIZONTAL POSITIONAL ACCURACY |

GEOREFERENCING POSITIONS UTM COORDINATES, ZONE 18, NAD 83 (CRS), 4.0.0.BC.1				
STATION	NORTHING	EASTING	EHPA	CSF
Fd. P.Con W	8973363.81	912358.87	0.10	0.9999928
Fd. P. W	8973948.40	912358.70	0.10	0.9999928



THE ASSOCIATION OF BC LAND SURVEYORS HAS GRANTED RELIEF FROM COMPLIANCE WITH BRN RULE 8-4(2) FOR THIS SURVEY SINCE THE STANDARD DEVIATIONS OF THE ISA MONUMENTS DO NOT MEET THE REQUIREMENTS OF SAID RULE.

THE FIELD SURVEY REPRESENTED BY THIS PLAN WAS COMPLETED ON THE 11TH DAY OF JANUARY, 2017  
SHARANA G. GOERTZEN, BCLS 798

THIS PLAN LIES WITHIN THE REGIONAL DISTRICT OF FRASER-FORT GEORGE.

**McElhanney**  
MCELHANNAY ASSOCIATES  
LAND SURVEYING LTD.  
Suite 12  
650 North Nechako Road  
Prince George BC  
Canada V2K 1A1  
Tel 250 691 2229  
File No. 2841-8852-RC

APPENDIX "A" to Bylaw No. 8857