

CITY OF PRINCE GEORGE
BYLAW NO. 9046, 2019

A Bylaw of the City of Prince George to permanently close a portion of road located adjacent to 2851 Gogolin Road to remove its highway dedication for the purpose of future disposal of the lands.

WHEREAS the Council of the City of Prince George deems it desirable that an approximate 106.3 square metre area of road shown on Reference Plan EPP93590 be closed to traffic, and that the highway dedication thereof be removed;

AND WHEREAS, in accordance with section 40 of the *Community Charter*, notice of intention to adopt this bylaw has been delivered, posted and published, and an opportunity has been provided for persons who consider they are affected by this bylaw to make representations to Council;

NOW THEREFORE the Council of the City of Prince George, in open meeting assembled, **ENACTS AS FOLLOWS:**

1. That the portion of highway shown outlined in bold black on Reference Plan EPP93590, attached hereto as Appendix "A" and forming part of this Bylaw, is closed to traffic.
2. That the dedication of the portion of highway shown outlined in bold black on Reference Plan EPP93590, attached hereto as Appendix "A" and forming part of this Bylaw, is removed.
3. The Mayor and Corporate Officer are hereby empowered to do all things necessary to give effect to this Bylaw.
4. This Bylaw shall come into full force and take effect upon its adoption and shall be filed with the Registrar of the applicable Land Title Office.
5. This Bylaw may be cited for all purposes as "City of Prince George 2851 Gogolin Road Closure Bylaw No. 9046, 2019".

READ A FIRST TIME THIS 29TH DAY OF JULY , 2019.

READ A SECOND TIME THIS 29TH DAY OF JULY , 2019.

First two readings passed by
a
and eligible to vote.

UNANIMOUS decision of Member of City Council present

READ A THIRD TIME THIS 19TH DAY OF AUGUST , 2019.

Third reading passed by a UNANIMOUS decision of Member of City Council present and eligible to vote.

Certified correct as passed third reading this 26TH day of AUGUST , 2019.




CORPORATE OFFICER OF
THE CITY OF PRINCE GEORGE

APPROVED BY THE MINISTER OF TRANSPORTATION AND INFRASTRUCTURE PURSUANT TO THE PROVISIONS OF SECTION 41(3) OF THE COMMUNITY CHARTER.

THIS 13 DAY OF SEPTEMBER 2019.

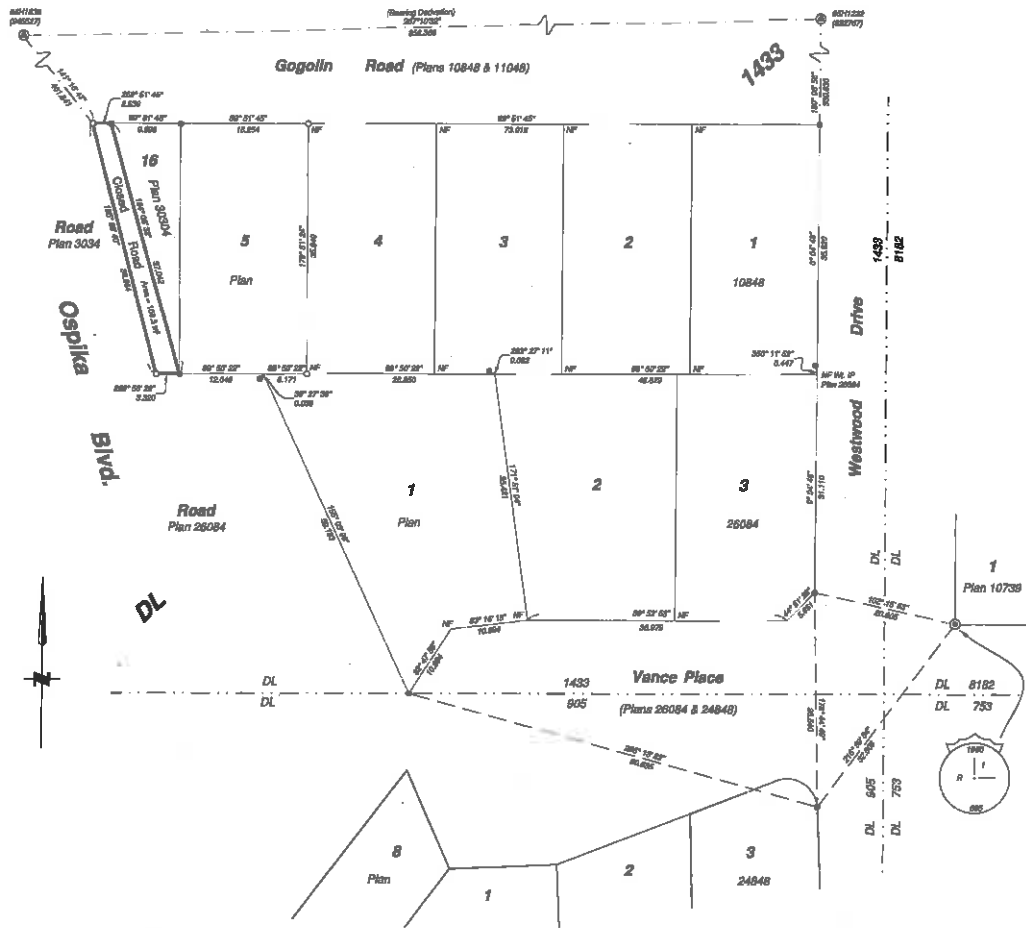

for MINISTER OF TRANSPORTATION
AND INFRASTRUCTURE

ADOPTED THIS 7TH DAY OF OCTOBER , 2019, BY A
UNANIMOUS DECISION OF ALL MEMBERS OF CITY COUNCIL PRESENT AND
ELIGIBLE TO VOTE.


MAYOR

CORPORATE OFFICER

Appendix A

PLAN EPP93590



Reference Plan to Accompany By-law No. 9046 closing a portion of road as shown dedicated on Plan 3034, District Lot 1433, Cariboo District.

Pursuant to Section 120 of the Land Title Act and Section 40 of the Community Charter.

Integrated survey area No. 33 Prince George, BC, NAD83 (CSRS) 4.S.S.B.C.1
SOGS 836.067



The identified plot area of this plan is 200mm in width by 400mm in height (2 plots) when plotted at a scale of 1:400.

All distances are in metres and decimals thereof.

Old bearings are checked from observations between specific control monuments BR11222 and BR11626.

The UTM coordinates and estimated (noted) positional accuracy achieved have been checked from recent published coordinates and checked conditions for geoidal vertical measurements BR11222 and BR11626.

This plan shows horizontal ground-level distances unless otherwise specified. To compute grid distances, multiply ground-level distances by the average vertical factor of 0.999937 which has been checked from control monument BR11222.

Note: Some points are suggested for clarity.

Legend

Symbol	Description
Found	Placed
⊙	Control Monument
⊙	Standard Iron Post
⊙	Standard Concrete Post
⊙	Control Book Plaster
ANA	Absolute Horizontal Accuracy

Georeferencing Positions				
UTM Coordinates, Zone 18, NAD 83 (CSRS), 4.S.S.B.C.1				
Station	Northing	Easting	ANA	CGP
BR11222	2670710.48	814491.84	0.10	0.888125
BR11626	2670687.89	814538.08	0.10	0.888111

The field survey represented by this plan was completed on the 13th day of June, 2019

Albert Kowalski, R.C.L.S. 874

This plan lies within the Regional District of Fraser-Fort George

File: 1905A-PC
 INTERPLAN LAND SURVEYING INC.
 1888 Lynn Street South
 Prince George, BC V2N 1T3
 Tel: (250) 914-0700

