

CITY OF PRINCE GEORGE
BYLAW NO. 8992, 2019

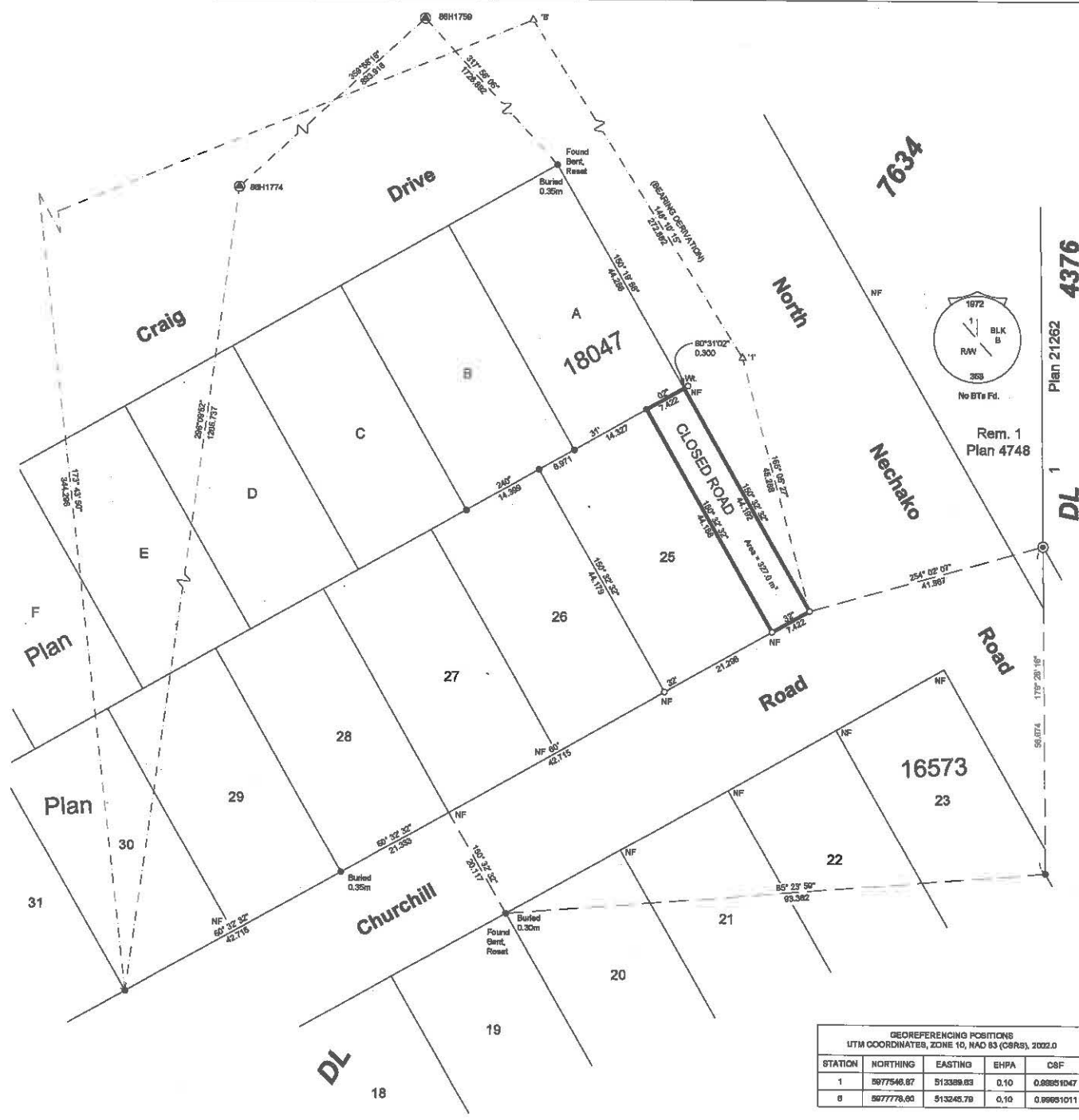
A Bylaw of the City of Prince George to permanently close a portion of road located near the intersection of North Nechako Frontage Road and Churchill Road to remove its highway dedication for the purpose of future disposal of the lands.

WHEREAS the Council of the City of Prince George deems it desirable that an approximate 327 square meters (m²) of road dedicated on Plan 18047, District Lot 7634, Cariboo District be closed to traffic, and that the highway dedication thereof be removed;

AND WHEREAS, in accordance with section 40 of the *Community Charter*, notice of intention to adopt this bylaw has been delivered, posted and published, and an opportunity has been provided for persons who consider they are affected by this bylaw to make representations to Council;

NOW THEREFORE the Council of the City of Prince George, in open meeting assembled, **ENACTS AS FOLLOWS:**

1. That the portion of highway dedicated on Plan 18047, District Lot 7634, Cariboo District, as shown outlined in bold black on Reference Plan EPP90466, attached hereto as Appendix "A" and forming part of this Bylaw, is closed to traffic.
2. That the dedication of the portion of highway dedicated by Plan 18047, District Lot 7634, Cariboo District, as shown outlined in bold black on Reference Plan EPP90466, attached hereto as Appendix "A" and forming part of this Bylaw, is removed.
3. The Mayor and Corporate Officer are hereby empowered to do all things necessary to give effect to this Bylaw.
4. This Bylaw shall come into full force and take effect upon its adoption and shall be filed with the Registrar of the applicable Land Title Office.
5. This Bylaw may be cited for all purposes as "Churchill Road Closure Bylaw No. 8992, 2019".



Rem. 1
Plan 4748

REFERENCE PLAN TO ACCOMPANY
BY-LAW No. 8992 CLOSING A
PORTION OF ROAD ADJACENT TO
LOT 25, AS SHOWN DEDICATED ON
PLAN 18047, DISTRICT LOT 7634,
CARIBOO DISTRICT.

PURSUANT TO SECTION 120 OF THE LAND TITLE ACT
AND SECTION 40 OF THE COMMUNITY CHARTER.

INTEGRATED SURVEY AREA No. 39 PRINCE GEORGE, BC,
NAD83 (CSRS) 4.0.0.BC.1

BCGS 936.097



THE INTENDED PLOT SIZE OF THIS PLAN IS 900mm IN WIDTH BY 432mm IN
HEIGHT (C SIZE) WHEN PLOTTED AT A SCALE OF 1:500.

ALL DISTANCES ARE IN METRES AND DECIMALS THEREOF.

GRID BEARINGS ARE DERIVED FROM DIFFERENTIAL DUAL FREQUENCY
GNSS OBSERVATIONS AND ARE REFERRED TO THE CENTRAL MERIDIAN OF
UTM ZONE 10 (12° WEST LONGITUDE)

THE UTM COORDINATES AND ESTIMATED HORIZONTAL POSITIONAL
ACCURACY ACHIEVED ARE DERIVED FROM DUAL FREQUENCY GNSS
OBSERVATIONS PROCESSED USING NATURAL RESOURCES CANADA'S
PRECISE POINT POSITIONING SERVICE.

THIS PLAN SHOWS HORIZONTAL GROUND-LEVEL DISTANCES, UNLESS
OTHERWISE SPECIFIED. TO COMPUTE GRID DISTANCES, MULTIPLY
GROUND-LEVEL DISTANCES BY THE AVERAGE COMBINED FACTOR OF
0.99951047. THE AVERAGE COMBINED FACTOR HAS BEEN DETERMINED
BASED ON AN ELLIPSOIDAL ELEVATION OF 596.6 METRES.

NOTE:
THIS PLAN SHOWS ONE OR MORE WITNESS POSTS
WHICH ARE NOT SET ON THE TRUE CORNER(S).

LEGEND

| SYMBOLS | DESCRIPTION |
|---------|--|
| FOUND | PLACED |
| ⊙ | CONTROL MONUMENT |
| ● | STANDARD IRON POST |
| △ | TRAVERSE HUB |
| ⊙ | STANDARD CONCRETE POST |
| CSF | COMBINED SCALE FACTOR |
| EHPA | ESTIMATED HORIZONTAL POSITIONAL ACCURACY |
| Rem. | REMAINDER |
| BLK | BLOCK |
| NF | NOTHING FOUND |
| BTA | BEARING TREES |

THE FIELD SURVEY REPRESENTED BY THIS PLAN WAS
COMPLETED ON THE 15TH DAY OF FEBRUARY, 2018.

ALBERT KOEHLER, BCLS 974

THIS PLAN LIES WITHIN THE REGIONAL DISTRICT OF FRASER-FORT GEORGE.

| GEOREFERENCING POSITIONS UTM COORDINATES, ZONE 10, NAD 83 (CSRS), 2002.0 | | | | |
|---|------------|------------|------|------------|
| STATION | NORTHING | EASTING | EHPA | CSF |
| 1 | 5977546.87 | 5123289.83 | 0.10 | 0.99951047 |
| 8 | 5977776.80 | 513245.79 | 0.10 | 0.99951011 |

FILE: 19010-RC
KOEHLER LAND SURVEYING INC.
1688 LYON STREET SOUTH
PRINCE GEORGE, BC V2N 1Y3
TEL: (250) 614-9703