

CITY OF PRINCE GEORGE
BYLAW NO. 8798

A Bylaw of the City of Prince George to permanently close a portion of road located at Recreation Place and to remove its highway dedication for the purpose of future disposal of the lands.

WHEREAS the Council of the City of Prince George deems it desirable that an approximate 0.161 acres (653.4 meters squared) of road dedicated on Plan EPP18682, District Lot 8180, Cariboo District, be closed to traffic, and that the highway dedication thereof be removed;

AND WHEREAS, in accordance with section 40 of the *Community Charter*, notice of intention to adopt this bylaw has been delivered, posted and published, and an opportunity has been provided for persons who consider they are affected by this bylaw to make representations to Council;

NOW THEREFORE the Council of the City of Prince George, in open meeting assembled, **ENACTS AS FOLLOWS:**

1. That the portion of highway dedicated on Plan EPP18682, District Lot 8180, Cariboo District, as shown outlined in bold black on the Reference Plan EPP66493 attached hereto as Appendix "A" and forming part of this Bylaw, is closed to traffic.
2. That the dedication of the portion of highway dedicated by Plan EPP18682, District Lot 8180, Cariboo District, as shown outlined in bold black on the Reference Plan EPP66493, attached hereto as Appendix "A" and forming part of this Bylaw, is removed.
3. The Mayor and Corporate Officer are hereby empowered to do all things necessary to give effect to this Bylaw.
4. This Bylaw shall come into full force and take effect upon its adoption and shall be filed with the Registrar of the applicable Land Title Office.
5. This Bylaw may be cited for all purposes as "Recreation Place Road Closure Bylaw No. 8798, 2017".

READ A FIRST TIME THIS 29th DAY OF MAY, 2017.

READ A SECOND TIME THIS 29th DAY OF MAY, 2017.

First two readings passed by a UNANIMOUS decision of Members of City Council present and eligible to vote.

READ A THIRD TIME THIS 26th DAY OF JUNE, 2017.

Third reading passed by a UNANIMOUS decision of Members of City Council present and eligible to vote.

Certified correct as passed third reading, this 10th day of JULY, 2017.

M. Connelley
CORPORATE OFFICER OF
THE CITY OF PRINCE GEORGE

APPROVED BY THE MINISTER OF TRANSPORTATION AND INFRASTRUCTURE PURSUANT TO THE PROVISIONS OF SECTION 41(3) OF THE COMMUNITY CHARTER
THIS 28th DAY OF June, 2017.

Melissa Nitz
for MINISTER OF TRANSPORTATION
AND INFRASTRUCTURE

ADOPTED THIS 10th DAY OF JULY, 2017,
BY A UNANIMOUS DECISION OF ALL MEMBERS OF CITY COUNCIL PRESENT AND ELIGIBLE TO VOTE.

[Signature]
MAYOR

M. Connelley
DEPUTY CORPORATE OFFICER

Appendix "A" to Bylaw No. 8798, 2017

PLAN EPP66493

REFERENCE PLAN TO ACCOMPANY CITY OF PRINCE GEORGE
 BYLAW No. 8798, TO CLOSE PART OF ROAD SHOWN DEDICATED
 ON PLAN EPP18682, DISTRICT LOT 8180, CARIBOO DISTRICT.

PURSUANT TO SECTION 120 OF THE LAND TITLE ACT AND SECTION 40
 OF THE COMMUNITY CHARTER.

INTEGRATED SURVEY AREA No. 39 PRINCE GEORGE, BC, NAD83 (CSRS) 4.0.0.BC.1

BCGS 93G.087

15 7.5 0 15 30 45 60
 THE INTENDED PLOT SIZE OF THIS PLAN IS 568mm IN WIDTH BY 432mm IN
 HEIGHT (C SIZE) WHEN PLOTTED AT A SCALE OF 1:750

ALL DISTANCES ARE HORIZONTAL GROUND-LEVEL AND ARE SHOWN IN
 METRES AND DECIMALS THEREOF, UNLESS OTHERWISE INDICATED

GRID BEARINGS ARE DERIVED FROM PREVIOUSLY INTEGRATED PLAN
 EPP50758

THE UTM COORDINATES AND ESTIMATED HORIZONTAL POSITIONAL
 ACCURACY ACHIEVED HAVE BEEN DERIVED FROM PREVIOUSLY
 INTEGRATED PLAN EPP50758

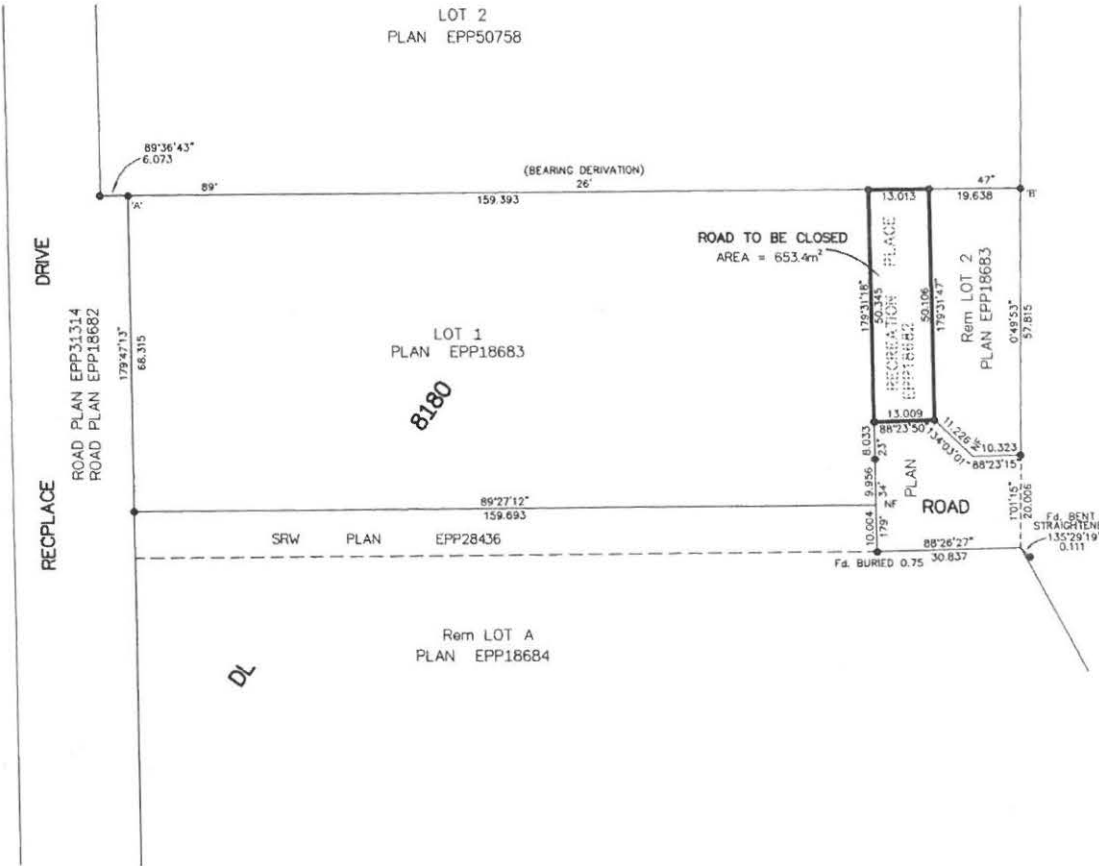
THIS PLAN SHOWS HORIZONTAL GROUND-LEVEL DISTANCES UNLESS
 OTHERWISE SPECIFIED. TO COMPUTE GRID DISTANCES, MULTIPLY
 GROUND-LEVEL DISTANCES BY THE AVERAGE COMBINED FACTOR OF
 0.9995118 WHICH HAS BEEN DERIVED FROM PREVIOUSLY INTEGRATED PLAN
 EPP50758

NOTE:
 SOME POSTS AND LINES HAVE BEEN EXAGGERATED FOR CLARITY

LEGEND

SYMBOLS	DESCRIPTION
FOUND	PLACED
●	STANDARD IRON POST
CSF	COMBINED SCALE FACTOR
EHPA	ESTIMATED HORIZONTAL POSITIONAL ACCURACY

GEOREFERENCING POSITIONS UTM COORDINATES, ZONE 19, NAD 83 (CSRS), 4.0.0.BC.1				
STATION	NORTHING	EASTING	EHPA	CSF
Fd. IP 'A'	5971785.05	515061.86	0.05	0.9995118
Fd. IP 'B'	5971786.90	515253.80	0.05	0.9995126



YELLOWHEAD HIGHWAY No. 16 WEST
 PLANS H735, 22207, PGP-37876, PGP-43039,
 EPP-18683, EPP-28636, EPP-28637, EPP-28638 AND EPP-43542

THE FIELD SURVEY REPRESENTED BY THIS PLAN WAS COMPLETED
 ON THE 25TH DAY OF OCTOBER, 2016
 DARREN NEMT, BC.L.S. 904

THIS PLAN LIES WITHIN THE REGIONAL DISTRICT OF FRASER-FORT GEORGE

McElhanney
 McELHANNEY ASSOCIATES
 LAND SURVEYING LTD
 Suite 12
 550 North Nechako Road
 Prince George BC
 Canada V2K 1A1
 Tel 250 561 2229
 File No. 2341-6516-RC