

CITY OF PRINCE GEORGE
BYLAW NO. 7929

**“an exact copy
made from the
original council
adopted bylaw”**

A Bylaw of the City of Prince George to stop up and close to traffic a portion of unconstructed highway and remove its highway dedication in order to sell the closed portion of highway to the adjacent property owners.

WHEREAS, pursuant to “City of Prince George Delegation of Authority - Real Estate Bylaw No. 7388, 2002”, the City of Prince George has authorized the closure of two portions of unconstructed highway, approximately 334.4 sq. meters (1097.11 sq. feet), dedicated by Plan 1268, adjacent to the west and east boundaries of Lot 16, Block 10, District Lot 343, Cariboo District, Plan 1268 with the intention to sell them to the adjacent landowner, Grandview Transport Ltd. (owners of Lots 14, 15 and 16, Block 10, District Lot 343, Cariboo District, Plan 1268), for the sum of \$20,000.00;

AND WHEREAS the Council of the City of Prince George has deemed it desirable that said road be stopped up and closed to traffic;

AND WHEREAS an opportunity has been provided for persons who consider they are affected by the Bylaw to make representation to Council;

NOW THEREFORE the Council of the City of Prince George, in open meeting assembled, **ENACTS AS FOLLOWS:**

1. That the two portions of unconstructed highway dedicated by Plan 1268 situated adjacent to Lot 16, Block 10, District Lot 343, Cariboo District, Plan 1268, as shown in heavy black outline on the attached Schedule “A” and Schedule “B”, is hereby stopped up and closed to traffic.
2. That dedication of Highway dedicated by Plan 1268, situated adjacent to Lot 16, Block 10, District Lot 343, Cariboo District, Plan 1268, be removed.
3. Prior to adoption, this bylaw shall be advertised once a week for two consecutive weeks in a newspaper circulating in the municipality.
4. The Mayor and Clerk are hereby empowered to do all things necessary to give effect to this bylaw.
5. This bylaw shall come into full force and take effect upon its adoption and shall be filed with the Registrar of the Land Title Office.
6. This Bylaw may be cited for all purposes as "220 Fort Street Road Closure Bylaw No. 7929, 2007".

READ A FIRST TIME THIS THE **23rd** DAY OF **JULY** , **2007.**


READ A SECOND TIME THIS THE **23rd** DAY OF **JULY** , **2007.**

READ A THIRD TIME THIS THE **23rd** DAY OF **JULY** , **2007.**

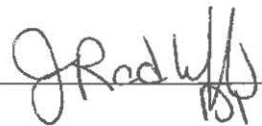
**"an exact copy
made from the
original council
adopted bylaw"**

All three readings passed by a **unanimous** decision of Members of City Council present and eligible to vote.

ADOPTED THIS THE *13th* DAY OF *August*, 2007, BY A *UNANIMOUS* DECISION OF ALL MEMBERS OF CITY COUNCIL PRESENT AND ELIGIBLE TO VOTE.



MAYOR



CLERK

Schedule "A" to Bylaw No. 7929, 2007

PLAN BCP

Deposited in the Land Title Office
at Vancouver, B.C.
8th day of 2007

Register

REFERENCE PLAN TO ACCOMPANY CITY
OF PRINCE GEORGE HIGHWAY CLOSURE
AND REMOVAL OF HIGHWAY DEDICATION
BYLAW 7929, OVER A PORTION OF ROAD
DEDICATED BY PLAN 1268, ADJACENT TO
WEST AND EAST BOUNDARIES OF LOT 16, BK.10,
PLAN 1268, D.L. 343, CARIBOO DISTRICT

Pursuant to Section 40 of the Community
Charter and Section 120 of the Land Title Act

B.C.G.S. 93G.097

SCALE 1:500



LEGEND

Old bearings are derived from observations between control
monuments 8811002 and 8811004, Integrated Survey Area
Number 26, City of Prince George, 1926 (P206)

The plan shows general level measured distances.
Prior to preparation of L.T. 16, measurements
multiply by combined factor of 0.999518.

- DENOTES STANDARD BENCH POINT FOUND
- DENOTES STANDARD BENCH POINT PLACED
- ⊗ INTEGRATED SURVEY AREA CONTROL MONUMENT
- ALL DISTANCES ARE IN METRES

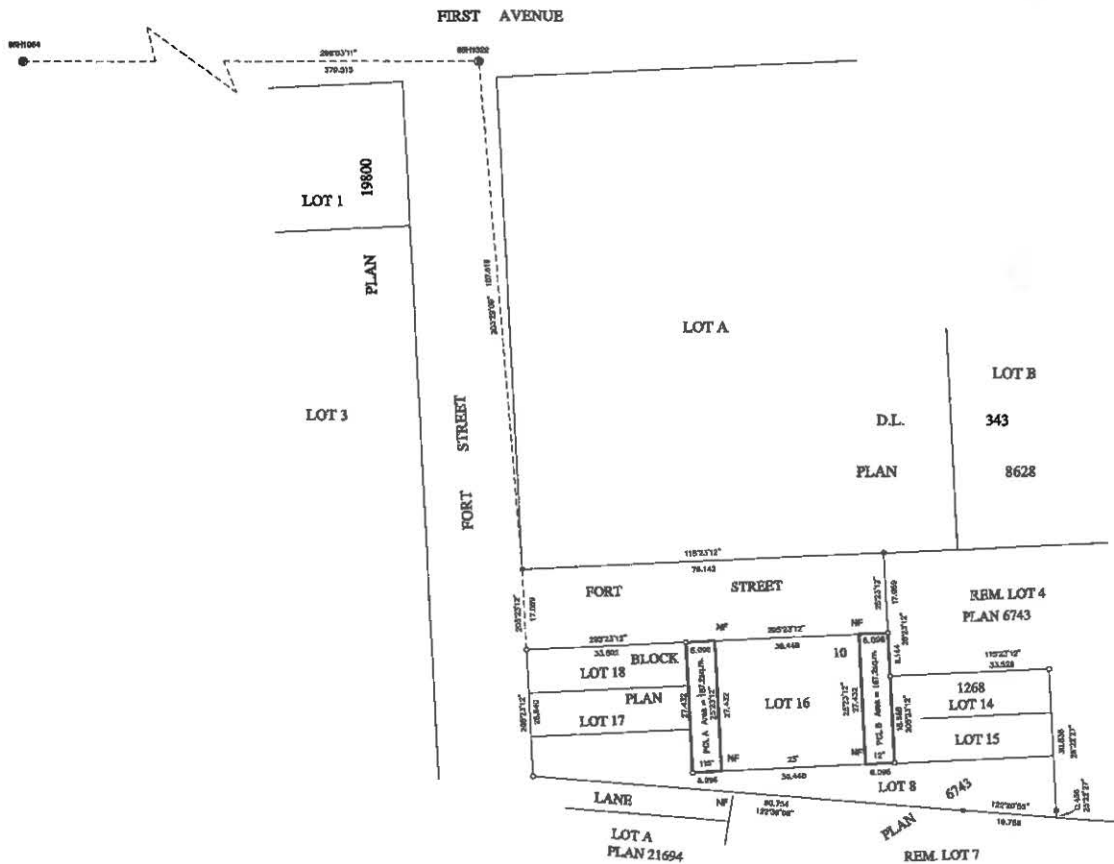
BOOK OF REFERENCE	
DESCRIPTION	AREA
PARCEL A, D.L. 343, PLAN BCP	157.3 sq.m.
PARCEL B, D.L. 343, PLAN BCP	167.3 sq.m.

This plan has been approved by the Mayor - Fort George Regional District

I, Richard J. Cook, a British Columbia land surveyor, of the city
of Prince George, British Columbia, certify that I was present
at and personally supervised the survey represented by this
plan, and that the survey and plan are correct. The field survey
completed and checked, and the checked lines under ECP - 88060
on the 28th day of May 2007.

B.C.L.S.

DRAWING



R.E. COOK & ASSOCIATES
B.C. & CANADA LAND SURVEYORS

881 FRONT STREET
VANCOUVER, B.C. V6J 1K9
PHONE 604-681-0334
FACSIMILE 604-681-0334
FLEXI-COMPUTER-1
R2004@rcof.com

536 VANCOUVER STREET
PRINCE GEORGE, B.C. V2L 2P4
PHONE 250-438-4342
FACSIMILE 250-438-4343

Schedule "B" to Bylaw No. 7929, 2007

203'2"

LOT A

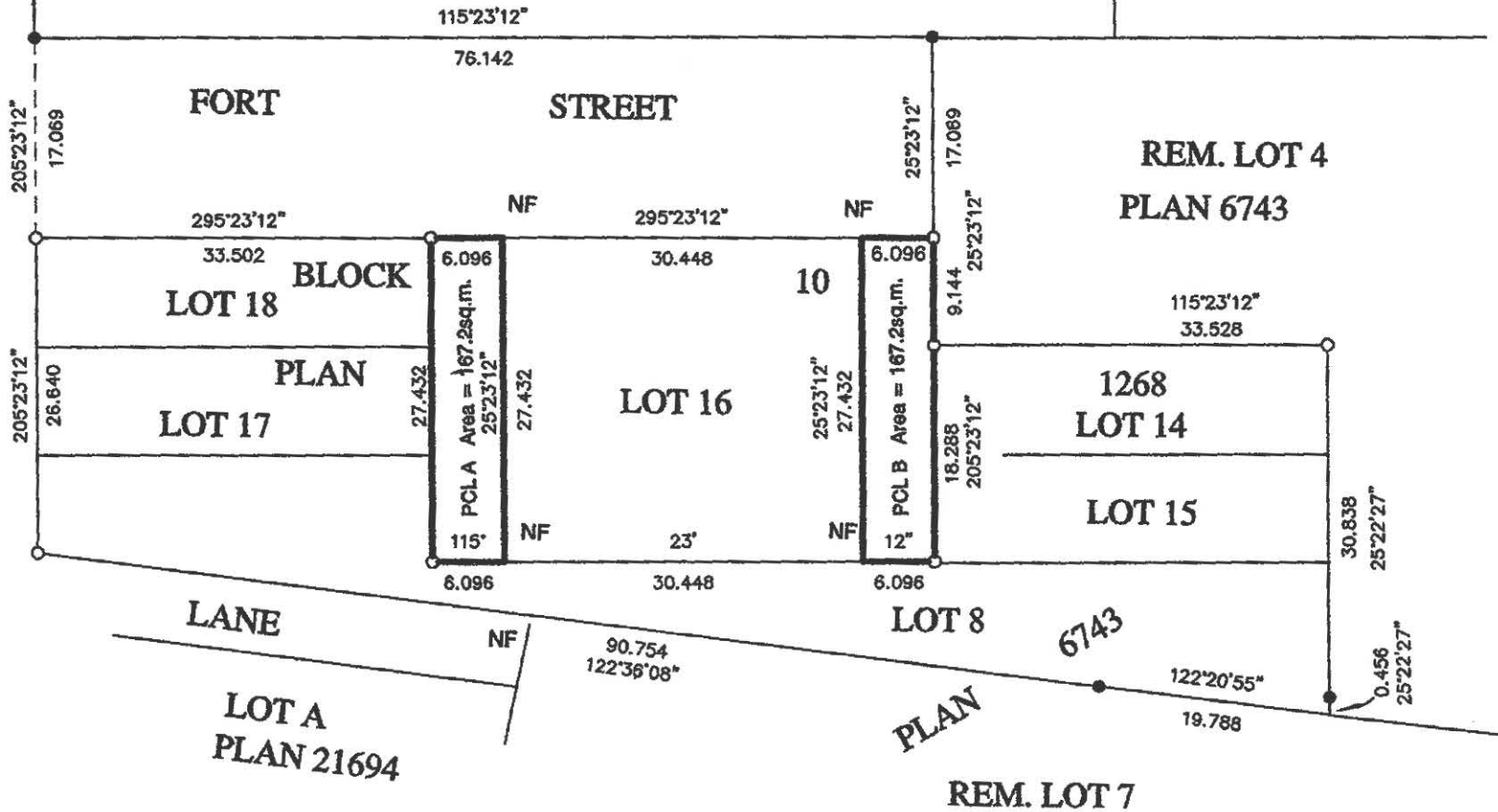
LOT B

D.L.

343

PLAN

8628



LANE

LOT A
PLAN 21694

LOT 8
PLAN 6743

REM. LOT 7

REM. LOT 4
PLAN 6743

115°23'12"
76.142

205°23'12"
17.069

295°23'12"
33.502
LOT 18
BLOCK 10

26.640
LOT 17
PLAN

LOT 16

1268
LOT 14

LOT 15

LOT 8

90.754
122°36'08"

122°20'55"
19.788

30.838
25°22'27"
0.456
25°22'27"

295°23'12"
30.448

295°23'12"
30.448

115°23'12"
33.528

6.096
PCL A Area = 167.2sq.m.
25°23'12"
27.432

6.096
PCL B Area = 167.2sq.m.
25°23'12"
27.432

9.144
25°23'12"
18.288
205°23'12"

115°
6.096
23°
30.448

12°
6.096
30.448

30.838
25°22'27"
0.456
25°22'27"