

CITY OF PRINCE GEORGE
BYLAW NO. 9068, 2019

A Bylaw of the City of Prince George to permanently close a portion of road located near 2224 Queensway to remove its road dedication for the purpose of future disposal of the lands.

WHEREAS the Council of the City of Prince George deems it desirable that an approximate 298.4 square metres of road dedicated on Plan 1409, Block 23, District Lot 417, Cariboo District as shown on Reference Plan EPP96797, be closed to traffic, and that the road dedication thereof be removed;

AND WHEREAS, in accordance with section 40 of the *Community Charter*, notice of intention to adopt this bylaw has been delivered, posted and published, and an opportunity has been provided for persons who consider they are affected by this bylaw to make representations to Council;

NOW THEREFORE the Council of the City of Prince George, in open meeting assembled, **ENACTS AS FOLLOWS:**

1. That the portion of road dedicated on Plan 1409, Block 23, District Lot 417, Cariboo District, as shown outlined in bold black on Reference Plan EPP96797, attached hereto as Appendix "A" and forming part of this Bylaw, is closed to traffic.
2. That the portion of road dedicated on Plan 1409, Block 23, District Lot 417, Cariboo District, as shown outlined in bold black on the proposed Reference Plan EPP96797, attached hereto as Appendix "A" and forming part of this Bylaw, is removed.
3. The Mayor and Corporate Officer are hereby empowered to do all things necessary to give effect to this Bylaw.
4. This Bylaw shall come into full force and take effect upon its adoption and shall be filed with the Registrar of the applicable Land Title Office.
5. This Bylaw may be cited for all purposes as "City of Prince George 2224 Queensway Road Closure Bylaw No. 9068, 2019".

READ A FIRST TIME THIS 4TH DAY OF NOVEMBER , 2019.

READ A SECOND TIME THIS 4TH DAY OF NOVEMBER , 2019.

First two readings passed by a **UNANIMOUS** decision of Members of City Council present and eligible to vote.

READ A THIRD TIME THIS **16TH** DAY OF **DECEMBER**, 2019.

Third reading passed by a **UNANIMOUS** decision of Members of City Council present and eligible to vote.

ADOPTED THIS **20th** DAY OF **JANUARY**, 2020, BY A
UNANIMOUS DECISION OF ALL MEMBERS OF CITY COUNCIL PRESENT AND
ELIGIBLE TO VOTE.



MAYOR



CORPORATE OFFICER

**Reference Plan to Accompany
By-law No. 9068 (City of Prince
George) to close a portion of Lane
shown dedicated on Plan 1409,
Block 23, District Lot 417,
Cariboo District.**

Pursuant to Section 120 of the Land Title Act and Section 40 of the Community Charter.

Integrated survey area No. 39 Prince George, BC,
NAD83 (CSRS) 4.0.0.BC.1

BCGS 93G.097



The intended plot size of this plan is 432mm in width by 559mm in height (C size) when plotted at a scale of 1:250.

All distances are in metres and decimals thereof.

Grid bearings are derived from observations between geodetic control monuments 383869 and 842435.

The UTM coordinates and estimated absolute accuracy achieved have been derived from mascon published coordinates and standard deviations for geodetic control monuments 383869 and 842435.

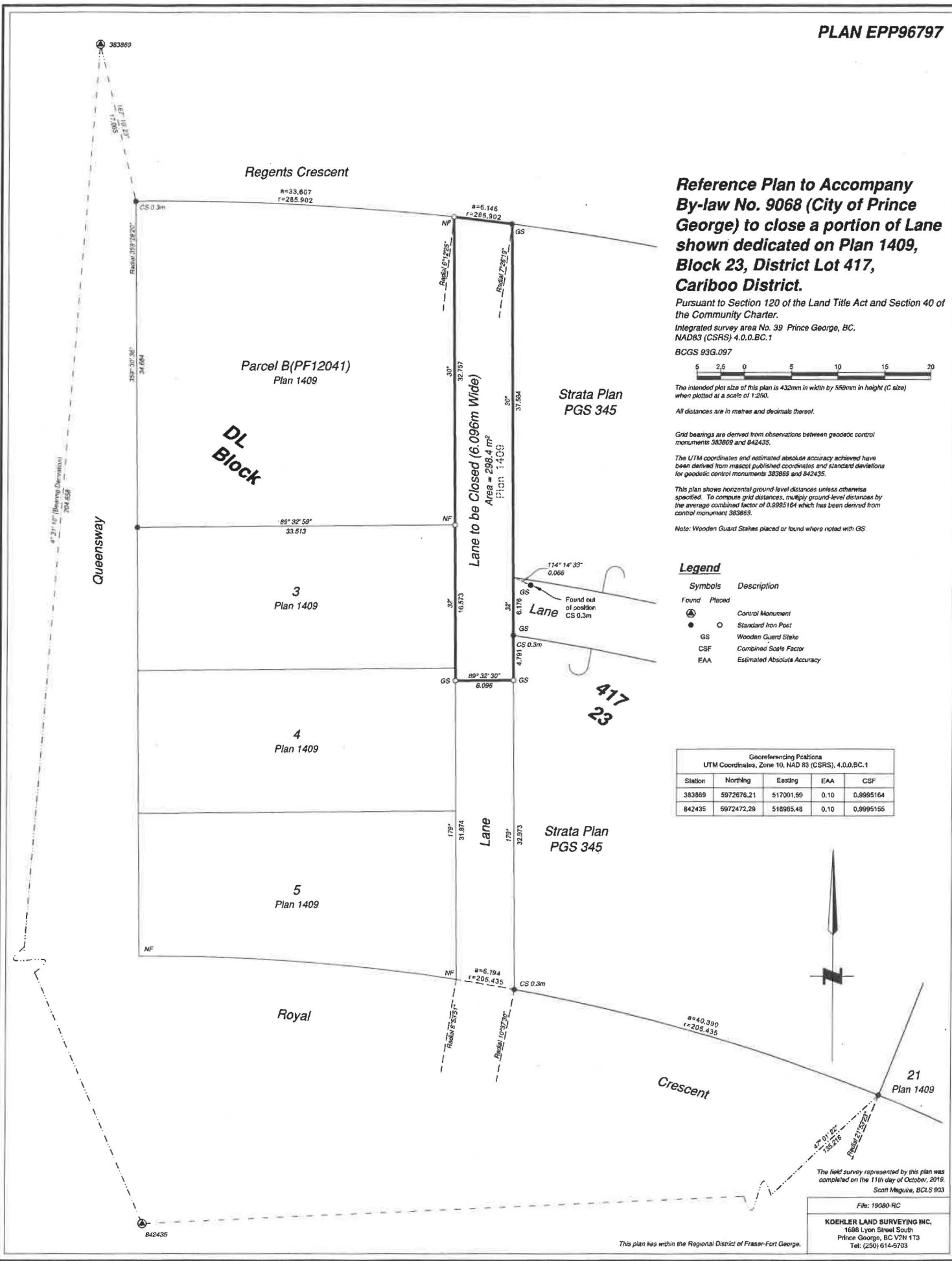
This plan shows horizontal ground-level distances unless otherwise specified. To compute grid distances, multiply ground-level distances by the average combined factor of 0.9995164 which has been derived from control monument 383869.

Note: Wooden Guard Stakes placed or found where noted with GS

Legend

Found	Placed	Description
⊙	⊙	Control Monument
●	○	Standard Iron Post
GS		Wooden Guard Stake
CSF		Combined Scale Factor
EAA		Estimated Absolute Accuracy

Georeferencing Positions UTM Coordinates, Zone 10, NAD 83 (CSRS), 4.0.0.BC.1				
Station	Northing	Easting	EAA	CSF
383869	5972676.21	517001.59	0.10	0.9995164
842435	5972472.28	516985.48	0.10	0.9995165



The field survey represented by this plan was completed on the 11th day of October, 2016.
Scott McGuire, BCL S 903

File: 19080-RC
KOHLER LAND SURVEYING INC.
1688 Lyon Street South
Prince George, BC V2N 1T3
Tel: (250) 614-9703

This plan lies within the Regional District of Fraser-Fort George.