

CITY OF PRINCE GEORGE
BYLAW NO. 9147, 2020

A Bylaw of the City of Prince George to permanently close a portion of road located adjacent to 2217 Regents Crescent and to remove its lane dedication for the purpose of future disposal of the lands.

WHEREAS the Council of the City of Prince George deems it desirable that an approximate 554.7 m² (square metres) of lane dedicated on Plan 1409, as shown on Reference Plan EPP104229 adjacent to The Common Property Strata Plan PGS345 be closed to traffic, and that the lane dedication thereof be removed;

AND WHEREAS, in accordance with section 40 of the *Community Charter*, notice of intention to adopt this bylaw has been delivered, posted and published, and an opportunity has been provided for persons who consider they are affected by this bylaw to make representations to Council;

NOW THEREFORE the Council of the City of Prince George, in open meeting assembled, **ENACTS AS FOLLOWS:**

1. That the portion of lane dedicated on Plan 1409, adjacent to the property legally described as The Common Property Strata Plan PGS345, as shown outlined in bold black on Reference Plan EPP104229, attached hereto as Appendix "A" and forming part of this Bylaw, is closed to traffic.
2. That the portion of lane dedicated on Plan 1409, adjacent to the property legally described as The Common Property Strata Plan PGS345, as shown outlined in bold black on Reference Plan EPP104229, attached hereto as Appendix "A" and forming part of this Bylaw, is removed.
3. The Mayor and Corporate Officer are hereby empowered to do all things necessary to give effect to this Bylaw.
4. This Bylaw shall come into full force and take effect upon its adoption and shall be filed with the Registrar of the applicable Land Title Office.
5. This Bylaw may be cited for all purposes as "City of Prince George 2217 Regents Crescent Road Closure Bylaw No. 9147, 2020".

READ A FIRST TIME THIS 5TH DAY OF OCTOBER , 2020.

READ A SECOND TIME THIS 5TH DAY OF OCTOBER , 2020.

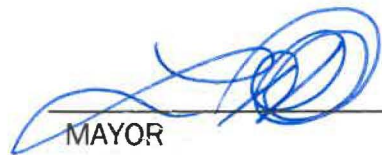
First two readings passed by a **UNANIMOUS** decision of Members of City Council present and eligible to vote.

READ A THIRD TIME THIS **9TH** DAY OF **NOVEMBER** , 2020.

Third reading passed by a **UNANIMOUS** decision of Members of City Council present and eligible to vote.

ADOPTED THIS **23RD** DAY OF **NOVEMBER** , 2020,

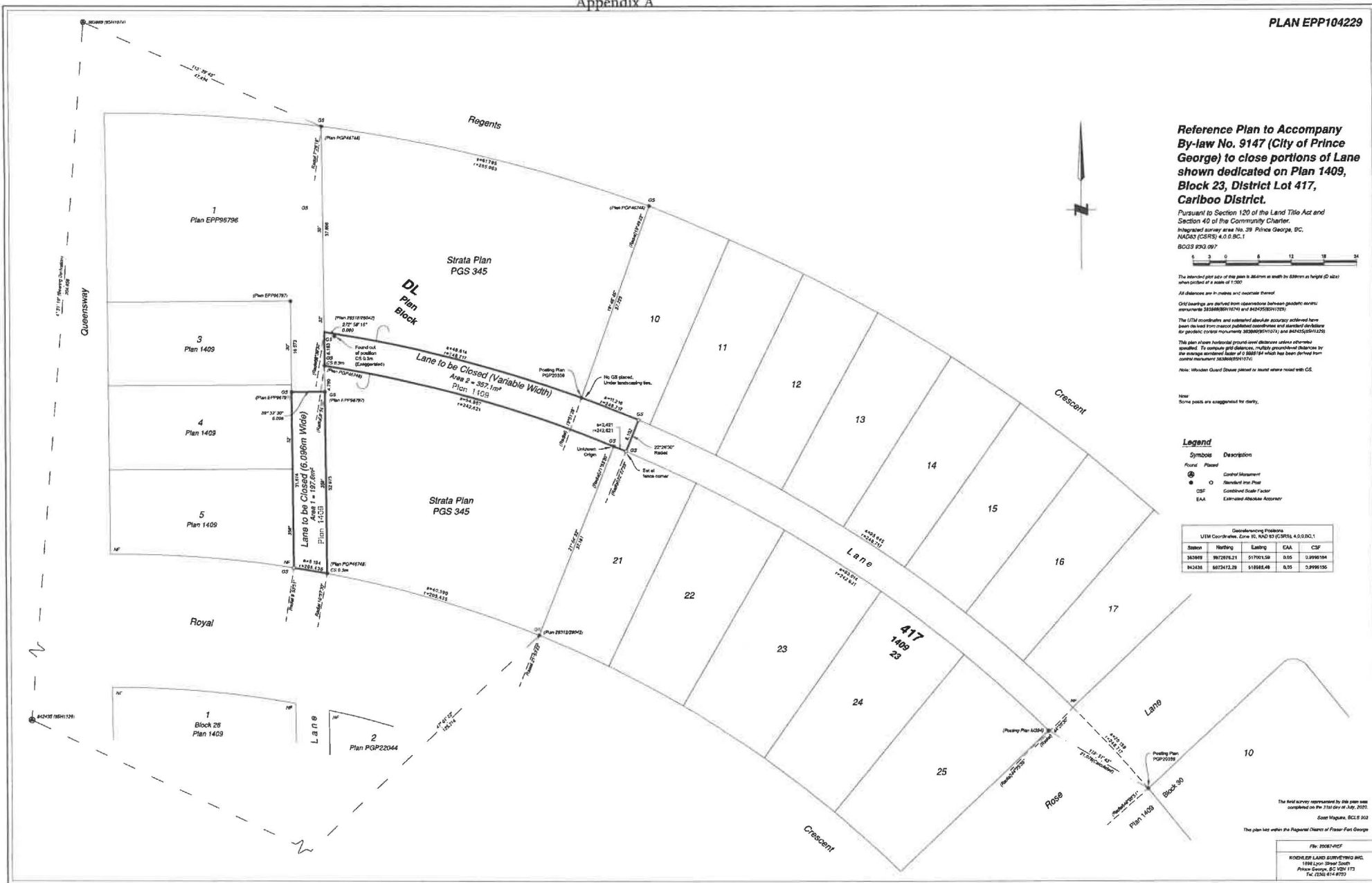
BY A **UNANIMOUS** DECISION OF ALL MEMBERS OF CITY COUNCIL PRESENT AND ELIGIBLE TO VOTE.



MAYOR



CORPORATE OFFICER



Reference Plan to Accompany By-law No. 9147 (City of Prince George) to close portions of Lane shown dedicated on Plan 1409, Block 23, District Lot 417, Cariboo District.

Pursuant to Section 120 of the Land Title Act and Section 40 of the Community Charter.
 Integrated survey area No. 39 Prince George, BC.
 NAD83 (CSRS) 4.0 B.C.1
 BCLP 2303.997



All distances are in metres and convertible thereof.
 Grid bearings are derived from observations between geodetic control monuments 221868(2017)174 and 842405(2017)152.
 The ITRM coordinates and estimated absolute accuracy achieved have been derived from recent published coordinates and standard deviations for geodetic control monuments 221868(2017)174 and 842405(2017)152.
 This plan shows horizontal ground-level distances unless otherwise specified. To convert grid distances, multiply ground-level distances by the average correction factor of 1.000114 which has been derived from control monument 221868(2017)174.
 Note: Wooden Guard Shown placed in sound stone noted with CS.

Note:
 Some points are suggested for clarity.

Legend

Symbol	Description
⊙	Fixed Point
⊙	Control Monument
⊙	Boundary Iron Pin
CS*	Controlled Survey Factor
E.A.	Estimated Absolute Accuracy

Georeferencing Positions
 UTM Coordinates, Zone 18, NAD 83 (CSRS) 4.0 B.C.1

Station	Northing	Easting	EAA	CSF
242599	5972785.21	517765.58	0.05	0.9999194
242638	5972472.28	518462.48	0.29	0.9999195

The field survey represented by this plan was completed on the 11th day of July, 2020.
 Scott Macquie, BCLP 5 503
 The plan lies within the Regional District of Fraser-Fort George

File: 1008/4167
 KODLER LAND SURVEYING INC.
 1188 Lynn Street South
 Prince George, BC V2Y 1T3
 Tel: (250) 574-4722