

CITY OF PRINCE GEORGE
BYLAW NO. 9061, 2019

A Bylaw of the City of Prince George to permanently close a portion of lane located adjacent to 1445 Dogwood Street to remove its highway dedication for the purpose of future disposal of the lands.

WHEREAS the Council of the City of Prince George deems it desirable that an approximate 102.2m² of lane dedicated on Plan 1268, within Block 227, District Lot 343, Cariboo District as shown on Reference Plan EPP97638 be closed to traffic, and that the highway dedication thereof be removed;

AND WHEREAS, in accordance with section 40 of the *Community Charter*, notice of intention to adopt this bylaw has been delivered, posted and published, and an opportunity has been provided for persons who consider they are affected by this bylaw to make representations to Council;

NOW THEREFORE the Council of the City of Prince George, in open meeting assembled, **ENACTS AS FOLLOWS:**

1. That the portion of lane dedicated on Plan 1268, within the block legally described as Block 227, District Lot 343, Cariboo District, as shown outlined in bold black on the proposed Reference Plan EPP97638, attached hereto as Appendix "A" and forming part of this Bylaw, is closed to traffic.
2. That the portion of lane dedicated on Plan 1268, within the block legally described as Block, 227, District Lot 343, Cariboo District, as shown outlined in bold black on the proposed Reference Plan EPP97638, attached hereto as Appendix "A" and forming part of this Bylaw, is removed.
3. The Mayor and Corporate Officer are hereby empowered to do all things necessary to give effect to this Bylaw.
4. This Bylaw shall come into full force and take effect upon its adoption and shall be filed with the Registrar of the applicable Land Title Office.
5. This Bylaw may be cited for all purposes as "City of Prince George 1445 Dogwood Street Road Closure Bylaw No. 9061, 2019".

READ A FIRST TIME THIS **20TH** DAY OF **JANUARY** , 2020.

READ A SECOND TIME THIS **20TH** DAY OF **JANUARY** , 2020.

First two readings passed by a **UNANIMOUS** decision of Members of City Council present and eligible to vote.

READ A THIRD TIME THIS 24TH DAY OF FEBRUARY, 2020.

Third reading passed by a UNANIMOUS decision of Members of City Council present and eligible to vote.

Certified correct as passed third reading this 25TH day of FEBRUARY, 2020.


CORPORATE OFFICER OF
THE CITY OF PRINCE GEORGE


APPROVED BY THE MINISTER OF TRANSPORTATION AND INFRASTRUCTURE PURSUANT TO THE PROVISIONS OF SECTION 41(3) OF THE COMMUNITY CHARTER.

THIS 17TH DAY OF MARCH, 2020.


for MINISTER OF TRANSPORTATION
AND INFRASTRUCTURE

ADOPTED THIS 6TH DAY OF APRIL, 2020,

BY A UNANIMOUS DECISION OF ALL MEMBERS OF CITY COUNCIL PRESENT AND ELIGIBLE TO VOTE.


MAYOR


CORPORATE OFFICER

Reference Plan to accompany Bylaw No. 9061 (Prince George) closing part of Lane within Block 227, shown dedicated on Plan 1268, District Lot 343, Cariboo District.

PURSUANT TO SECTION 120 OF THE LAND TITLE ACT AND SECTION 40 OF THE COMMUNITY CHARTER.
 Integrated survey area No. 30 Prince George, BC,
 NADES (CRS) 4.0.G.B.C.1
 SOGS 8303.067



The intended plan size of this plan is 240mm in width by 300mm in height (D size) when printed at a scale of 1:100.

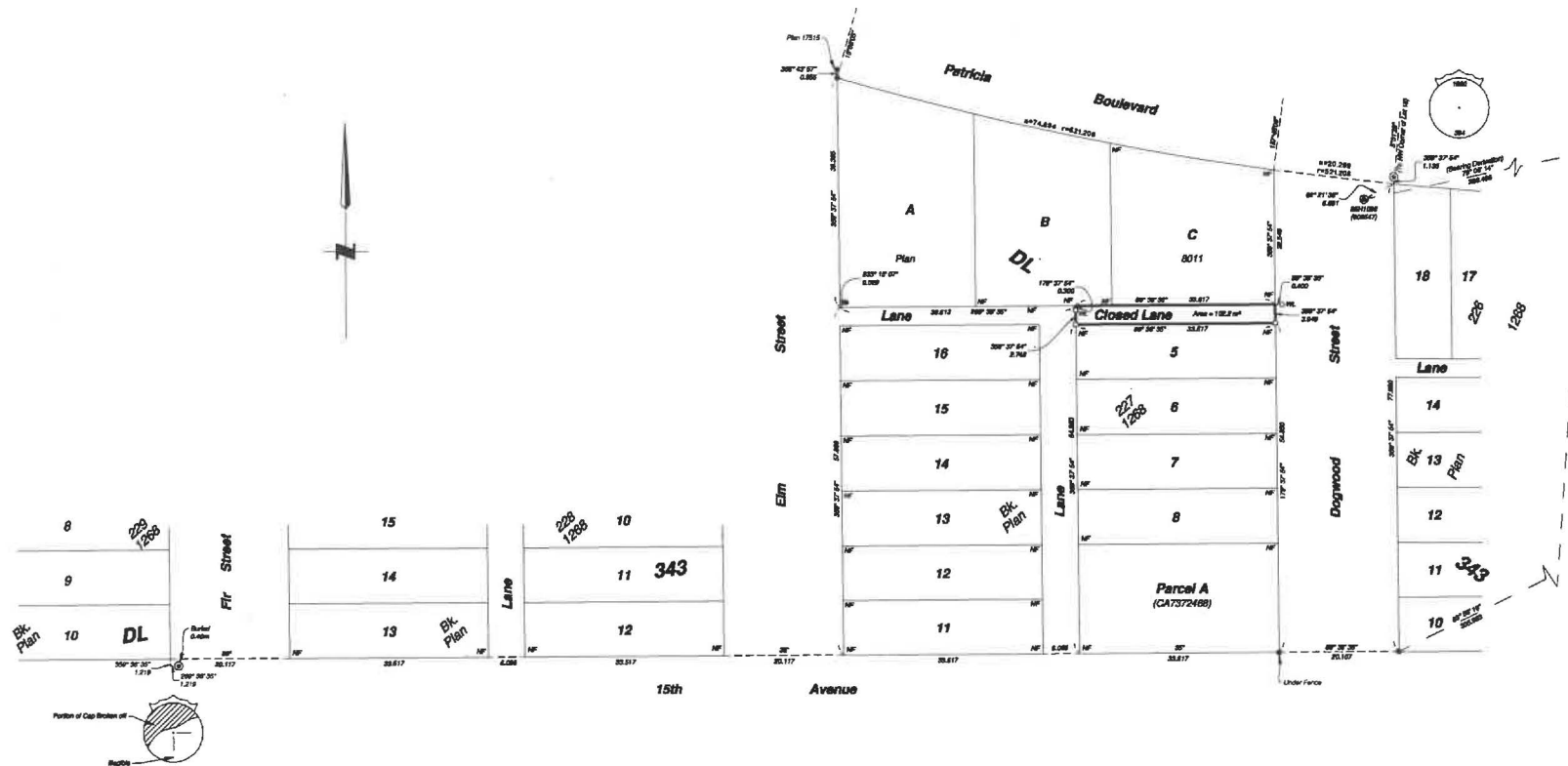
All distances are in metres and decimals thereof.
 All bearings are in degrees and decimals thereof.
 All bearings are derived from observations between geodetic control monuments 8011208 and 8011077.
 The UTM coordinates and estimated absolute accuracy on board have been derived from master geodetic coordinates and standard deviations for geodetic control monuments 8011208 and 8011077.
 This plan shows horizontal ground level dimensions unless otherwise specified. To compare and determine, multiple ground level elevations by the average combined factor of 0.000102 which has been derived from control monument 8011088.

Note:
 This plan shows one or more witness points which are not set on the line corners.
 Some points are unnumbered for clarity.
 Closed circles are set at every post set unless otherwise noted.

Legend

Symbol	Description
Point	Point
⊙	Control Monument
⊙	Standard Iron Post
⊙	Standard Concrete Post
⊙	Combined Rods Post
E.A.	Estimated Absolute Accuracy
BL	Block

Benchmarking Positions				
UTM Coordinates, Zone 18, NAD 83 (CRS), 4.0.G.B.C.1				
Station	Northing	Easting	E.A.	CRP
8011088	8873879.87	613484.41	0.10	0.000102
8011077	8873736.80	611774.61	0.10	0.000102



The field survey represented by this plan was completed on the 23rd day of October, 2019.
 Albert Foshier, SCLS 874
 This plan lies with the Regional District of Fraser-Fort George

FILE: 1900-RC
 HOBBS & LAND SURVEYORS INC.
 1800 Lyon Street South
 Prince George, BC V2N 1T3
 Tel: (250) 614-4708