

CITY OF PRINCE GEORGE  
BYLAW NO. 9045, 2019

A Bylaw of the City of Prince George to permanently close a portion of road located adjacent to 2840 Vance Place to remove its highway dedication for the purpose of future disposal of the lands.

WHEREAS the Council of the City of Prince George deems it desirable that an approximate 222.1 square metre area of road shown on Reference Plan EPP93622 be closed to traffic, and that the highway dedication thereof be removed;

AND WHEREAS, in accordance with section 40 of the *Community Charter*, notice of intention to adopt this bylaw has been delivered, posted and published, and an opportunity has been provided for persons who consider they are affected by this bylaw to make representations to Council;

NOW THEREFORE the Council of the City of Prince George, in open meeting assembled, ENACTS AS FOLLOWS:

1. That the portion of highway shown outlined in bold black on Reference Plan EPP93622, attached hereto as Appendix "A" and forming part of this Bylaw, is closed to traffic.
2. That the dedication of the portion of highway shown outlined in bold black on Reference Plan EPP93622, attached hereto as Appendix "A" and forming part of this Bylaw, is removed.
3. The Mayor and Corporate Officer are hereby empowered to do all things necessary to give effect to this Bylaw.
4. This Bylaw shall come into full force and take effect upon its adoption and shall be filed with the Registrar of the applicable Land Title Office.
5. This Bylaw may be cited for all purposes as "City of Prince George 2840 Vance Place Road Closure Bylaw No. 9045, 2019".

READ A FIRST TIME THIS                    29<sup>TH</sup>                    DAY OF                    JULY                    , 2019.

READ A SECOND TIME THIS                    29<sup>TH</sup>                    DAY OF                    JULY                    , 2019.

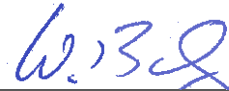
First two readings passed by  
a  
and eligible to vote.

UNANIMOUS    decision of Member of City Council present

READ A THIRD TIME THIS 19<sup>TH</sup> DAY OF AUGUST, 2019.

Third reading passed by a UNANIMOUS decision of Member of City Council present and eligible to vote.

Certified correct as passed third reading this 26<sup>TH</sup> day of AUGUST, 2019.

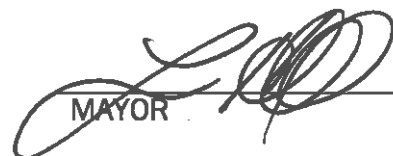

  
CORPORATE OFFICER OF  
THE CITY OF PRINCE GEORGE

APPROVED BY THE MINISTER OF TRANSPORTATION AND INFRASTRUCTURE PURSUANT TO THE PROVISIONS OF SECTION 41(3) OF THE COMMUNITY CHARTER.

THIS 13 DAY OF SEPTEMBER 2019.

  
for MINISTER OF TRANSPORTATION  
AND INFRASTRUCTURE

ADOPTED THIS 7<sup>TH</sup> DAY OF OCTOBER, 2019, BY A  
UNANIMOUS DECISION OF ALL MEMBERS OF CITY COUNCIL PRESENT AND  
ELIGIBLE TO VOTE.

  
MAYOR  
  
CORPORATE OFFICER

**Reference Plan to Accompany  
By-law No. 9045 closing a portion  
of road as shown dedicated on  
Plan 26084, District Lot 1433,  
Cariboo District.**

Pursuant to Section 120 of the Land Title Act and Section 40 of the Community Charter.

Integrated survey area No. 39 Prince George, BC,  
NAD83 (CSRS) 4.0.0.BC.1  
BCGS 893.087



The intended plot area of this plan is 800mm in width by 480mm in height (2:1) when plotted at a scale of 1:500.  
All distances are in metres and decimal thereof.  
Grid bearings are derived from observations between geodetic control monuments 6811252 and 6811253.  
The UTM coordinates and adjusted horizontal positional accuracy achieved have been derived from resected published coordinates and observed deviations for geodetic control monuments 6811252 and 6811253.

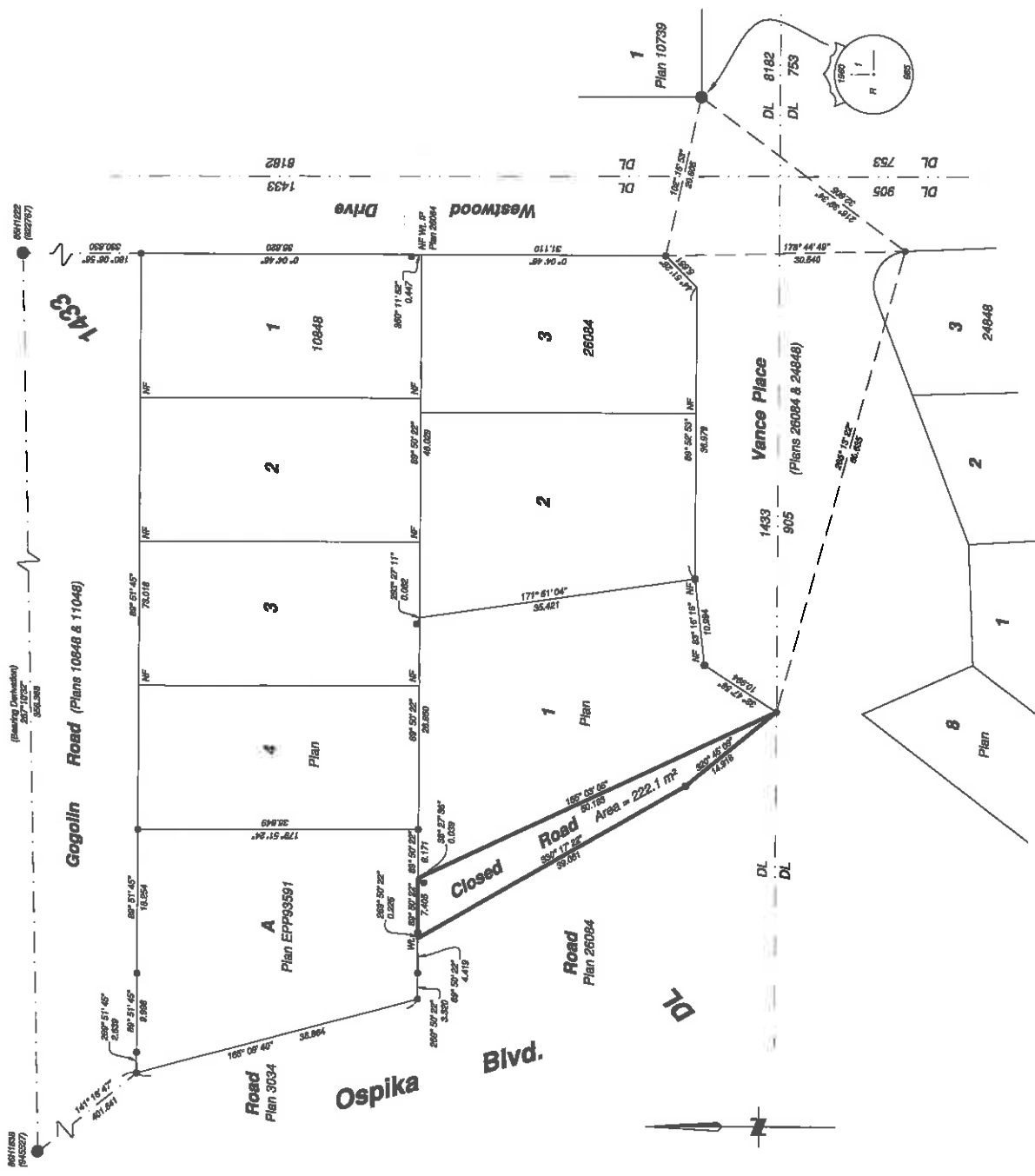
This plan shows horizontal ground-level distances unless otherwise specified. To compute grid distances, suitable ground-level distances by the method of least squares of 0.0005128 which has been derived from control monument 6811252.

Note: This plan shows one or more witness points which are not set on the top corner(s). Same points are suggested for clarity.

**Legend**

Found	Placed	Description
●	○	Control Monument
●	○	Standard Iron Post
●	○	Standard Concrete Post
●	○	CSF
●	○	ANA
●	○	Absolute Horizontal Accuracy

Georeferencing Positions	
Station	Easting
6811252	514461.84
6811253	514138.08
6811255	514138.08
6811256	514138.08
6811257	514138.08
6811258	514138.08
6811259	514138.08
6811260	514138.08
6811261	514138.08
6811262	514138.08
6811263	514138.08
6811264	514138.08
6811265	514138.08
6811266	514138.08
6811267	514138.08
6811268	514138.08
6811269	514138.08
6811270	514138.08
6811271	514138.08
6811272	514138.08
6811273	514138.08
6811274	514138.08
6811275	514138.08
6811276	514138.08
6811277	514138.08
6811278	514138.08
6811279	514138.08
6811280	514138.08
6811281	514138.08
6811282	514138.08
6811283	514138.08
6811284	514138.08
6811285	514138.08
6811286	514138.08
6811287	514138.08
6811288	514138.08
6811289	514138.08
6811290	514138.08
6811291	514138.08
6811292	514138.08
6811293	514138.08
6811294	514138.08
6811295	514138.08
6811296	514138.08
6811297	514138.08
6811298	514138.08
6811299	514138.08
6811300	514138.08



The field survey represented by this plan was completed on the 13th day of June, 2019  
Albert Koehler, BCLS 974  
This plan lies within the Regional District of Fraser-Fort George

FILE: 19057AC  
KOEHLER LAND SURVEYING INC.  
1000-10th Street  
Prince George, BC V2N 1T3  
Tel: (250) 814-9703