

**CITY OF PRINCE GEORGE**  
**BYLAW NO. 8737**

**A Bylaw of the City of Prince George to permanently close a portion of road located at 857 Wolczuk Road and to remove its highway dedication for the purpose of future disposal of the lands.**

**WHEREAS** the Council of the City of Prince George deems it desirable that an approximate 0.43 acres (0.175 hectares) of road dedicated on Plan 1360, District Lot 2166, and part of road dedicated on Plan 9233, District Lot 823, Cariboo District, be closed to traffic, and that the highway dedication thereof be removed;

**AND WHEREAS**, in accordance with section 40 of the *Community Charter*, notice of intention to adopt this bylaw has been delivered, posted and published, and an opportunity has been provided for persons who consider they are affected by this bylaw to make representations to Council;

**NOW THEREFORE** the Council of the City of Prince George, in open meeting assembled, **ENACTS AS FOLLOWS:**

1. That the portion of highway dedicated on Plan 1360, District Lot 2166, and part of road dedicated on Plan 9233, District Lot 823, Cariboo District, as shown outlined in bold black on the Reference Plan EPP71563 attached hereto as Appendix "A" and forming part of this Bylaw, is closed to traffic.
2. That the dedication of the portion of highway dedicated by Plan 1360, District Lot 2166, and part of road dedicated on Plan 9233, District Lot 823, Cariboo District, as shown outlined in bold black on the Reference Plan EPP71563, attached hereto as Appendix "A" and forming part of this Bylaw, is removed.
3. The Mayor and Corporate Officer are hereby empowered to do all things necessary to give effect to this Bylaw.
4. This Bylaw shall come into full force and take effect upon its adoption and shall be filed with the Registrar of the applicable Land Title Office.
5. This Bylaw may be cited for all purposes as "857 Wolczuk Road Closure Bylaw No. 8737, 2017".

READ A FIRST TIME THIS 29<sup>th</sup> DAY OF MAY , 2017.

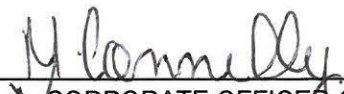
READ A SECOND TIME THIS 29<sup>th</sup> DAY OF MAY , 2017.

First two readings passed by a UNANIMOUS decision of Members of City Council present and eligible to vote.

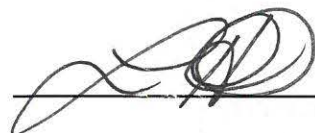
READ A THIRD TIME THIS 26<sup>th</sup> DAY OF JUNE , 2017.

Third reading passed by a UNANIMOUS decision of Members of City Council present and eligible to vote.

Certified correct as passed third reading, this 10<sup>th</sup> day of JULY , 2017.

  
CORPORATE OFFICER OF  
THE CITY OF PRINCE GEORGE

ADOPTED THIS 10<sup>th</sup> DAY OF July , 2017,  
BY A UNANIMOUS DECISION OF ALL MEMBERS OF CITY COUNCIL PRESENT AND  
ELIGIBLE TO VOTE.

  
MAYOR

  
DEPUTY CORPORATE OFFICER

REFERENCE PLAN TO ACCOMPANY ROAD CLOSURE BY-LAW No. 8737 (PRINCE GEORGE) TO CLOSE PART OF ROAD DEDICATED ON PLAN 1360, DISTRICT LOT 2166, AND PART OF ROAD DEDICATED ON PLAN 9233, DISTRICT LOT 823, CARIBOO DISTRICT.

PURSUANT TO SECTION 120 OF THE LAND TITLE ACT AND SECTION 40 OF THE COMMUNITY CHARTER.

INTEGRATED SURVEY AREA No. 39 PRINCE GEORGE, BC, NAD83 (CSRS) 4.0.0.BC.1

BCGS 93G.097



THE INTENDED PLOT SIZE OF THIS PLAN IS 432mm IN WIDTH BY 560mm IN HEIGHT (C SIZE) WHEN PLOTTED AT A SCALE OF 1:1250.

ALL DISTANCES ARE IN METRES AND DECIMALS THEREOF.

GRID BEARINGS ARE DERIVED FROM OBSERVATIONS BETWEEN GEODETIC CONTROL MONUMENTS 86H1596 AND 86H1577.

THE UTM COORDINATES AND ESTIMATED HORIZONTAL POSITIONAL ACCURACY ACHIEVED HAVE BEEN DERIVED FROM MASCOT PUBLISHED COORDINATES AND STANDARD DEVIATIONS FOR GEODETIC CONTROL MONUMENT 86H1596.

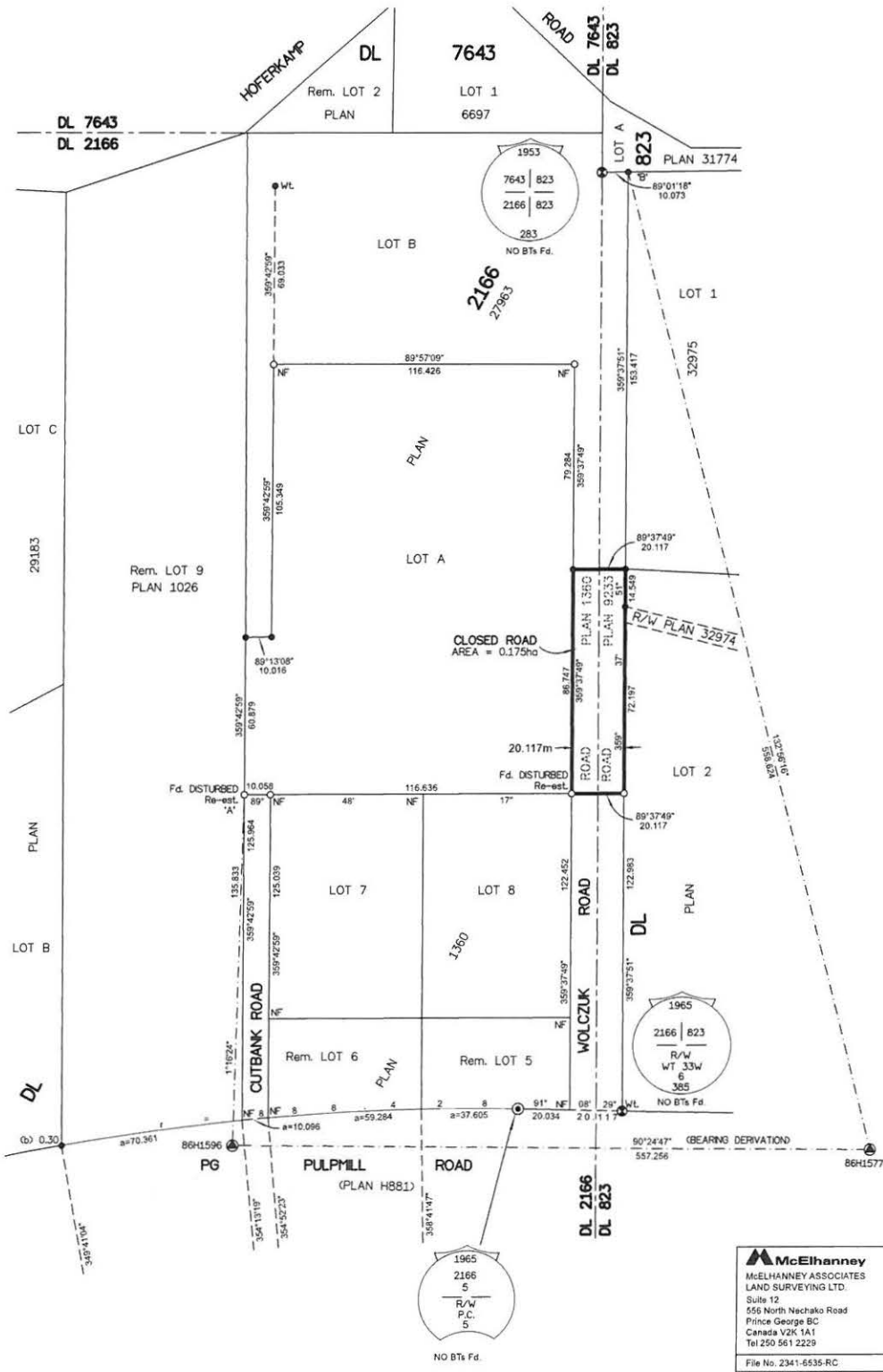
THIS PLAN SHOWS HORIZONTAL GROUND-LEVEL DISTANCES UNLESS OTHERWISE SPECIFIED TO COMPUTE GRID DISTANCES, MULTIPLY GROUND-LEVEL DISTANCES BY THE AVERAGE COMBINED FACTOR OF 0.9995161 WHICH HAS BEEN DERIVED FROM GEODETIC CONTROL MONUMENT 86H1596.

LEGEND

SYMBOLS	DESCRIPTION
FOUND PLACED	
●	CONTROL MONUMENT
○	STANDARD IRON POST
⊙	STANDARD CONCRETE POST
⦿	STANDARD CAPPED POST
CSF	COMBINED SCALE FACTOR
EHPA	ESTIMATED HORIZONTAL POSITIONAL ACCURACY
(b)	BURIED

NOTE: THIS PLAN SHOWS ONE OR MORE WITNESS POSTS WHICH ARE NOT SET ON THE TRUE CORNER(S).

GEOREFERENCING POSITIONS				
UTM COORDINATES, ZONE 10, NAD 83 (CSRS), 4.0.0.BC.1				
STATION	NORTHING	EASTING	EHPA	CSF
PL'IP'A'	5975873.50	516810.14	0.12m	0.9995161
Fd.IP'B'	5976114.10	516955.33	0.12m	0.9995161



THE ASSOCIATION OF BC LAND SURVEYORS HAS GRANTED RELIEF FROM COMPLIANCE WITH CSI RULE 5.4(2) FOR THIS SURVEY SINCE THE STANDARD DEVIATIONS OF THE ISA MONUMENTS DO NOT MEET THE REQUIREMENTS OF SAID RULE.

THE FIELD SURVEY REPRESENTED BY THIS PLAN WAS COMPLETED ON THE 27th DAY OF MARCH, 2017  
SHAUNA C. GOERTZEN, BCLS 798

THIS PLAN LIES WITHIN THE REGIONAL DISTRICT OF FRASER-FORT GEORGE.

**McElhanney**  
 McELHANNEY ASSOCIATES  
 LAND SURVEYING LTD.  
 Suite 12  
 555 North Nachako Road  
 Prince George BC  
 Canada V2K 1A1  
 Tel 250 561 2229  
 File No. 2341-6535-RC