

CITY OF PRINCE GEORGE
BYLAW NO. 8988

A Bylaw of the City of Prince George to permanently close a portion of road located near the intersection of Marleau Road and O'Grady Road to remove its highway dedication for the purpose of future disposal of the lands.

WHEREAS the Council of the City of Prince George deems it desirable that an approximate 1620 square meters (.162 hectares) of road dedicated on Plan 9567 be closed to traffic, and that the highway dedication thereof be removed;

AND WHEREAS, in accordance with section 40 of the *Community Charter*, notice of intention to adopt this bylaw has been delivered, posted and published, and an opportunity has been provided for persons who consider they are affected by this bylaw to make representations to Council;

NOW THEREFORE the Council of the City of Prince George, in open meeting assembled, **ENACTS AS FOLLOWS:**

1. That the portion of highway dedicated on Plan 9567, as shown outlined in bold black on Reference Plan EPP86922 attached hereto as Appendix "A" and forming part of this Bylaw, is closed to traffic.
2. That the dedication of the portion of highway dedicated by Plan 9567, District Lot 2003, Cariboo District, as shown outlined in bold black on Reference Plan EPP86922, attached hereto as Appendix "A" and forming part of this Bylaw, is removed.
3. The Mayor and Corporate Officer are hereby empowered to do all things necessary to give effect to this Bylaw.
4. This Bylaw shall come into full force and take effect upon its adoption and shall be filed with the Registrar of the applicable Land Title Office.
5. This Bylaw may be cited for all purposes as "Marleau Road - O'Grady Road Road Closure Bylaw No. 8988, 2018".

READ A FIRST TIME THIS 26 DAY OF NOVEMBER 2018


READ A SECOND TIME THIS 26 DAY OF NOVEMBER 2018

First two readings passed by a UNANIMOUS decision of Member of City Council present and eligible to vote.

READ A THIRD TIME THIS 10 DAY OF DECEMBER 2018

Third reading passed by a UNANIMOUS decision of Member of City Council present and eligible to vote.

Certified correct as passed third reading this 12th day of DECEMBER 2018


CORPORATE OFFICER OF
THE CITY OF PRINCE GEORGE

APPROVED BY THE MINISTER OF TRANSPORTATION AND INFRASTRUCTURE PURSUANT TO THE PROVISIONS OF SECTION 41(3) OF THE COMMUNITY CHARTER

THIS 18th DAY OF December 2018


for MINISTER OF TRANSPORTATION
AND INFRASTRUCTURE

ADOPTED THIS 7 DAY OF JANUARY 2018,
BY A UNANIMOUS DECISION OF ALL MEMBERS OF CITY COUNCIL PRESENT AND ELIGIBLE TO VOTE


MAYOR


CORPORATE OFFICER

**REFERENCE PLAN OF ROAD CLOSURE TO ACCOMPANY BY-LAW No. 8988,
(PRINCE GEORGE) CLOSING A PORTION OF ROAD DEDICATED ON PLAN 9567,
DISTRICT LOT 2003, CARIBOO DISTRICT.**

PURSUANT TO SECTION 120 OF THE LAND TITLE ACT AND
SECTION 40 OF THE COMMUNITY CHARTER.

INTEGRATED SURVEY AREA No. 39 PRINCE GEORGE, BC, MADS (CSRS) 4.0.0.BC.1
BCGS 9836.087



THE INTENDED PLOT SIZE OF THIS PLAN IS 850mm IN WIDTH BY 420mm IN
HEIGHT (C SIZE) WHEN PLOTTED AT A SCALE OF 1:1000.

ALL DISTANCES ARE IN METRES AND DECIMALS THEREOF.

GRID BEARINGS ARE DERIVED FROM OBSERVATIONS BETWEEN GEODETIC
CONTROL MONUMENTS 88H1861 AND 88H1708.

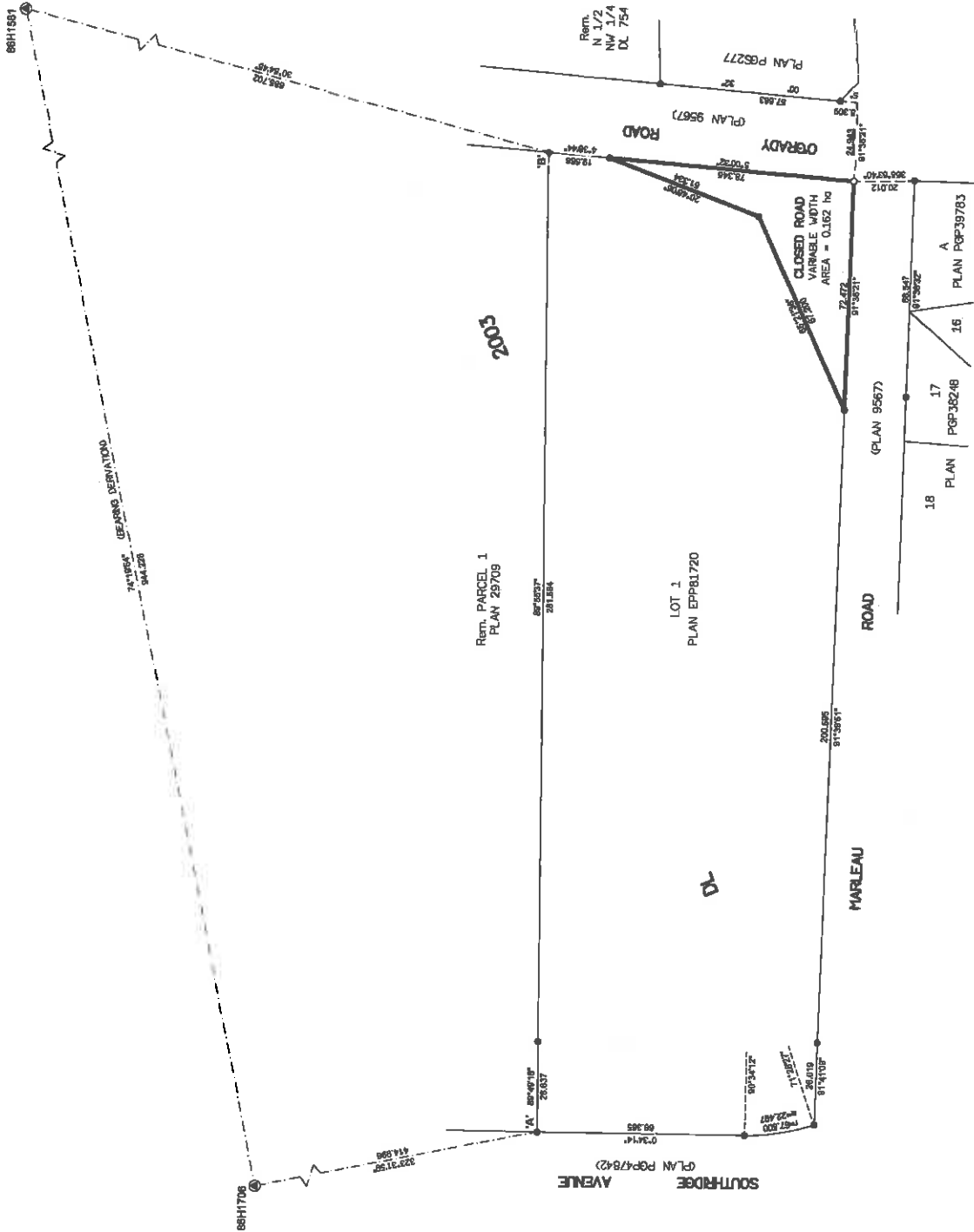
THE UTM COORDINATES AND ESTIMATED HORIZONTAL POSITIONAL
ACCURACY ACHIEVED HAVE BEEN DERIVED FROM MASCOT PUBLISHED
GROUND-LEVEL DISTANCES OF THE CONTROL MONUMENTS 88H1861
AND 88H1708.

THIS PLAN SHOWS HORIZONTAL GROUND-LEVEL DISTANCES UNLESS
OTHERWISE SPECIFIED. UTM GRID DISTANCES, MULTIPLY
GROUND-LEVEL DISTANCES BY THE SCALE FACTOR OF
0.99993310 WHICH HAS BEEN DERIVED FROM CONTROL MONUMENTS 88H1861
AND 88H1708.

LEGEND

SYMBOLS	DESCRIPTION
○	FOUND PLACED
●	CONTROL MONUMENT
○	STANDARD IRON POST
○	CSF
○	COMBINED SCALE FACTOR
○	ESTIMATED HORIZONTAL POSITIONAL ACCURACY
○	EHPA

GEOREFERENCING POSITIONS				
UTM COORDINATES, ZONE 18, MAD 8E (CSRS), 4.0.0.BC.1				
STATION	NORTHING	EASTING	EHPA	CSF
FLIPPA	888314.21	814225.71	0.12	0.9999088
FLIPPW	888333.10	814242.84	0.11	0.9999235



Maslmanney
MASLMANNEY ASSOCIATES
LAND SURVEYING LTD.
Suite 12
500 North Westside Road
Prince George, BC
Canada, V0R 1R2
Tel: 250 871 2220
Fax: 250 871 2220

THE FIELD SURVEY REPRESENTED BY THIS PLAN WAS COMPLETED
ON THE 28th DAY OF SEPTEMBER, 2018
SHAMKA C. GOERTZEN, BCLS 718

THIS PLAN LIES WITHIN THE REGIONAL DISTRICT OF FRASER-FORT GEORGE.

