

CITY OF PRINCE GEORGE
BYLAW NO. 8639

A City of Prince George Bylaw to close a portion of dedicated highway and to dispose of the lands.

WHEREAS, pursuant to Section 40 of the *Community Charter* S.B.C. 2003, c. 26, Council may by bylaw close a portion of a highway to traffic and remove highway dedication;

AND WHEREAS, pursuant to “City of Prince George Officer Positions and Delegation of Authority Bylaw No. 8340, 2011” the City of Prince George has approved the sale of an approximate 0.186 ha (4.60 acre) portion of road, dedicated by Plan H881, District Lot 2166, Cariboo District, as shown on Appendix “A”;

AND WHEREAS, Council wishes to repeal and replace “746 PG Pulpmill Rd Road Closure Bylaw No. 8594, 2014”;

AND WHEREAS, in accordance with section 40 of the *Community Charter*, notice of intention to adopt this bylaw has been delivered, posted and published, and an opportunity has been provided for persons who consider they are affected by the Bylaw to make representation to Council;

NOW THEREFORE the Council of the City of Prince George, in open meeting assembled, **ENACTS AS FOLLOWS:**

1. That the portion of highway that is dedicated as road on Plan H881, adjacent to Lot A, District Lot 2166, Cariboo District, Plan BCP10526 as shown outlined in bold black on the reduced copy of “Reference Plan to accompany Bylaw No. 8639, City of Prince George to close part dedicated road on Plan H881, District Lot 2166, Cariboo District”, referred to as Appendix “A”, attached to and forming part of this bylaw, is closed to traffic.
2. That the portion of highway lands dedicated as road on Plan H881, adjacent to Lot A, District Lot 2166, Cariboo District, Plan BCP10526 as shown outlined in bold black on the reduced copy of “Reference Plan to accompany Bylaw No. 8639, City of Prince George to close part dedicated road on Plan H881, District Lot 2166, Cariboo District”, referred to as Appendix “A”, attached to and forming part of this bylaw, is removed.
3. That prior to adoption, notice of intention to adopt this bylaw shall be published once a week for two consecutive weeks in a newspaper circulating in the municipality.
4. That the Mayor and Corporate Officer are hereby empowered to do all things necessary to give effect to this Bylaw.
5. This Bylaw shall come into full force and take effect upon its adoption and shall be filed with the Registrar of the applicable Land Title Office.
6. “746 PG Pulpmill Rd Road Closure Bylaw No. 8594, 2014” is hereby repealed.

7. This Bylaw may be cited for all purposes as "746 PG Pulpmill Rd Road Closure Bylaw No. 8639, 2015".

READ A FIRST TIME THIS 5th DAY OF JANUARY , 2015.

READ A SECOND TIME THIS 5th DAY OF JANUARY , 2015.

First Two readings passed by a unanimous decision of Members of City Council present and eligible to vote.

READ A THIRD TIME THIS 19th DAY OF JANUARY , 2015.

Third Reading passed by a unanimous decision of Members of City Council present and eligible to vote.

Certified correct as passed Third Reading, this 20th day of January , 2015.



DEPUTY CORPORATE OFFICER OF THE CITY OF PRINCE GEORGE

APPROVED BY THE MINISTER OF TRANSPORTATION AND INFRASTRUCTURE PURSUANT TO THE PROVISIONS OF SECTION 41(3) OF THE COMMUNITY CHARTER THIS THE 20th DAY OF February , 2015.



for MINISTER OF TRANSPORTATION AND INFRASTRUCTURE

ADOPTED THIS 2nd DAY OF MARCH , 2015, BY A unanimous DECISION OF ALL MEMBERS OF CITY COUNCIL PRESENT AND ELIGIBLE TO VOTE.



MAYOR



CORPORATE OFFICER

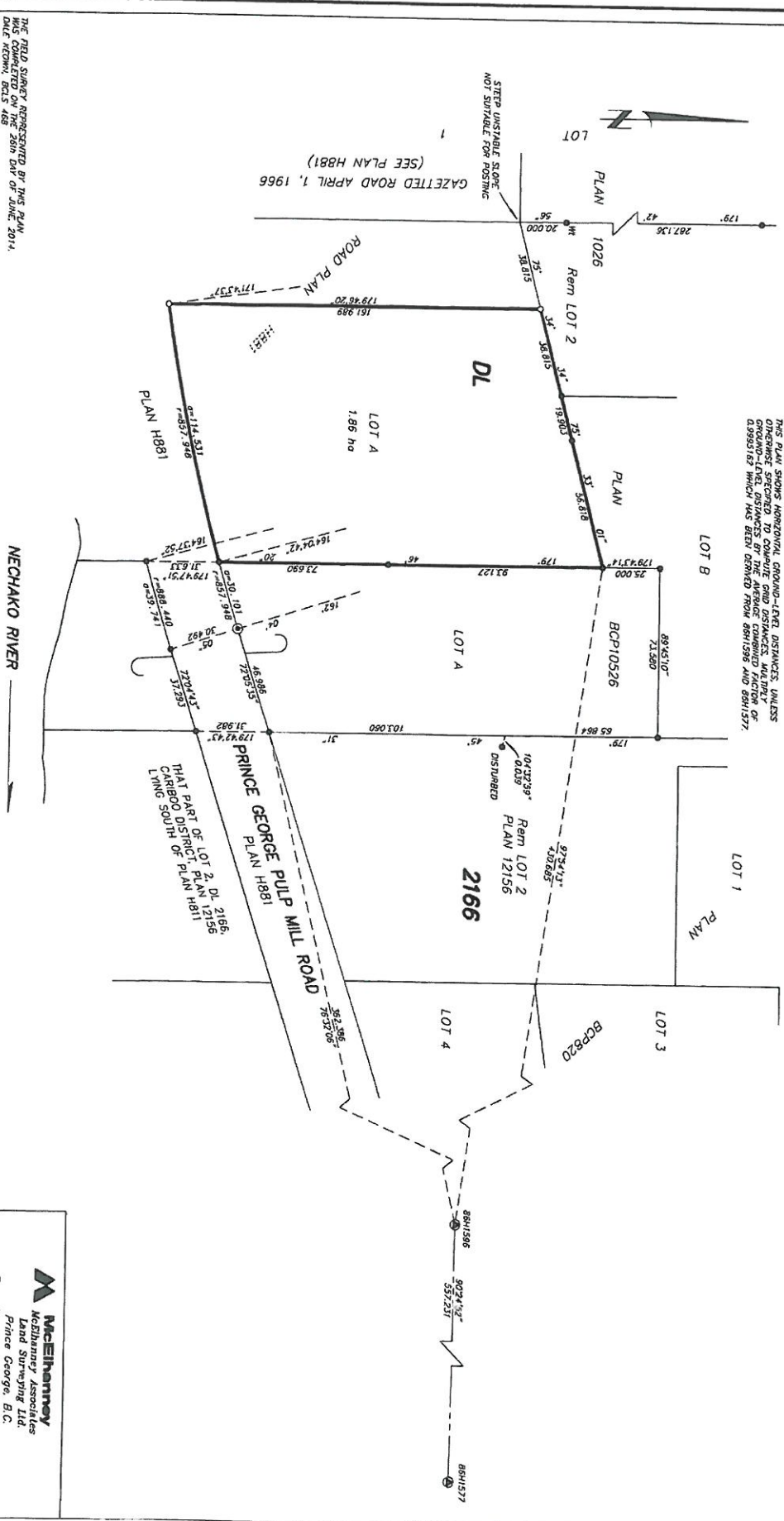
PLAN EPP43657

REFERENCE PLAN TO ACCOMPANY BYLAW NO. 8639,
 CITY OF PRINCE GEORGE, TO CLOSE PART DEDICATED ROAD
 ON PLAN H881, DISTRICT LOT 2166, CARIBOO DISTRICT.
 PURSUANT TO SECTION 120 OF THE LAND TITLE ACT AND SECTION 40 OF THE COMMUNITY CHARTER.
 BCOS 936,087

INTEGRATED SURVEY AREA NO. 38, PRINCE GEORGE, 2003 (CSRS)
 THE INTENDED PLOT SIZE OF THIS PLAN IS 566m² IN AREA, BY
 43mm IN HEIGHT (G. SIZE) WHEN PLOTTED AT A SCALE OF 1:1250
 20m 0 20 40 60 80m
 ALL DISTANCES ARE HORIZONTAL GROUND-LEVEL AND ARE SHOWN
 IN METRES AND DECIMALS THEREOF, UNLESS OTHERWISE INDICATED.
 GRID BEARINGS ARE DERIVED FROM OBSERVATIONS BETWEEN
 CONTROL MONUMENTS 88H1596 AND 88H1577.

- LEGEND
- CONTROL MONUMENT FOUND
 - STANDING CONCRETE POST FOUND
 - STANDING IRON POST FOUND
 - STANDARD IRON POST PLACED

NOTE: THIS PLAN SHOWS ONE OR MORE WITNESS POSTS
 WHICH ARE NOT SET ON THE TRUE CORNERS.
 THIS PLAN SHOWS HORIZONTAL GROUND-LEVEL DISTANCES, UNLESS
 OTHERWISE SPECIFIED. DISTANCES ON THE PLAN ARE THE AVERAGE
 GROUND-LEVEL DISTANCES BY THE AVERAGE CORNERS OF
 039903168 WHICH HAS BEEN DERIVED FROM 88H1596 AND 88H1577.



McElhinney
 McElhinney Associates
 Land Surveying Ltd.
 Prince George, B.C.
 E-mail: pgrnls@mcElhinney.com
 Ph: (250) 561-2229 Fax: (250) 563-1941
 DL - 2166 File No. - 8207-BL

THIS PLAN LIES WITHIN THE REGIONAL DISTRICT OF FRASER - FORT GEORGE.
 THE PLOTTING REPRESENTED BY THIS PLAN
 WAS COMPLETED ON 28th DAY OF JUNE, 2014.
 DATE REVISION, DECS 488