

CITY OF PRINCE GEORGE
BYLAW NO. 9107, 2020

A Bylaw of the City of Prince George to permanently close a portion of road located adjacent to 4087 Brink Place and to remove its highway dedication for the purpose of future disposal of the lands.

WHEREAS the Council of the City of Prince George deems it desirable that an approximate 241.3 m² of road dedicated on Plans EPP53690 and PGP41961, adjacent to the property legally described as Lot 3, District Lots 4221 and 4376, Cariboo District, Plan EPP53690, as shown on Reference Plan EPP101604, be closed to traffic, and that the highway dedication thereof be removed;

AND WHEREAS, in accordance with section 40 of the *Community Charter*, notice of intention to adopt this bylaw has been delivered, posted and published, and an opportunity has been provided for persons who consider they are affected by this bylaw to make representations to Council;

NOW THEREFORE the Council of the City of Prince George, in open meeting assembled, **ENACTS AS FOLLOWS:**

1. That the portions of highway dedicated on Plans EPP53690 and PGP41961, adjacent to the property legally described as Lot 3, District Lots 4221 and 4376, Cariboo District, Plan EPP53690, as shown outlined in bold black on the proposed Reference Plan EPP101604, attached hereto as Appendix "A" and forming part of this Bylaw, is closed to traffic.
2. That the portions of highway dedicated on Plans EPP53690 and PGP41961, adjacent to the property legally described as Lot 3, District Lots 4221 and 4376, Cariboo District, Plan EPP53690, as shown outlined in bold black on the proposed Reference Plan EPP101604, attached hereto as Appendix "A" and forming part of this Bylaw, is removed.
3. The Mayor and Corporate Officer are hereby empowered to do all things necessary to give effect to this Bylaw.
4. This Bylaw shall come into full force and take effect upon its adoption and shall be filed with the Registrar of the applicable Land Title Office.
5. This Bylaw may be cited for all purposes as "City of Prince George 4087 Brink Place Road Closure Bylaw No. 9107, 2020".

READ A FIRST TIME THIS **11TH** DAY OF **MAY** , 2020.

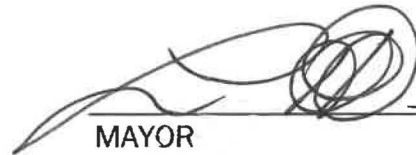
READ A SECOND TIME THIS **11TH** DAY OF **MAY** , 2020.

First two readings passed by a **UNANIMOUS** decision of Members of City Council present and eligible to vote.

READ A THIRD TIME THIS **25TH** DAY OF **MAY**, 2020.

Third reading passed by a **UNANIMOUS** decision of Members of City Council present and eligible to vote.

ADOPTED THIS **25th** DAY OF **MAY**, 2020,
BY A **UNANIMOUS** DECISION OF ALL MEMBERS OF CITY COUNCIL PRESENT AND ELIGIBLE TO VOTE.


MAYOR


CORPORATE OFFICER

**REFERENCE PLAN TO ACCOMPANY BY-LAW
NUMBER 9107, 2020 (PRINCE GEORGE)
TO CLOSE A PORTION OF ROAD SHOWN
DEDICATED ON PLANS EPP53690 AND
PGP41961, ALL IN DISTRICT LOT 4221,
CARIBOO DISTRICT.**

PLAN EPP101604

PURSUANT TO SECTION 120 OF THE LAND TITLE ACT
AND SECTION 40 OF THE COMMUNITY CHARTER.

THIS PLAN LIES WITHIN INTEGRATED SURVEY AREA
No. 39 PRINCE GEORGE, BC, NAD83 (CSRS) 4.0.0.BC.1

BCGS 93G.097



THE INTENDED PLOT SIZE OF THIS PLAN IS 280mm IN WIDTH
BY 432mm IN HEIGHT (B SIZE) WHEN PLOTTED AT A SCALE
OF 1:400.

ALL DISTANCES ARE IN METRES AND DECIMALS
THEREOF.

GRID BEARINGS ARE DERIVED FROM
OBSERVATIONS TO GEODETIC CONTROL
MONUMENT 86H1775 AND 86H1759.

THE UTM COORDINATES AND ESTIMATED
ABSOLUTE ACCURACY ACHIEVED HAVE
BEEN DERIVED FROM MASCOT PUBLISHED
COORDINATES AND STANDARD DEVIATIONS
FOR GEODETIC CONTROL MONUMENT 86H1775.

THIS PLAN SHOWS HORIZONTAL
GROUND-LEVEL DISTANCES UNLESS
OTHERWISE SPECIFIED.
TO COMPUTE GRID DISTANCES, MULTIPLY
GROUND-LEVEL DISTANCES BY THE
COMBINED FACTOR OF 0.9985080 WHICH
HAS BEEN DERIVED FROM GEODETIC
CONTROL MONUMENT 86H1775.

NOTE:
THIS PLAN SHOWS ONE OR MORE
WITNESS POSTS WHICH ARE NOT
SET ON THE TRUE CORNER(S).

SOME POSTS AND LINES ARE
EXAGGERATED FOR CLARITY.

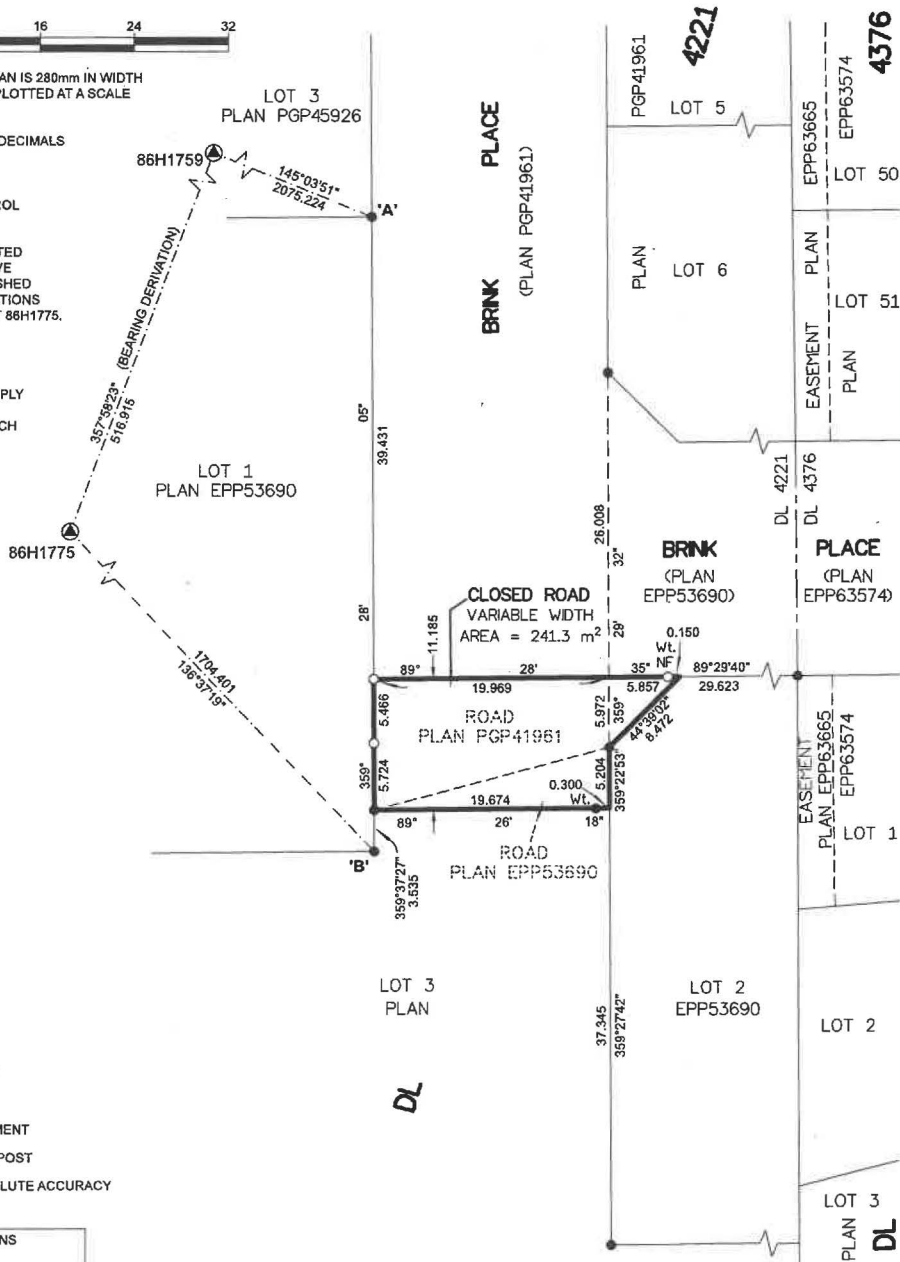
LEGEND

SYMBOLS	DESCRIPTION
FOUND	PLACED
	CONTROL MONUMENT
	STANDARD IRON POST
EAA	ESTIMATED ABSOLUTE ACCURACY

GEOREFERENCING POSITIONS UTM COORDINATES, ZONE 10, NAD 83 (CSRS), 4.0.0.BC.1			
STATION	NORTHING	EASTING	EAA
Fd. IP 'A'	5977160.89	513389.07	0.09
Fd. IP 'B'	5977106.87	513389.56	0.09

THE FIELD SURVEY REPRESENTED BY THIS PLAN WAS COMPLETED
ON THE 27th DAY OF MARCH, 2020
SHAUNA C. GOERTZEN, BCLS 798

THIS PLAN LIES WITHIN THE REGIONAL DISTRICT OF FRASER-FORT GEORGE.



McElhanney
McELHANNEY ASSOCIATES
LAND SURVEYING LTD.
Suite 12
558 North Nechako Road
Prince George BC
Canada V2K 1A1
Tel 250 561 2229

File No. 2341-6708-RC