

CITY OF PRINCE GEORGE

BYLAW NO. 8397

A Bylaw of the City of Prince George to stop up and close to traffic a portion of highway and remove its highway dedication with the intent to sell it in the future.

WHEREAS, pursuant to "City of Prince George Officer Positions and Delegation of Authority Bylaw No. 8340, 2011" the City of Prince George has, subject to adoption of this Bylaw, approved the sale of an approximate 0.561 ac (0.227 ha) portion of highway situated adjacent to Lot A, District Lot 343, Cariboo District, Plan PGP35522, as shown on the attached Appendix "A"; to facilitate a future sale of the property;

AND WHEREAS the Council of the City of Prince George deems it desirable that said portion of highway be stopped up and closed to traffic, and that the highway dedication thereof be removed;

AND WHEREAS, in accordance with section 40 of the *Community Charter*, notice of intention to adopt this bylaw has been delivered, posted and published, and an opportunity has been provided for persons who consider they are affected by the Bylaw to make representation to Council;

AND WHEREAS, in accordance with section 41(3) of the *Community Charter*, because the portion of highway to be closed is located within 800 metres of an arterial highway, the Ministry of Transportation and Infrastructure's approval must be received prior to adoption of this Bylaw.

NOW THEREFORE the Council of the City of Prince George, in open meeting assembled, **ENACTS AS FOLLOWS:**

1. That the portion of highway that is dedicated as road on Plan 1268, adjacent to Lot A, District Lot 343, Cariboo District, Plan PGP35522, as shown in heavy black outline on the drawing attached hereto as Appendix "A" and forming part of this bylaw, is hereby stopped up and closed to traffic.
2. That the dedication of that portion of highway dedicated as road on Plan 1268 adjacent to Lot A, District Lot 343, Cariboo District, Plan PGP35522, as shown in heavy black outline on the drawing attached hereto as Appendix "A" and forming part of this bylaw, is hereby removed.
3. That prior to adoption, notice of intention to adopt this bylaw shall be published once a week for two consecutive weeks in a newspaper circulating in the municipality.
4. That the Mayor and Corporate Officer are hereby empowered to do all things necessary to give effect to this Bylaw.
5. This Bylaw shall come into full force and take effect upon its adoption and shall be filed with the Registrar of the applicable Land Title Office.

6. This Bylaw may be cited for all purposes as "10th Avenue and Patricia Boulevard Road Closure Bylaw No. 8397, 2012".

READ A FIRST TIME THIS THE **16th** DAY OF **APRIL**, **2012**.

READ A SECOND TIME THIS THE **16th** DAY OF **APRIL**, **2012**.

First Two readings passed by a **unanimous** decision of Members of City Council present and eligible to vote.

READ A THIRD TIME THIS THE **28th** DAY OF **MAY**, **2012**.

Third Reading passed by a **unanimous** decision of Members of City Council present and eligible to vote.

Certified correct as passed Third Reading, this the **1st** day of **June**, **2012**.

Walter Babicz
CORPORATE OFFICER OF
THE CITY OF PRINCE GEORGE

APPROVED BY THE MINISTER OF TRANSPORTATION AND INFRASTRUCTURE PURSUANT TO THE PROVISIONS OF SECTION 41(3) OF THE COMMUNITY CHARTER THIS THE **19th** DAY OF **JUNE**, **2012**.

Kristen Johnson
for MINISTER OF TRANSPORTATION
AND INFRASTRUCTURE

ADOPTED THIS THE **16th** DAY OF **JULY**, **2012**, BY A **UNANIMOUSLY** DECISION OF ALL MEMBERS OF CITY COUNCIL PRESENT AND ELIGIBLE TO VOTE.


MAYOR


D/CORPORATE OFFICER

5. This Bylaw shall come into full force and take effect upon its adoption and shall be filed with the Registrar of the applicable Land Title Office.

6. This Bylaw may be cited for all purposes as "10th Avenue and Patricia Boulevard Road Closure Bylaw No. 8397, 2012".

READ A FIRST TIME THIS THE 16th DAY OF APRIL, 2012.

READ A SECOND TIME THIS THE 16th DAY OF APRIL, 2012.

First Two readings passed by a unanimous decision of Members of City Council present and eligible to vote.

READ A THIRD TIME THIS THE 28th DAY OF MAY, 2012.

Third Reading passed by a unanimous decision of Members of City Council present and eligible to vote.

Certified correct as passed Third Reading, this the 1st day of June, 2012.


CORPORATE OFFICER OF
THE CITY OF PRINCE GEORGE

APPROVED BY THE MINISTER OF TRANSPORTATION AND INFRASTRUCTURE PURSUANT TO THE PROVISIONS OF SECTION 41(3) OF THE COMMUNITY CHARTER THIS THE 19th DAY OF June, 2012.


for MINISTER OF TRANSPORTATION
AND INFRASTRUCTURE

ADOPTED THIS THE DAY OF, 2012, BY A DECISION OF ALL MEMBERS OF CITY COUNCIL PRESENT AND ELIGIBLE TO VOTE.

MAYOR

CORPORATE OFFICER

**REFERENCE PLAN TO ACCOMPANY BYLAW NO. 8397
CITY OF PRINCE GEORGE TO CLOSE ROAD DEDICATED
BY PLAN 1268, ADJACENT TO LOT A, PLAN PGP35522,
BOTH IN DL 343, CARIBOO DISTRICT.**

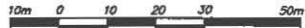
PLAN EPP18028

BCGS 93G.097

PURSUANT TO SECTION 120 OF THE LAND TITLE ACT
AND SECTION 40 OF THE COMMUNITY CHARTER.

THIS PLAN LIES WITHIN INTEGRATED SURVEY
AREA No. 39, PRINCE GEORGE, NAD83 (CSRS)

THE INTENDED PLOT SIZE OF THIS PLAN IS 560mm IN WIDTH BY
432mm IN HEIGHT (C SIZE) WHEN PLOTTED AT A SCALE OF 1:750



ALL DISTANCES ARE SHOWN IN METRES AND
DECIMALS THEREOF, UNLESS OTHERWISE INDICATED.

LEGEND

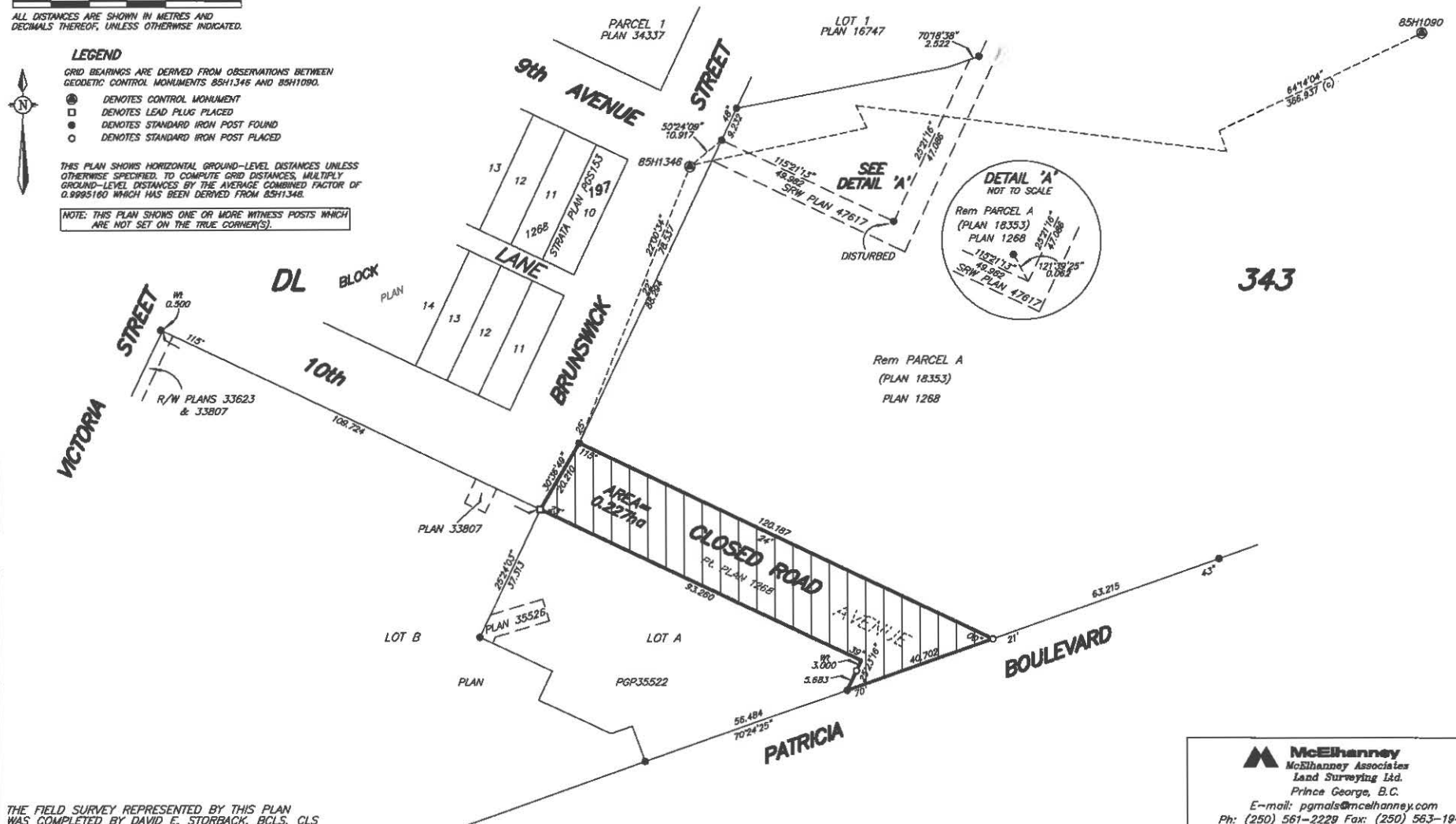
GRID BEARINGS ARE DERIVED FROM OBSERVATIONS BETWEEN
GEODETIC CONTROL MONUMENTS 85H1346 AND 85H1090.

- DENOTES CONTROL MONUMENT
- DENOTES LEAD PLUG PLACED
- DENOTES STANDARD IRON POST FOUND
- DENOTES STANDARD IRON POST PLACED

THIS PLAN SHOWS HORIZONTAL GROUND-LEVEL DISTANCES UNLESS
OTHERWISE SPECIFIED. TO COMPUTE GRID DISTANCES, MULTIPLY
GROUND-LEVEL DISTANCES BY THE AVERAGE COMBINED FACTOR OF
0.9995160 WHICH HAS BEEN DERIVED FROM 85H1346.

NOTE: THIS PLAN SHOWS ONE OR MORE WITNESS POSTS WHICH
ARE NOT SET ON THE TRUE CORNER(S).

Appendix "A" to Bylaw No. 8397, 2012



THE FIELD SURVEY REPRESENTED BY THIS PLAN
WAS COMPLETED BY DAVID E. STORBACK, BCLS, CLS
ON THE 20th DAY OF DECEMBER, 2011.

THIS PLAN LIES WITHIN THE REGIONAL DISTRICT OF FRASER - FORT GEORGE.

McElhanney
McElhanney Associates
Land Surveying Ltd.
Prince George, B.C.

E-mail: pgmals@mcElhanney.com
Ph: (250) 561-2229 Fax: (250) 563-1941

DL-343	File No. -5972RC
CPG FILE NO. 1119	