

CITY OF PRINCE GEORGE
BYLAW NO. 9194, 2021

A Bylaw of the City of Prince George to permanently close a portion of road located adjacent to 1655 Boundary Road and to remove its road dedication for the purpose of future disposal of the lands.

WHEREAS the Council of the City of Prince George deems it desirable that an approximate 0.231 ha (hectares) of road dedicated on Plan 902, as shown on Reference Plan EPP110462, adjacent to the properties legally described as Lots 1- 10, Block 45, District Lot 629; Lots 44 - 48, Block 45, District Lot 629; and Parcel 1, District Lot 629, Plan PGP36552 be closed to traffic, and that the road dedication thereof be removed;

AND WHEREAS, in accordance with section 40 of the *Community Charter*, notice of intention to adopt this Bylaw has been delivered, posted and published, and an opportunity has been provided for persons who consider they are affected by this Bylaw to make representations to Council;

NOW THEREFORE the Council of the City of Prince George, in open meeting assembled, **ENACTS AS FOLLOWS:**

1. That the portion of road dedicated on Plan 902, adjacent to the properties legally described as Lots 1 – 10, Block 45, District Lot 629; Lots 44 - 48, Block 45, District Lot 629; and Parcel 1, District Lot 629, Plan PGP36552 as shown outlined in bold black on the Reference Plan EPP110462, attached hereto as Appendix “A” and forming part of this Bylaw, is closed to traffic.
2. That the portion of road dedicated on Plan 902, adjacent to the properties legally described as Lots 1 – 10, Block 45, District Lot 629; Lots 44 - 48, Block 45, District Lot 629; and Parcel 1, District Lot 629, Plan PGP36552 as shown outlined in bold black on the Reference Plan EPP110462 attached hereto as Appendix “A” and forming part of this Bylaw, is removed.
3. The Mayor and Corporate Officer are hereby empowered to do all things necessary to give effect to this Bylaw.
4. This Bylaw shall come into full force and take effect upon its adoption and shall be filed with the Registrar of the applicable Land Title Office.
5. This Bylaw may be cited for all purposes as "City of Prince George 1655 Boundary Road Road Closure Bylaw No. 9194, 2021".

READ A FIRST TIME THIS 4TH DAY OF OCTOBER , 2021.

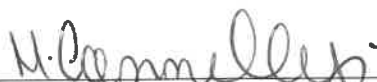
READ A SECOND TIME THIS 4TH DAY OF OCTOBER , 2021.

First two readings passed by a **UNANIMOUS** decision of Members of City Council present and eligible to vote.

READ A THIRD TIME THIS **8TH** DAY OF **NOVEMBER**, 2021.


Third reading passed by a **UNANIMOUS** decision of Members of City Council present and eligible to vote.

Certified correct as passed third reading this **9TH** day of **NOVEMBER**, 2021.


CORPORATE OFFICER OF
THE CITY OF PRINCE GEORGE

APPROVED BY THE MINISTER OF TRANSPORTATION AND INFRASTRUCTURE PURSUANT TO THE PROVISIONS OF SECTION 41(3) OF THE COMMUNITY CHARTER.

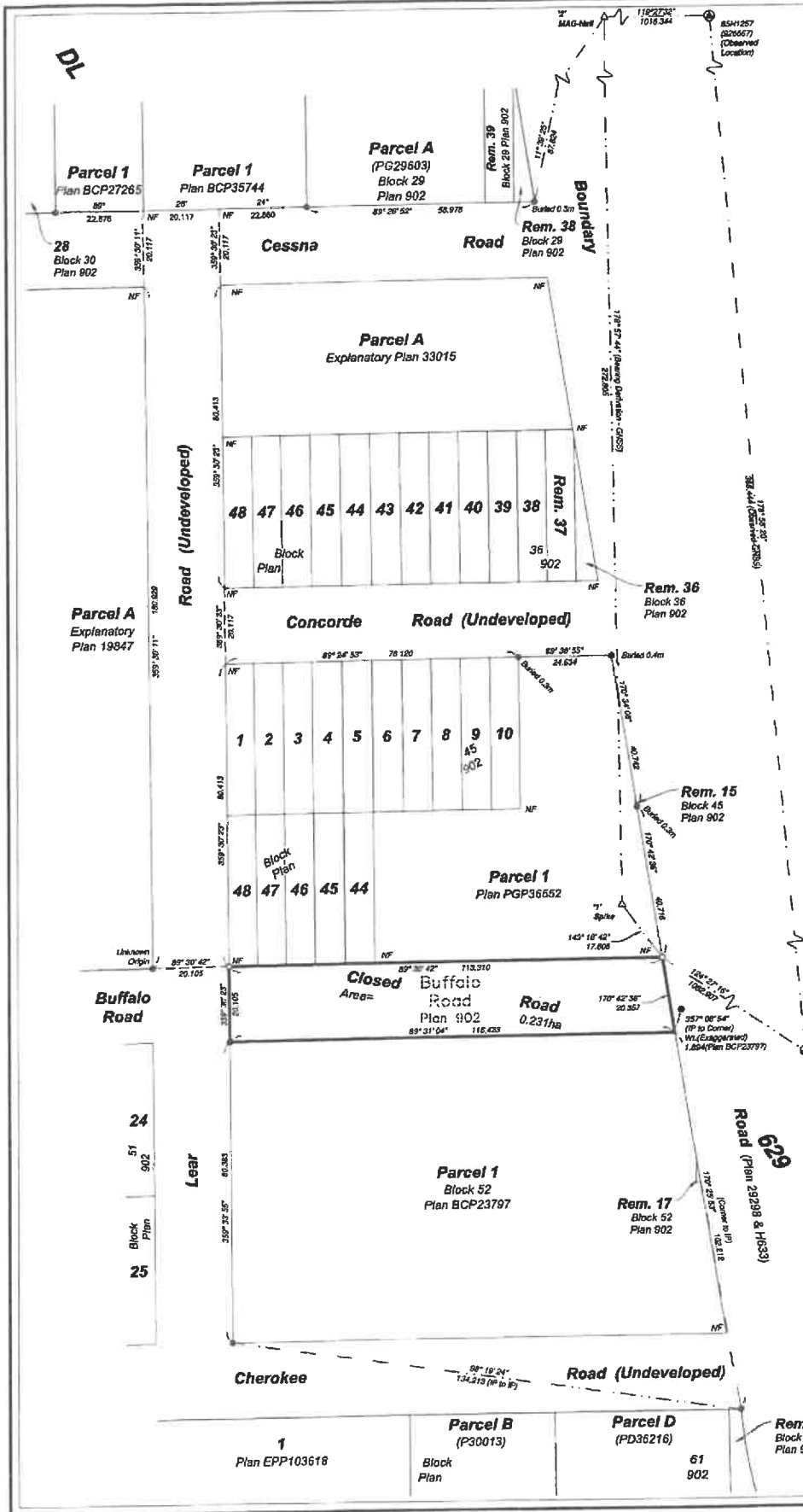
THIS **1ST** DAY OF **DECEMBER**, 2021.


FOR MINISTER OF TRANSPORTATION
AND INFRASTRUCTURE

ADOPTED THIS **20TH** DAY OF **DECEMBER**, 2021,
BY A **UNANIMOUS** DECISION OF ALL MEMBERS OF CITY COUNCIL PRESENT AND ELIGIBLE TO VOTE.


MAYOR


CORPORATE OFFICER



Reference Plan to Accompany By-law No. 9194 Closing a Portion of Road Shown Dedicated on Plan 902, District Lot 629, Cariboo District.

Pursuant to Section 120 of the Land Title Act and Section 40 of the Community Charter Integrated survey area No. 39 Prince George, BC, NAD83 (CSRS) 4.0.0.BC.1

BCGS 93G.097



The intended plot size of this plan is 432mm in width by 567mm in height (C size) when plotted at a scale of 1:750.

All distances are in metres and decimals thereof.

Grid bearings are derived from GNSS observations and are referred to the central meridian of UTM Zone 10 North (113° west longitude).

This plan shows horizontal ground-level distances unless otherwise specified. To compute grid distances, multiply ground-level distances by the combined factor of 0.9995004 which has been derived by single point positioning techniques using the precise point positioning (PPP) services of Newell Research Canada.

The UTM coordinates and estimated absolute accuracy shown on this plan are a result of an independent and accurate GNSS survey. Positions for Geodetic Control Monuments which are calculated from information on this plan may not agree with official published coordinates.

Note: This plan shows one or more witness posts which are not set on the true centre(s). Some posts are exaggerated for clarity.

Legend

Symbol	Description
Found Placed	
⊙	Control Monument
●	Standard Iron Post
△	Traverse Hub
CSF	Combined Scale Factor
EAA	Estimated Absolute Accuracy
MAG	MAG Concrete Nail

Georeferencing Positions UTM Coordinates, Zone 10, NAD 83 (CSRS), 2002.0				
Station	Northing	Easting	EAA	CSF
1	5972878.41	527005.11	0.04	0.9995004
2	5973151.04	527081.77	0.04	0.9995001



The field survey represented by this plan was completed on the 12th day of April, 2021.
Albert Koehler, BCLS 874
This plan lies within the City of Prince George
This plan lies within the Regional District of Fraser-Fort George

File: 210907-21033-RC-R1
KOEHLER LAND SURVEYING INC.
1628 Lyon Street South
Prince George, BC V2N 1T3
Tel: (250) 614-9703