

CITY OF PRINCE GEORGE

BYLAW NO. 8508

A Bylaw of the City of Prince George to stop up and close to traffic a portion of highway and remove its highway dedication with the intent to sell it in the future.

WHEREAS, pursuant to "City of Prince George Officer Positions and Delegation of Authority Bylaw No. 8340, 2011" the City of Prince George has, subject to adoption of this Bylaw, approved the sale of an approximate .299 ha (2990 sq. metre) portion of road adjacent to 110 PG Pulpmill Road, dedicated by Plan 18606, District Lot 2440, Cariboo District, as shown on the attached Schedule "A", to facilitate a future sale of the property;

AND WHEREAS the Council of the City of Prince George deems it desirable that said portion of highway be stopped up and closed to traffic, and that the highway dedication thereof be removed;

AND WHEREAS, in accordance with section 40 of the *Community Charter*, notice of intention to adopt this bylaw has been delivered, posted and published, and an opportunity has been provided for persons who consider they are affected by the Bylaw to make representation to Council;

AND WHEREAS, in accordance with section 41(3) of the *Community Charter*, because the portion of highway to be closed is located within 800 metres of an arterial highway, the Ministry of Transportation and Infrastructure's approval must be received prior to adoption of this Bylaw.

NOW THEREFORE the Council of the City of Prince George, in open meeting assembled, **ENACTS AS FOLLOWS:**

1. That the portion of highway that is dedicated as road on Plan 18606, adjacent to Parcel 1, District Lot 2440, Cariboo District, Plan 28099, as shown in heavy black outline on the reference plan attached hereto as Schedule "A" and forming part of this bylaw, is hereby stopped up and closed to traffic.
2. That the dedication of that portion of highway dedicated as road on Plan 18606 adjacent to Parcel 1, District Lot 2440, Cariboo District, Plan 28099, as shown in heavy black outline on the reference plan attached hereto as Schedule "A" and forming part of this bylaw, is hereby removed.
3. That prior to adoption, notice of intention to adopt this bylaw shall be published once a week for two consecutive weeks in a newspaper circulating in the municipality.
4. That the Mayor and Corporate Officer are hereby empowered to do all things necessary to give effect to this Bylaw.

- 5. This Bylaw shall come into full force and take effect upon its adoption and shall be filed with the Registrar of the applicable Land Title Office.
- 6. This Bylaw may be cited for all purposes as "110 PG Pulpmill Road Closure Bylaw No. 8508, 2013".

READ A FIRST TIME THIS THE 23rd DAY OF SEPTEMBER, 2013.

READ A SECOND TIME THIS THE 23rd DAY OF SEPTEMBER, 2013.

First Two readings passed by a unanimous decision of Members of City Council present and eligible to vote.

READ A THIRD TIME THIS THE 7th DAY OF OCTOBER , 2013.

Third Reading passed by a unanimous decision of Members of City Council present and eligible to vote.


Certified correct as passed Third Reading, this the 10th day of OCTOBER , 2013.


 Deputy CORPORATE OFFICER OF
 THE CITY OF PRINCE GEORGE

APPROVED BY THE MINISTER OF TRANSPORTATION AND INFRASTRUCTURE PURSUANT TO THE PROVISIONS OF SECTION 41(3) OF THE COMMUNITY CHARTER THIS THE 16th DAY OF OCTOBER , 2013.


 for MINISTER OF TRANSPORTATION
 AND INFRASTRUCTURE

ADOPTED THIS THE 4th DAY OF NOVEMBER , 2013, BY A UNANIMOUS DECISION OF ALL MEMBERS OF CITY COUNCIL PRESENT AND ELIGIBLE TO VOTE.


 A/MAYOR


 CORPORATE OFFICER

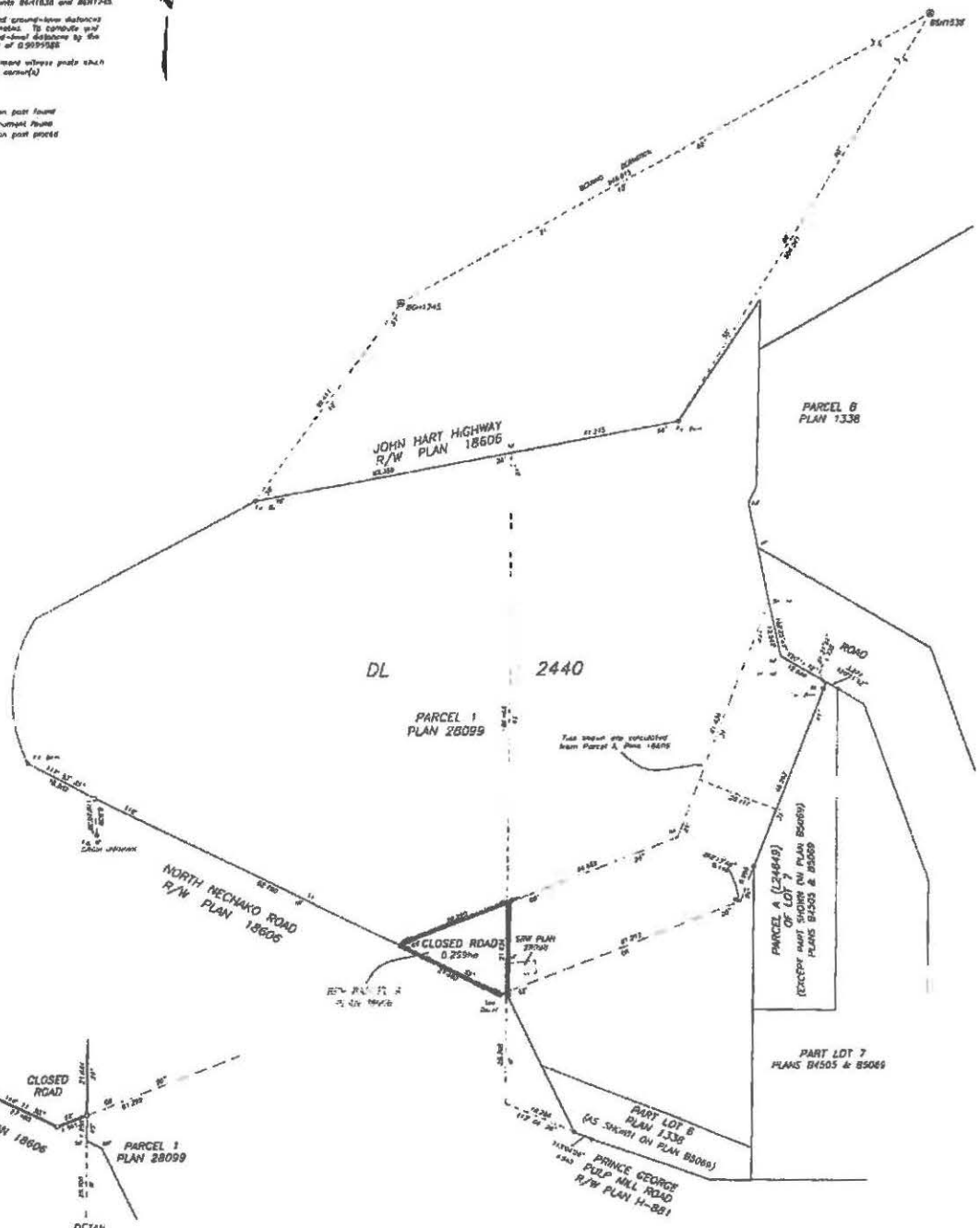
REFERENCE PLAN TO ACCOMPANY
 BY-LAW No. **JTY OF PRINCE GEORGE**
TO CLOSE PART OF ROAD DEDICATED BY PLAN 18606,
DISTRICT LOT 2440, CARIBOO DISTRICT.
 Pursuant to Section 120 of the Land Title Act and Section 40 of the
 Community Charter.

BCGS 930097

The intended part of the plan is 860mm in
 width by 660mm in height (80 mm) when plotted
 at a scale of 1:500.

LEGEND
 Integrated Survey Area Pa 20, City of Prince
 George, B.C. (2005)
 Grid bearings are derived from observations between
 geodetic control monuments 8641858 and 8611245.
 This plan shows horizontal ground-line distances
 except where otherwise noted. To compute grid
 distances, multiply ground-line distances by the
 average cosinued factor of 0.9999588.
 This plan shows some or most witness posts which
 are not set on the true corner(s).

LEGEND
 * denotes abandoned iron post found
 ⊗ denotes original monument found
 †† denotes staked iron post placed



FOCUS
 2010113502-000001 2011

The plan was within the Regional District
 of Fraser-Fort George.

The field survey represented by this plan was completed
 on the 29th day of June, 2011.
 Tim Wilkinson, B.C.L.S. 858