

**CITY OF PRINCE GEORGE**  
**BYLAW NO. 8604**

**A Bylaw of the City of Prince George to permanently close a portion of Edmonton Street from 13<sup>th</sup> to 15<sup>th</sup> Avenues adjacent to University Hospital of Northern British Columbia and to remove its highway dedication for the purpose of providing additional hospital patron parking.**

**WHEREAS** pursuant to Section 40 of the *Community Charter* S.B.C. 2003, C.26, Council may by bylaw close a portion of a highway to traffic and remove its highway dedication ;

**AND WHEREAS**, in accordance with section 40 of the *Community Charter*, notice of intention to adopt this bylaw has been delivered, posted and published, and an opportunity has been provided for persons who consider they are affected by this bylaw to make representations to Council;

**NOW THEREFORE** the Council of the City of Prince George, in open meeting assembled, **ENACTS AS FOLLOWS:**

1. That the portion of highway dedicated on Plan 1268, District Lot 343, Cariboo District, and Plan BCP33643, District Lot 343, Cariboo District, as shown outlined in bold black on the Reference Plan attached hereto as Appendix "A" and forming part of this Bylaw, is closed to traffic.
2. That the dedication of the portion of highway dedicated by Plan 1268, District Lot 343, Cariboo District, and Plan BCP33643, District Lot 343, Cariboo District, as shown outlined in bold black on the Reference Plan attached hereto as Appendix "A" and forming part of this Bylaw, is removed.
3. The Mayor and Corporate Officer are hereby empowered to do all things necessary to give effect to this Bylaw.
4. This Bylaw shall come into full force and take effect upon its adoption and shall be filed with the Registrar of the applicable Land Title Office.
5. This Bylaw may be cited for all purposes as "Edmonton Street Road Closure Bylaw No. 8604, 2016".

READ A FIRST TIME THIS            **13<sup>th</sup>**            DAY OF            **JUNE**            , **2016.**

READ A SECOND TIME THIS        **13<sup>th</sup>**            DAY OF            **JUNE**            , **2016.**

First two readings passed by a    **UNANIMOUS**    decision of Members of City Council  
present and eligible to vote.

READ A THIRD TIME THIS 11<sup>th</sup> DAY OF JULY, 2016.

Third reading passed by a UNANIMOUS decision of Members of City Council present and eligible to vote.

Certified correct as passed third reading, this 12<sup>th</sup> day of JULY, 2016.

*W. J. J.*  
CORPORATE OFFICER OF  
THE CITY OF PRINCE GEORGE

APPROVED BY THE MINISTER OF TRANSPORTATION AND INFRASTRUCTURE PURSUANT TO THE PROVISIONS OF SECTION 41(3) OF THE COMMUNITY CHARTER THIS 19<sup>th</sup> DAY OF July, 2016.

*Kelli Holman*  
for MINISTER OF TRANSPORTATION  
AND INFRASTRUCTURE

ADOPTED THIS 25<sup>th</sup> DAY OF JULY, 2016,  
BY A UNANIMOUS DECISION OF ALL MEMBERS OF CITY COUNCIL PRESENT AND ELIGIBLE TO VOTE.

*[Signature]*  
MAYOR  
*W. J. J.*  
CORPORATE OFFICER

**REFERENCE PLAN TO ACCOMPANY BYLAW No. 8604 (CITY OF PRINCE GEORGE) TO CLOSE A PORTION OF EDMONTON STREET DEDICATED ON PLAN 1268, AND PLAN BCP33643, BOTH IN DISTRICT LOT 343, CARIBOO DISTRICT.**

PURSUANT TO SECTION 120 OF THE LAND TITLE ACT AND SECTION 40 OF THE COMMUNITY CHARTER.

INTEGRATED SURVEY AREA No. 39 PRINCE GEORGE, BC  
BCGS 99G.097



THE INTENDED PLOT SIZE OF THIS PLAN IS 500 mm IN WIDTH BY 432 mm IN HEIGHT (C SIZE) WHEN PLOTTED AT A SCALE OF 1:1000.

ALL DISTANCES ARE IN METRES AND DECIMALS THEREOF.

GRID BEARINGS ARE DERIVED FROM OBSERVATIONS BETWEEN GEODETIC CONTROL MONUMENTS 85H1066 AND 85H1068.

THE UTM COORDINATES AND ESTIMATED HORIZONTAL POSITIONAL ACCURACY ACHIEVED, HAVE BEEN DERIVED FROM MAGNETIC PUBLISHED INFORMATION AND ADJUSTED FOR GEODETIC CONTROL MONUMENTS 85H1105 AND 85H1068.

THIS PLAN SHOWS HORIZONTAL GROUND-LEVEL DISTANCES UNLESS OTHERWISE NOTED. THE VERTICAL DISTANCES FROM THE MEAN SEA LEVEL GROUND-LEVEL DISTANCES BY THE AVERAGE CORNER FACTOR OF 0.9999129 WHICH HAS BEEN DERIVED FROM CONTROL MONUMENTS 85H1105 AND 85H1068.

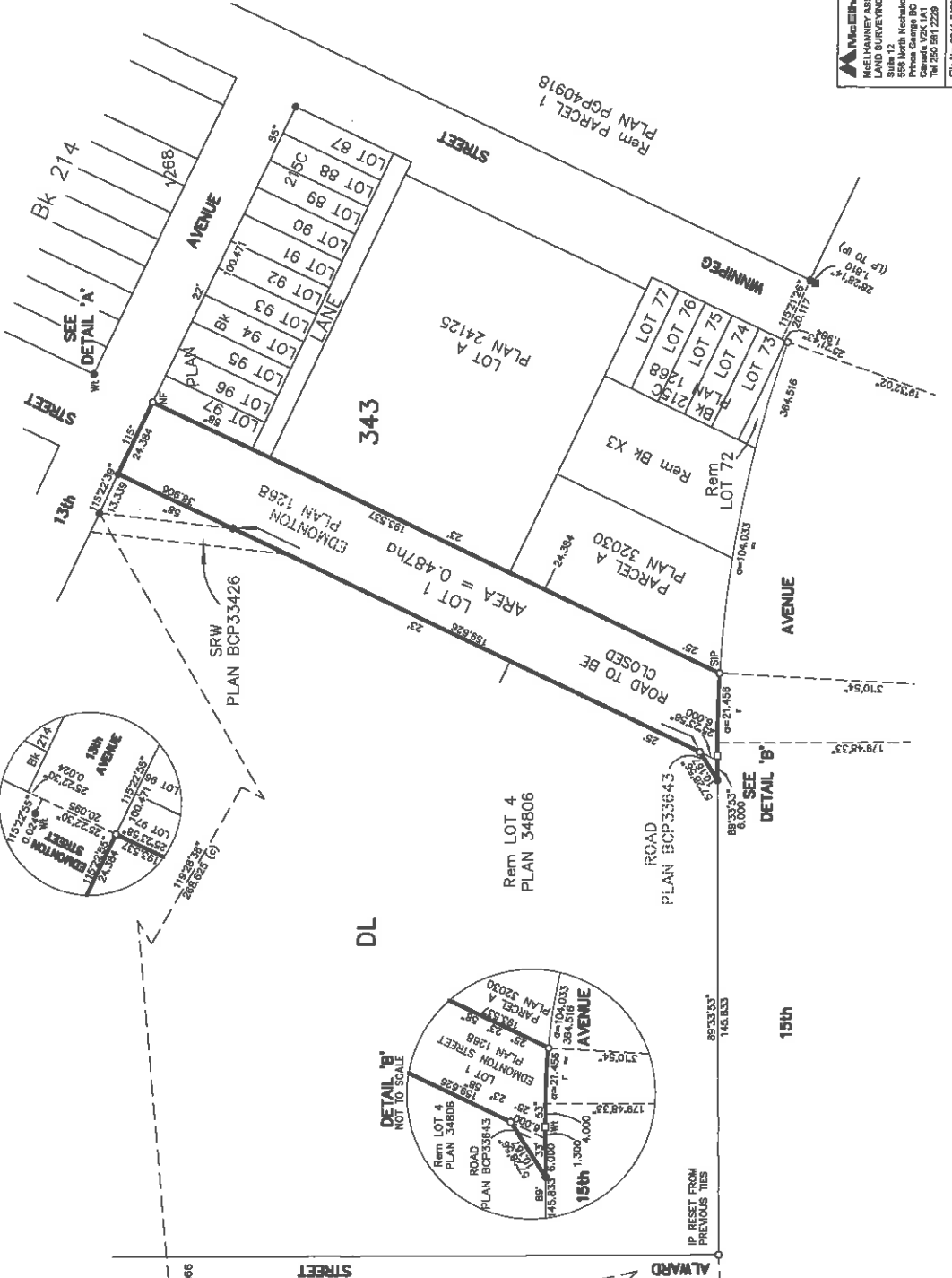
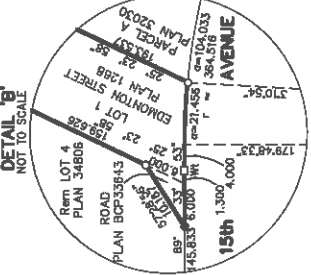
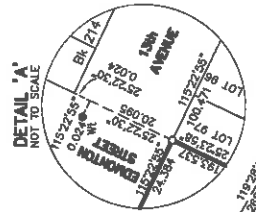
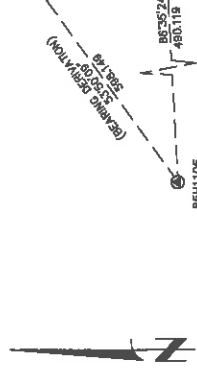
**LEGEND:**

- SYMBOLS FOUND PLACED
- CONTROL MONUMENT
- EXTENDED IRON POST
- LEAD PLUG
- SIP
- SHORT IRON POST

NOTE: THIS PLAN SHOWS ONE OR MORE WITNESS POSTS WHICH ARE NOT SET ON THE TRUE CORNERS.

NOTE: POINTS AND LINES HAVE BEEN ENLARGED FOR CLARITY.

| GEOREFERENCING POSITIONS                          |            |           |
|---|------------|-----------|
| UTM COORDINATES, ZONE 18, NAD83(CRS83) 4.0, B.C.1 |            |           |
| STATION   | NORTHING   | EASTING   |
| 85H1105   | 5975958.82 | 514894.84 |
| 85H1068   | 5979912.42 | 515047.51 |
|   |            | 0.05      |
|   |            | 0.05      |



**MacElhenny**  
MELHANNY ASSOCIATES  
LAND SURVEYING LTD.  
Suite 12, Nicholas Road  
Princess George BC  
Canada V2K 1A1  
TW 250 891 2229  
File No. 2341-2402-RC

THE FIELD SURVEY REPRESENTED BY THIS PLAN WAS COMPLETED ON THE 20th DAY OF MAY, 2019  
DARREN KENT, BOLS BKA

THIS PLAN LIES WITHIN THE REGIONAL DISTRICT OF FRASER-FORT GEORGE