

**CITY OF PRINCE GEORGE**  
**BYLAW NO. 9069, 2019**

**A Bylaw of the City of Prince George to permanently close a portion of road located near 1288 PG Pulpmill Road to remove its road dedication for the purpose of future disposal of the lands.**

**WHEREAS** the Council of the City of Prince George deems it desirable that an approximate 0.419 hectares of road dedicated on Plan 9233, District Lot 823, Cariboo District as shown on Reference Plan EPP97319, be closed to traffic, and that the road dedication thereof be removed;

**AND WHEREAS**, in accordance with section 40 of the *Community Charter*, notice of intention to adopt this bylaw has been delivered, posted and published, and an opportunity has been provided for persons who consider they are affected by this bylaw to make representations to Council;

**NOW THEREFORE** the Council of the City of Prince George, in open meeting assembled, **ENACTS AS FOLLOWS:**

1. That the portion of road shown dedicated on Plan 9233, District Lot 823, Cariboo District, as shown outlined in bold black on Reference Plan EPP97319, attached hereto as Appendix "A" and forming part of this Bylaw, is closed to traffic.
2. That the dedication of the portion of road dedicated by Plan 9233, District Lot 823, Cariboo District, as shown outlined in bold black on Reference Plan EPP97319, attached hereto as Appendix "A" and forming part of this Bylaw, is removed.
3. The Mayor and Corporate Officer are hereby empowered to do all things necessary to give effect to this Bylaw.
4. This Bylaw shall come into full force and take effect upon its adoption and shall be filed with the Registrar of the applicable Land Title Office.
5. This Bylaw may be cited for all purposes as "City of Prince George 1288 PG Pulpmill Road Closure Bylaw No. 9069, 2019".

READ A FIRST TIME THIS                      **23<sup>RD</sup>**                      DAY OF                      **OCTOBER**                      , 2019.


READ A SECOND TIME THIS                      **23<sup>RD</sup>**                      DAY OF                      **OCTOBER**                      , 2019.


First two readings passed by a                      **UNANIMOUS**                      decision of Members of City Council  
present and eligible to vote.

READ A THIRD TIME THIS **18<sup>TH</sup>** DAY OF **NOVEMBER**, 2019.

Third reading passed by a **UNANIMOUS** decision of Members of City Council present and eligible to vote.

ADOPTED THIS **4<sup>TH</sup>** DAY OF **DECEMBER**, 2019, BY A **UNANIMOUS** DECISION OF ALL MEMBERS OF CITY COUNCIL PRESENT AND ELIGIBLE TO VOTE.

  
MAYOR

  
CORPORATE OFFICER

**Reference Plan to Accompany  
By-law No. 9069 (City of Prince  
George) to close a portion of Road  
shown dedicated on Plan 9233,  
District Lot 823, Cariboo District.**

Pursuant to Section 120 of the Land Title Act and Section 40 of the Community Charter.  
Integrated survey area No. 39 Prince George, BC,  
NAD83 (CSRS) 4.0.0.BC.1  
BCGS 93G.097



The intended plot size of this plan is 432mm in width by 559mm in height (C size) when plotted at a scale of 1:750.

All distances are in metres and decimals thereof.

Grid bearings are derived from observations between geodetic control monuments 331272 and 167767.

The UTM coordinates and estimated absolute accuracy achieved are derived from mascof published coordinates and standard deviations for geodetic control monuments 331272 and 167767.

This plan shows horizontal ground-level distances unless otherwise specified. To compute grid distances, multiply ground-level distances by the average combined factor of 0.9995164 which has been derived from control monument 331272.

**Notes:**

This plan shows one or more witness posts which are not set on the true corner(s).

Some posts are exaggerated for clarity.

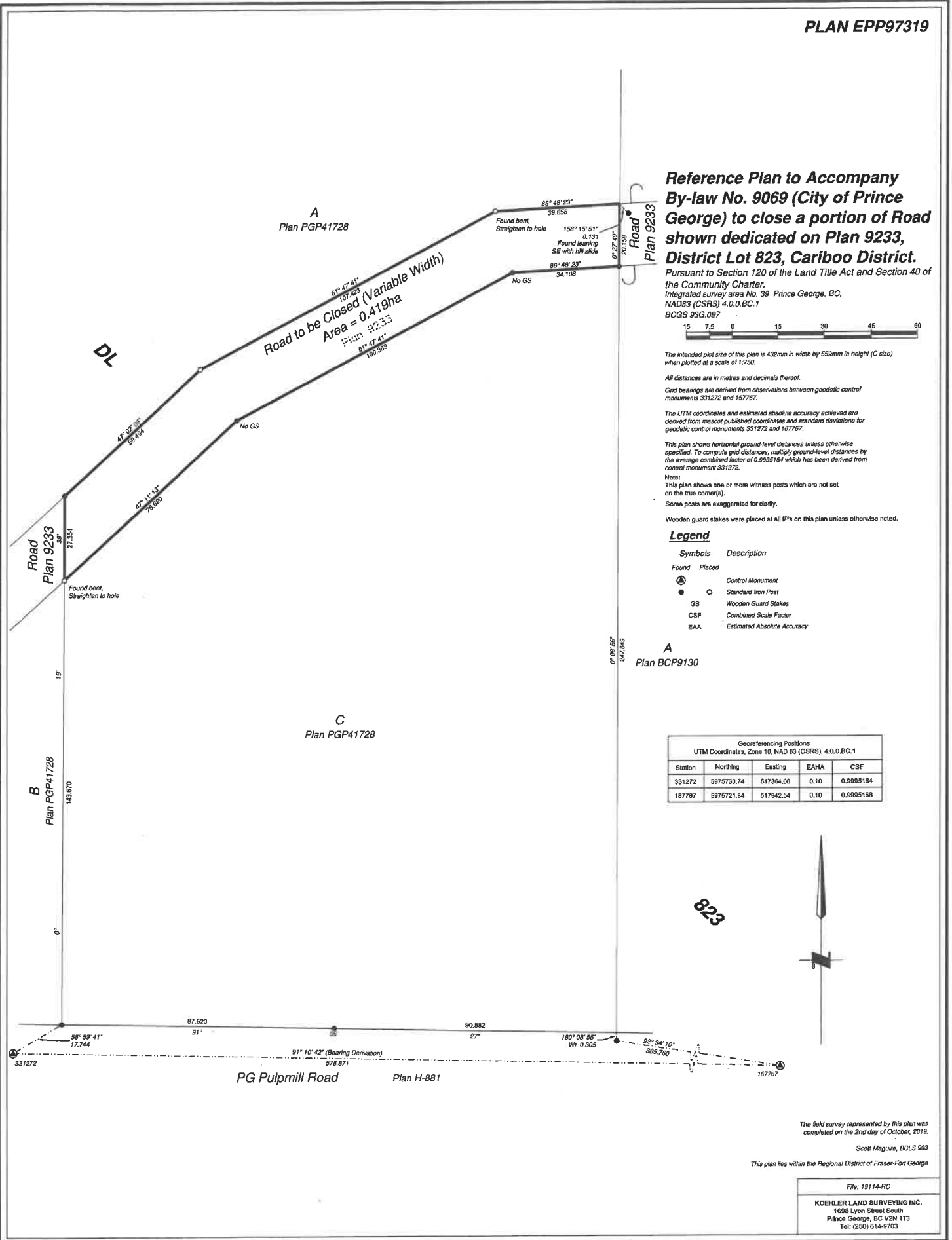
Wooden guard stakes were placed at all IP's on this plan unless otherwise noted.

**Legend**

Symbols	Description
Found	Placed
⊙	Control Monument
●	Standard Iron Post
GS	Wooden Guard Stakes
CSF	Combined Scale Factor
EAA	Estimated Absolute Accuracy

A  
Plan BCP9130

Georeferencing Positions UTM Coordinates, Zone 10, NAD 83 (CSRS), 4.0.0.BC.1				
Station	Northing	Easting	EAHA	CSF
331272	5975733.74	617364.08	0.10	0.9995164
167767	5975721.84	617942.54	0.10	0.9995168



The field survey represented by this plan was completed on the 2nd day of October, 2019.

Scott Maguire, BCLS 903

This plan lies within the Regional District of Fraser-Fort George

File: 19114-FC

KOEHLER LAND SURVEYING INC.  
1638 Lynn Street South  
Prince George, BC V2N 1T3  
Tel: (250) 614-9703