

CITY OF PRINCE GEORGE
BYLAW NO. 8640

A City of Prince George Bylaw to close a portion of dedicated highway and to remove its highway dedication.

WHEREAS, pursuant to Section 40 of the *Community Charter* S.B.C. 2003, c. 26, Council may by bylaw close a portion of a highway to traffic and remove highway dedication;

AND WHEREAS, in accordance with section 40 of the *Community Charter*, notice of intention to adopt this bylaw has been delivered, posted and published, and an opportunity has been provided for persons who consider they are affected by the Bylaw to make representation to Council;

NOW THEREFORE the Council of the City of Prince George, in open meeting assembled, **ENACTS AS FOLLOWS:**

1. That the portion of highway shown outlined in bold black on the reduced copy of the plan titled "Reference Plan to accompany City of Prince George Bylaw No. 8640, to Close Part of Road Dedicated on Plan EPP18682, District Lot 8180, Cariboo District, Except Plans B3608, H700, H735, 7274, 22207, PGP43039, BCP10188, BCP28701, EPP18682, EPP18683, EPP18684 and EPP28636, Cariboo District", referred to as Appendix "A", attached to and forming part of this bylaw, is hereby closed to traffic.
2. That the highway dedication of the portion of highway shown outlined in bold black on the reduced copy of the plan titled "Reference Plan to accompany City of Prince George Bylaw No. 8640, to Close Part of Road Dedicated on Plan EPP18682, District Lot 8180, Cariboo District, Except Plans B3608, H700, H735, 7274, 22207, PGP43039, BCP10188, BCP28701, EPP18682, EPP18683, EPP18684 and EPP28636, Cariboo District", referred to as Appendix "A", attached to and forming part of this bylaw, is hereby removed.
3. That prior to adoption, notice of intention to adopt this bylaw shall be published once a week for two consecutive weeks in a newspaper circulating in the municipality.
4. That the Mayor and Corporate Officer are hereby empowered to do all things necessary to give effect to this bylaw.
5. This bylaw shall come into full force and take effect upon its adoption and shall be filed with the Registrar of the applicable Land Title Office.
6. This Bylaw may be cited for all purposes as "Recreation Place North Road Closure Bylaw No. 8640, 2015".

READ A FIRST TIME THIS 2nd DAY OF March , 2015.

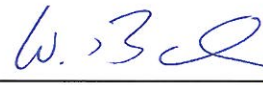
READ A SECOND TIME THIS 2nd DAY OF March , 2015.

First Two readings passed by a unanimous decision of Members of City Council present and eligible to vote.

READ A THIRD TIME THIS 16th DAY OF March , 2015.

Third Reading passed by a unanimous decision of Members of City Council present and eligible to vote.

Certified correct as passed Third Reading, this 17th day of March , 2015.



CORPORATE OFFICER OF
THE CITY OF PRINCE GEORGE

APPROVED BY THE MINISTER OF TRANSPORTATION AND INFRASTRUCTURE PURSUANT TO THE PROVISIONS OF SECTION 41(3) OF THE COMMUNITY CHARTER THIS THE 2nd DAY OF April , 2015.

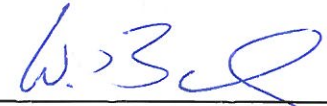


for MINISTER OF TRANSPORTATION
AND INFRASTRUCTURE

ADOPTED THIS 13th DAY OF APRIL , 2015,
BY A unanimous DECISION OF ALL MEMBERS OF CITY COUNCIL PRESENT AND ELIGIBLE TO VOTE.



MAYOR



CORPORATE OFFICER

REFERENCE PLAN TO ACCOMPANY CITY OF PRINCE GEORGE BYLAW NO. 8640, TO CLOSE PART OF ROAD DEDICATED ON PLAN EPP18682, DISTRICT LOT 8180, CARIBOO DISTRICT, EXCEPT PLANS B3608, H700, H735, 7274, 22207, PGP43039, BCP10188, BCP28701, EPP18682, EPP18683, EPP18684 AND EPP28636, CARIBOO DISTRICT.

PLAN EPP_____

PURSUANT TO SECTION 120 OF THE LAND TITLE ACT AND SECTION 40 OF THE COMMUNITY CHARTER.

BCGS 93G.087

THIS PLAN LIES WITHIN INTEGRATED SURVEY AREA No. 39, PRINCE GEORGE, NAD83 (CSRS)

THE INTENDED PLOT SIZE OF THIS PLAN IS 432mm IN WIDTH BY 560mm IN HEIGHT (C SIZE) WHEN PLOTTED AT A SCALE OF 1:1250



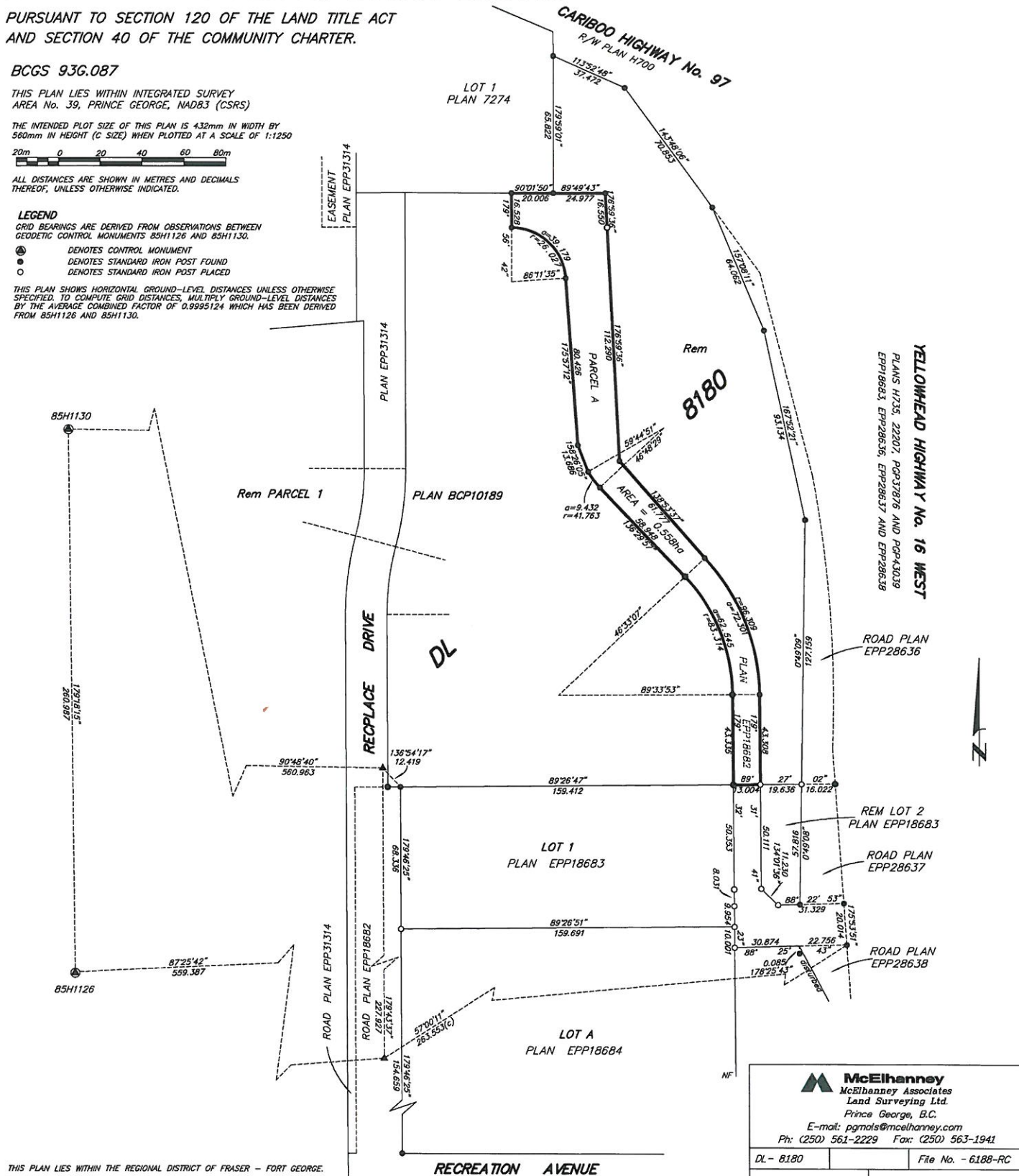
ALL DISTANCES ARE SHOWN IN METRES AND DECIMALS THEREOF, UNLESS OTHERWISE INDICATED.

LEGEND

GRID BEARINGS ARE DERIVED FROM OBSERVATIONS BETWEEN GEODETIC CONTROL MONUMENTS 85H1126 AND 85H1130.

- ⊙ DENOTES CONTROL MONUMENT
- DENOTES STANDARD IRON POST FOUND
- DENOTES STANDARD IRON POST PLACED

THIS PLAN SHOWS HORIZONTAL GROUND-LEVEL DISTANCES UNLESS OTHERWISE SPECIFIED. TO COMPUTE GRID DISTANCES, MULTIPLY GROUND-LEVEL DISTANCES BY THE AVERAGE COMBINED FACTOR OF 0.9995124 WHICH HAS BEEN DERIVED FROM 85H1126 AND 85H1130.



THIS PLAN LIES WITHIN THE REGIONAL DISTRICT OF FRASER - FORT GEORGE.

McElhanney
 McElhanney Associates
 Land Surveying Ltd.
 Prince George, B.C.
 E-mail: pgm@mcElhanney.com
 Ph: (250) 561-2229 Fax: (250) 563-1941

DL - 8180	File No. - 6188-RC
-----------	--------------------