

CITY OF PRINCE GEORGE
BYLAW NO. 9039, 2019

A Bylaw of the City of Prince George to permanently close a portion of road located near 701 North Nechako Road to remove its road dedication for the purpose of future disposal of the lands.

WHEREAS the Council of the City of Prince George deems it desirable that an approximate 0.0932 hectares of road dedicated on Plan 1454, District Lot 3050 and Plan 12288, District Lot 1574, Cariboo District, as shown on Reference Plan EPP92134, be closed to traffic, and that the highway dedication thereof be removed;

AND WHEREAS, in accordance with section 40 of the *Community Charter*, notice of intention to adopt this bylaw has been delivered, posted and published, and an opportunity has been provided for persons who consider they are affected by this bylaw to make representations to Council;

NOW THEREFORE the Council of the City of Prince George, in open meeting assembled, **ENACTS AS FOLLOWS:**

1. That the portion of road dedicated on Plan 1454, District Lot 3050 and Plan 12288, District Lot 1574, Cariboo District, as shown outlined in bold black on Reference Plan EPP92134, attached hereto as Appendix "A" and forming part of this Bylaw, is closed to traffic.
2. That the dedication of the portion of road dedicated by Plan 1454, District Lot 3050 and Plan 12288, District Lot 1574, Cariboo District, as shown outlined in bold black on Reference Plan EPP92134, attached hereto as Appendix "A" and forming part of this Bylaw, is removed.
3. The Mayor and Corporate Officer are hereby empowered to do all things necessary to give effect to this Bylaw.
4. This Bylaw shall come into full force and take effect upon its adoption and shall be filed with the Registrar of the applicable Land Title Office.
5. This Bylaw may be cited for all purposes as "City of Prince George Preston Road Closure Bylaw No. 9039, 2019".

READ A FIRST TIME THIS 23RD DAY OF OCTOBER , 2019.

READ A SECOND TIME THIS 23RD DAY OF OCTOBER , 2019.

First two readings passed by a UNANIMOUS decision of Members of City Council present and eligible to vote.

READ A THIRD TIME THIS 18TH DAY OF NOVEMBER , 2019.

Third reading passed by a UNANIMOUS decision of Members of City Council present and eligible to vote.

Certified correct as passed third reading this 19TH day of NOVEMBER , 2019.


CORPORATE OFFICER OF
THE CITY OF PRINCE GEORGE

APPROVED BY THE MINISTER OF TRANSPORTATION AND INFRASTRUCTURE PURSUANT TO THE PROVISIONS OF SECTION 41(3) OF THE COMMUNITY CHARTER.

THIS 12 DAY OF DECEMBER 2019.


for MINISTER OF TRANSPORTATION
AND INFRASTRUCTURE

ADOPTED THIS 20TH DAY OF JANUARY 2020 , 2019, BY A

UNANIMOUS DECISION OF ALL MEMBERS OF CITY COUNCIL PRESENT AND ELIGIBLE TO VOTE.


MAYOR


CORPORATE OFFICER

**Reference Plan to accompany
By-law No. 9039 Closing portions
of Road shown dedicated on
Plan 1454, District Lot 3050,
and Plan 12288, District Lot 1574,
Cariboo District.**

Pursuant to Section 120 of the Land Title Act and Section 40 of the Community Charter.

BGS 93G.097

Integrated survey area No. 39 Prince George, BC, NAD83 (CSRS) 4.0.D.BC.1



The intended plot size of this plan is 432mm in width by 559mm in height (C size) when plotted at a scale of 1:1000.

All distances are in metres and decimals thereof.

Grid bearings are derived from Plan EPP28438

The UTM coordinates and estimated horizontal positional accuracy are derived from Plan EPP28438.

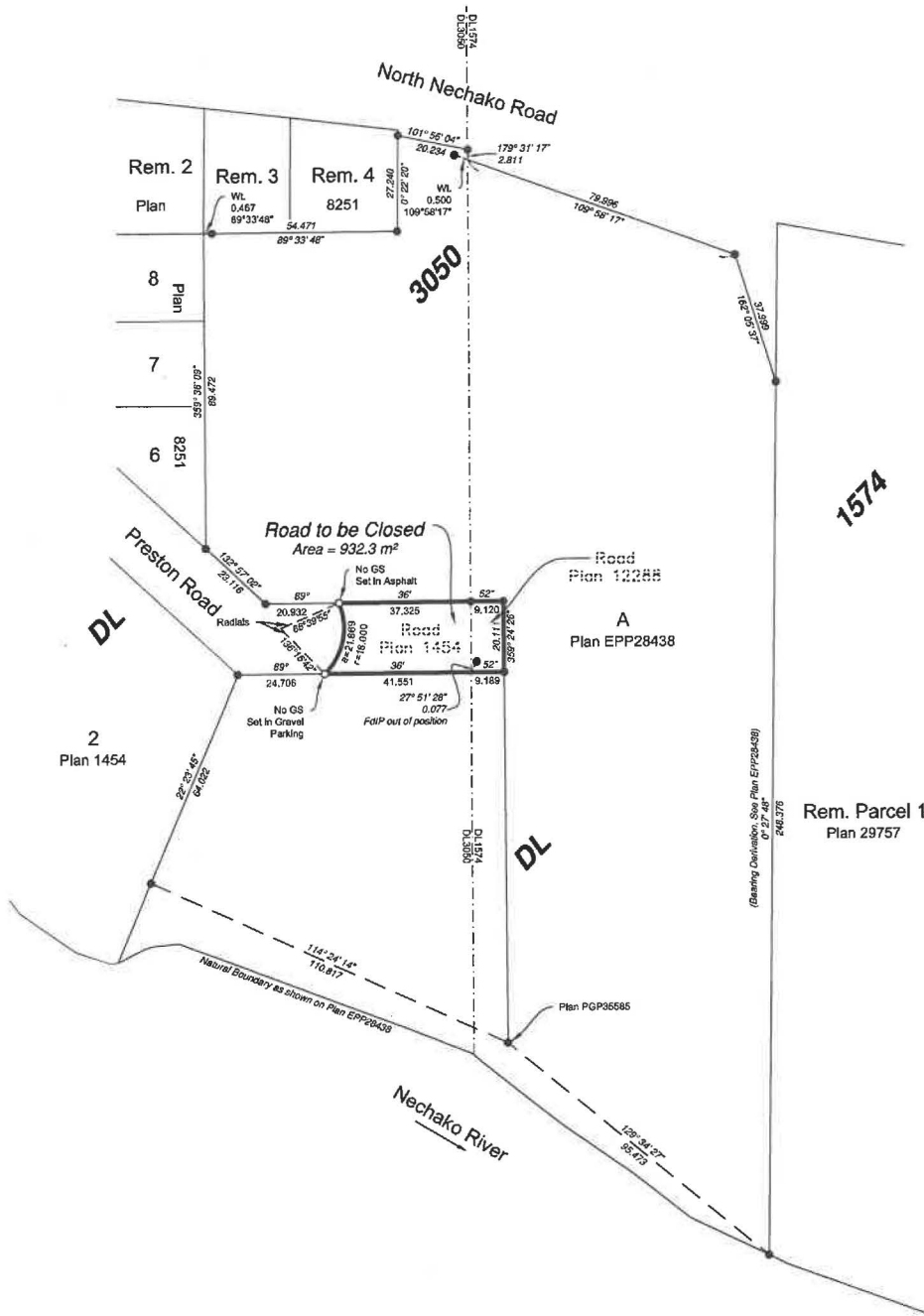
This plan shows horizontal ground-level distances, unless otherwise specified. To compute grid distances, multiply ground-level distances by the average combined factor of 0.999997. The average combined factor has been determined based on Plan EPP28438.

Note:
This plan shows one or more witness posts which are not set on the true corner(s).

Some posts are exaggerated for clarity.

Legend

Symbols	Description
Found	Placed
●	○ Standard Iron Post
GS	Wooden Guard Stake



The field survey represented by this plan was completed on the 4th day of June, 2019.

Scott Maguire, BCLS 903

This plan lies within the Regional District of Fraser-Fort George

File: 19033-RC
KOEHLER LAND SURVEYING INC.
 1688 Lyon Street South
 Prince George, BC V2N 1T3
 Tel: (250) 614-9703