

**CITY OF PRINCE GEORGE**  
**BYLAW NO. 9099, 2020**

A Bylaw of the City of Prince George to permanently close a portion of road adjacent to 1912 20<sup>th</sup> Avenue and to remove its road dedication for the purpose of future disposal of the lands.

**WHEREAS** the Council of the City of Prince George deems it desirable that an approximate 113.3 m<sup>2</sup> (square metres) of road dedicated on Plan 1268 as shown on Reference Plan EPP104768 adjacent to the properties legally described as Parcel 1, Plan BCP24383, Cariboo District and Lots 3, 4, 17, 18, all of Block 329, Plan 1268, Cariboo District, be closed to traffic, and that the road dedication thereof be removed;

**AND WHEREAS**, in accordance with section 40 of the *Community Charter*, notice of intention to adopt this bylaw has been delivered, posted and published, and an opportunity has been provided for persons who consider they are affected by this bylaw to make representations to Council;

**NOW THEREFORE** the Council of the City of Prince George, in open meeting assembled, **ENACTS AS FOLLOWS:**

1. That the portion of road dedicated on Plan 1268, adjacent to the properties legally described as Parcel 1, Plan BCP24383, Cariboo District and Lots 3, 4, 17, 18, all of Block 329, Plan 1268, Cariboo District as shown outlined in bold black on Reference Plan EPP104768, attached hereto as Appendix "A" and forming part of this Bylaw, is closed to traffic.
2. That the portion of road dedicated on Plan 1268, adjacent to the properties legally described as Parcel 1, Plan BCP24383, Cariboo District and Lots 3, 4, 17, 18, all of Block 329, Plan 1268, Cariboo District, as shown outlined in bold black on Reference Plan EPP104768, attached hereto as Appendix "A" and forming part of this Bylaw, is removed.
3. The Mayor and Corporate Officer are hereby empowered to do all things necessary to give effect to this Bylaw.
4. This Bylaw shall come into full force and take effect upon its adoption and shall be filed with the Registrar of the applicable Land Title Office.
5. This Bylaw may be cited for all purposes as "City of Prince George 1912 20<sup>th</sup> Avenue Road Closure Bylaw No. 9099, 2020".

READ A FIRST TIME THIS                    5<sup>TH</sup>                    DAY OF                    OCTOBER                    , 2020.


READ A SECOND TIME THIS                    5<sup>TH</sup>                    DAY OF                    OCTOBER                    , 2020.

First two readings passed by a **UNANIMOUS** decision of Members of City Council present and eligible to vote.

READ A THIRD TIME THIS **9<sup>TH</sup>** DAY OF **NOVEMBER**, 2020.

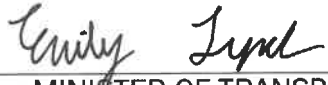
Third reading passed by a **UNANIMOUS** decision of Members of City Council present and eligible to vote.

Certified correct as passed third reading this **10<sup>TH</sup>** day of **NOVEMBER**, 2020.

  
D. McConnelley  
CORPORATE OFFICER OF  
THE CITY OF PRINCE GEORGE

APPROVED BY THE MINISTER OF TRANSPORTATION AND INFRASTRUCTURE PURSUANT TO THE PROVISIONS OF SECTION 41(3) OF THE COMMUNITY CHARTER.

THIS **26** DAY OF **November** 2020.

  
Emily Lynd  
for MINISTER OF TRANSPORTATION  
AND INFRASTRUCTURE

ADOPTED THIS **4<sup>TH</sup>** DAY OF **OCTOBER**, 20**20**<sup>21</sup>,  
BY A **UNANIMOUS** DECISION OF ALL MEMBERS OF CITY COUNCIL PRESENT AND ELIGIBLE TO VOTE.

  
MAYOR

  
D. McConnelley  
CORPORATE OFFICER

**Reference Plan to Accompany  
By-law No. 9099 Closing a portion  
of Lane shown dedicated on Plan  
1268, District Lot 343, Cariboo  
District.**

Pursuant to Section 120 of the Land Title Act and  
Section 40 of the Community Charter.

Integrated survey area No. 39 Prince George, BC,  
NAD83 (CSRS) 4.0.0.BC.1

BCGS 93G.097



The intended plot size of this plan is 432mm in width by 559mm in height (C size)  
when plotted at a scale of 1:500.

All distances are in metres and decimals thereof.

Grid bearings are derived from observations between geodetic control  
monuments 515379 (85H1331) and 995530 (85H1116) and are referred  
to the central meridian of UTM Zone 10 North (123° west longitude).

The UTM coordinates and estimated absolute accuracy achieved have  
been derived from MASCOT published coordinates and standard  
deviations for geodetic control monuments 515379 (85H1331) and  
995530 (85H1116).

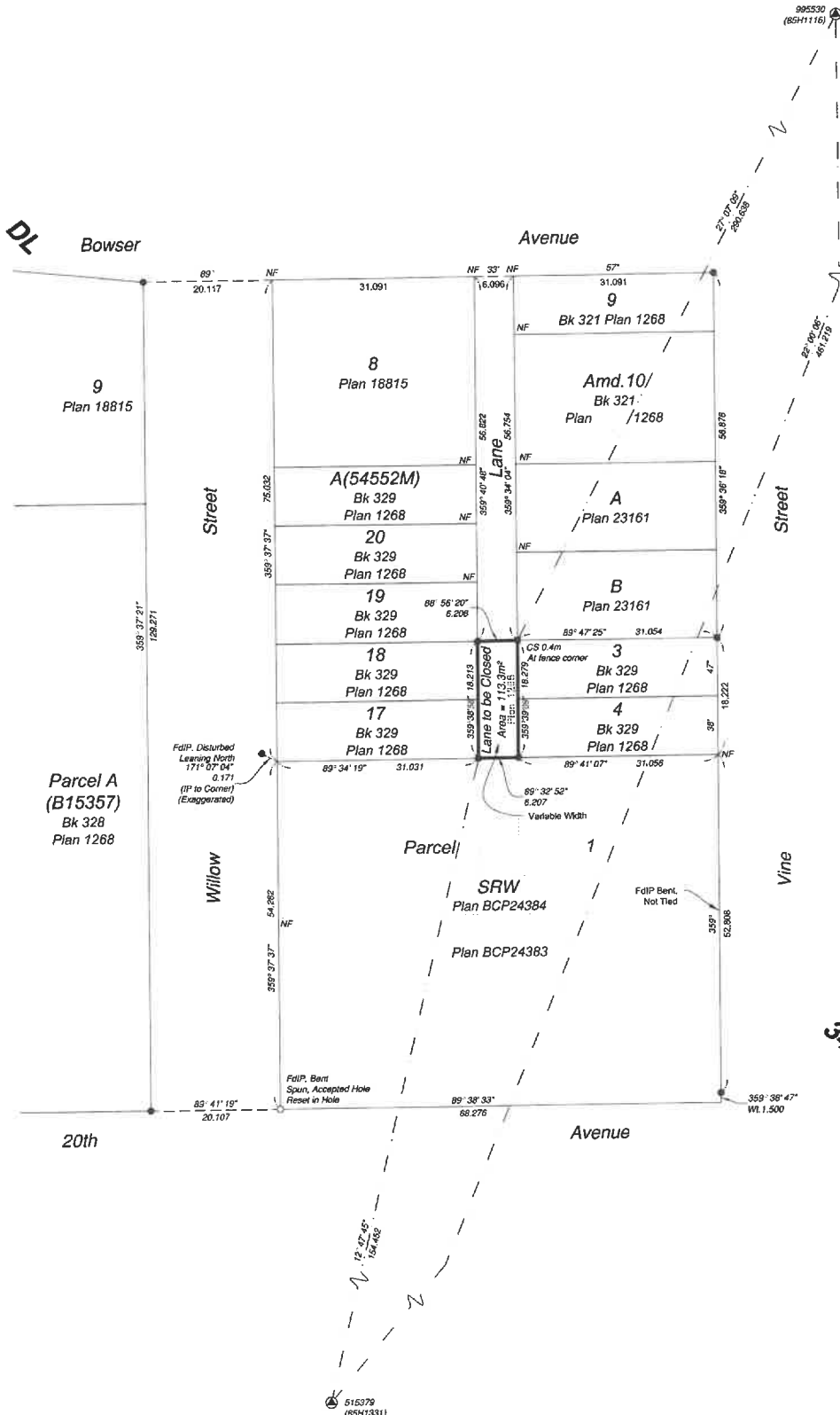
This plan shows horizontal ground-level distances unless otherwise  
specified. To compute grid distances, multiply ground-level distances by  
the average combined factor of 0.9995155 which has been derived from  
control monument 515379 (85H1331).

Note:  
This plan shows one or more witness posts which are not set  
on the true corner(s).  
Some posts are exaggerated for clarity.

**Legend**

Symbols	Description
Found	Placed
Control Monument	Control Monument
Standard Iron Post	Standard Iron Post
CSF	Combined Scale Factor
EAA	Estimated Absolute Accuracy
Bk	Block
CS	Countersunk
Amd.	Amended Lot

Georeferencing Positions				
UTM Coordinates, Zone 10, NAD 83 (CSRS), 4.0.0.BC.1				
Station	Northing	Easting	EAA	CSF
515379	5972939.86	515558.60	0.05	0.9995155
995530	5973367.28	515731.31	0.05	0.9995157



The field survey represented by this plan was  
completed on the 24th day of July, 2020.

Scott A. Maguire, BCLS 903

This plan lies within the Regional District of Fraser-Fort George

File: 20038-BC  
**KOHLER LAND SURVEYING INC.**  
 1699 Lyon Street South  
 Prince George, BC V2N 1T3  
 Tel: (250) 614-9703